



HEN1/2 Polyclonal Antibody

Catalog No	BYab-01772
Isotype	IgG
Reactivity	Human;Mouse
Applications	WB;IHC;IF;ELISA
Gene Name	HEN1/HEN2
Protein Name	Helix-loop-helix protein 1
Immunogen	The antiserum was produced against synthesized peptide derived from human HEN1/2. AA range:41-90
Specificity	HEN1/2 Polyclonal Antibody detects endogenous levels of HEN1/2 protein.
Formulation	Liquid in PBS containing 50% glycerol, 0.5% BSA and 0.02% sodium azide.
Source	Polyclonal, Rabbit,IgG
Purification	The antibody was affinity-purified from rabbit antiserum by affinity-chromatography using epitope-specific immunogen.
Dilution	WB: 1/500 - 1/2000. IHC: 1/100 - 1/300. ELISA: 1/10000.. IF 1:50-200
Concentration	1 mg/ml
Purity	≥90%
Storage Stability	-20°C/1 year
Synonyms	NHLH1; BHLHA35; HEN1; Helix-loop-helix protein 1; HEN-1; Class A basic helix-loop-helix protein 35; bHLHa35; Nescient helix loop helix 1; NSCL-1; NHLH2; BHLHA34; HEN2; KIAA0490; Helix-loop-helix protein 2; HEN-2; Class A basic helix-loop-he
Observed Band	19kD
Cell Pathway	Nucleus .
Tissue Specificity	Brain, Eye,
Function	function:May serve as DNA-binding protein and may be involved in the control of cell-type determination, possibly within the developing nervous system.,similarity:Contains 1 basic helix-loop-helix (bHLH) domain.,subunit:Efficient DNA binding requires dimerization with another bHLH protein.,
Background	The helix-loop-helix (HLH) proteins are a family of putative transcription factors, some of which have been shown to play an important role in growth and

Nanjing BYabscience technology Co.,Ltd



development of a wide variety of tissues and species. Four members of this family have been clearly implicated in tumorigenesis via their involvement in chromosomal translocations in lymphoid tumors: MYC (MIM 190080), LYL1 (MIM 151440), E2A (MIM 147141), and SCL (MIM 187040).[supplied by OMIM, Nov 2002],

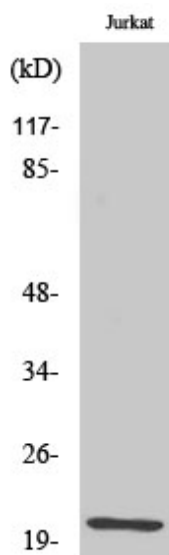
matters needing attention

Avoid repeated freezing and thawing!

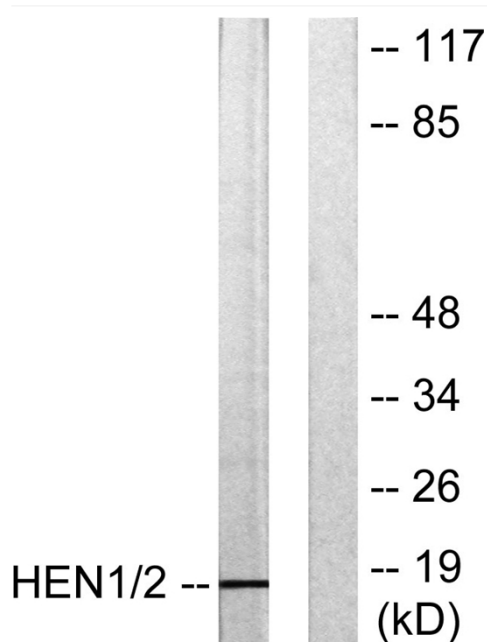
Usage suggestions

This product can be used in immunological reaction related experiments. For more information, please consult technical personnel.

Products Images

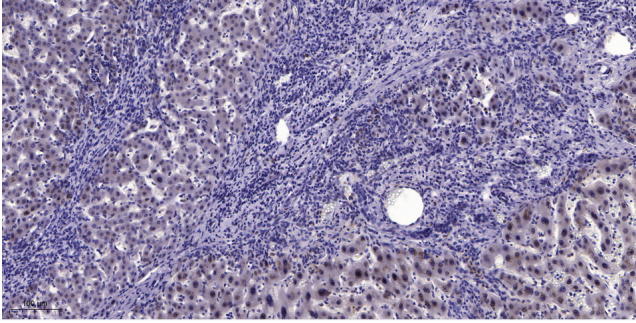


Western Blot analysis of various cells using HEN1/2 Polyclonal Antibody diluted at 1:1000 cells nucleus extracted by Minute TM Cytoplasmic and Nuclear Fractionation kit (SC-003, Invent biotech, MN, USA).



Western blot analysis of lysates from Jurkat cells, using HEN1/2 Antibody. The lane on the right is blocked with the synthesized peptide.

Nanjing BYabscience technology Co.,Ltd



Immunohistochemical analysis of paraffin-embedded human liver cancer. 1, Antibody was diluted at 1:200(4° overnight). 2, Tris-EDTA,pH9.0 was used for antigen retrieval. 3,Secondary antibody was diluted at 1:200(room temperature, 45min).