



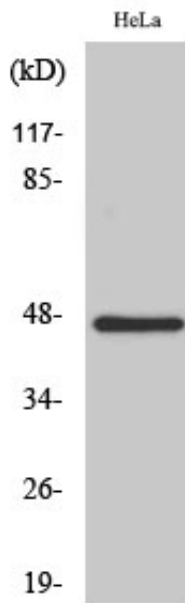
HSFX1 Polyclonal Antibody

Catalog No	BYab-01819
Isotype	IgG
Reactivity	Human;Rat;Mouse;
Applications	WB;ELISA
Gene Name	HSFX1
Protein Name	Heat shock transcription factor X-linked
Immunogen	The antiserum was produced against synthesized peptide derived from human LW-1. AA range:10-59
Specificity	HSFX1 Polyclonal Antibody detects endogenous levels of HSFX1 protein.
Formulation	Liquid in PBS containing 50% glycerol, 0.5% BSA and 0.02% sodium azide.
Source	Polyclonal, Rabbit,IgG
Purification	The antibody was affinity-purified from rabbit antiserum by affinity-chromatography using epitope-specific immunogen.
Dilution	Western Blot: 1/500 - 1/2000. ELISA: 1/10000. Not yet tested in other applications.
Concentration	1 mg/ml
Purity	≥90%
Storage Stability	-20°C/1 year
Synonyms	HSFX1; LW-1; HSFX2; Heat shock transcription factor; X-linked
Observed Band	47kD
Cell Pathway	Nucleus . Cytoplasm .
Tissue Specificity	Testis-specific.
Function	similarity:Belongs to the HSF family.,tissue specificity:Testis-specific.,
Background	similarity:Belongs to the HSF family.,tissue specificity:Testis-specific.,
matters needing attention	Avoid repeated freezing and thawing!
Usage suggestions	This product can be used in immunological reaction related experiments. For more information, please consult technical personnel.

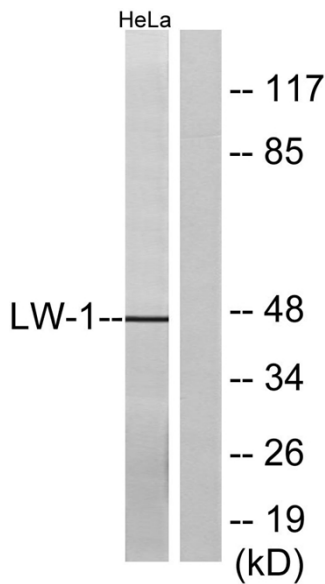
Nanjing BYabscience technology Co.,Ltd



Products Images



Western Blot analysis of various cells using HSFX1 Polyclonal Antibody



Western blot analysis of lysates from HeLa cells, using LW-1 Antibody. The lane on the right is blocked with the synthesized peptide.