



HuB/D Polyclonal Antibody

Catalog No	BYab-01820
Isotype	IgG
Reactivity	Human;Mouse;Rat
Applications	WB;IHC;IF;ELISA
Gene Name	ELAVL2/ELAVL4
Protein Name	ELAV-like protein 2/ELAV-like protein 4
Immunogen	The antiserum was produced against synthesized peptide derived from human ELAV2/4. AA range:61-110
Specificity	HuB/D Polyclonal Antibody detects endogenous levels of HuB/D protein.
Formulation	Liquid in PBS containing 50% glycerol, 0.5% BSA and 0.02% sodium azide.
Source	Polyclonal, Rabbit,IgG
Purification	The antibody was affinity-purified from rabbit antiserum by affinity-chromatography using epitope-specific immunogen.
Dilution	Western Blot: 1/500 - 1/2000. Immunohistochemistry: 1/100 - 1/300. Immunofluorescence: 1/200 - 1/1000. ELISA: 1/40000. Not yet tested in other applications.
Concentration	1 mg/ml
Purity	≥90%
Storage Stability	-20°C/1 year
Synonyms	ELAVL2; HUB; ELAV-like protein 2; ELAV-like neuronal protein 1; Hu-antigen B; HuB; Nervous system-specific RNA-binding protein Hel-N1; ELAVL4; HUD; PNEM; ELAV-like protein 4; Hu-antigen D; HuD; Paraneoplastic encephalomyelitis antigen HuD
Observed Band	40kD
Cell Pathway	nucleoplasm,
Tissue Specificity	Brain; neural-specific.
Function	function: Binds RNA. Seems to recognize a GAAA motif. Can bind to its own 3'-UTR, the FOS 3'-UTR and the ID 3'-UTR.,similarity: Belongs to the RRM elav family.,similarity: Contains 3 RRM (RNA recognition motif) domains.,tissue specificity: Brain; neural-specific.,

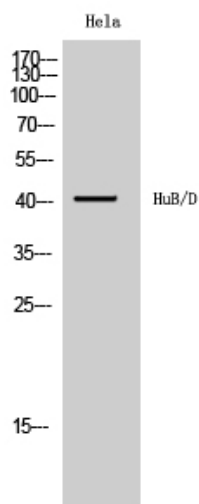
Nanjing BYabscience technology Co.,Ltd



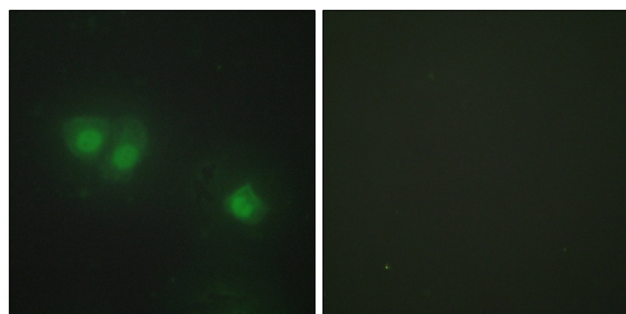
Background	ELAV like RNA binding protein 2(ELAVL2) Homo sapiens The protein encoded by this gene is a neural-specific RNA-binding protein that is known to bind to several 3' UTRs, including its own and also that of FOS and ID. The encoded protein may recognize a GAAA motif in the RNA. Three transcript variants encoding two different isoforms have been found for this gene. [provided by RefSeq, Jan 2010],
matters needing attention	Avoid repeated freezing and thawing!
Usage suggestions	This product can be used in immunological reaction related experiments. For more information, please consult technical personnel.



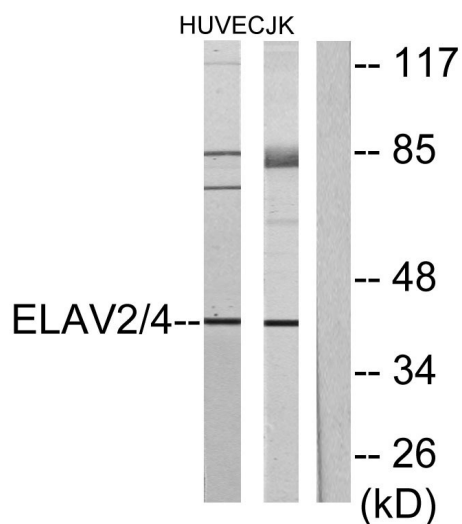
Products Images



Western Blot analysis of HeLa cells using HuB/D Polyclonal Antibody diluted at 1:1000



Immunofluorescence analysis of HepG2 cells, using ELAV2/4 Antibody. The picture on the right is blocked with the synthesized peptide.



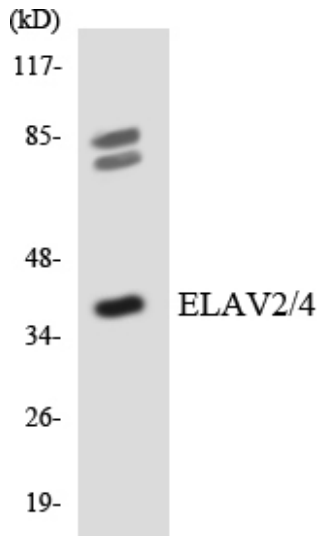
Western blot analysis of lysates from Jurkat and HUVEC cells, using ELAV2/4 Antibody. The lane on the right is blocked with the synthesized peptide.

Nanjing BYabs science technology Co.,Ltd

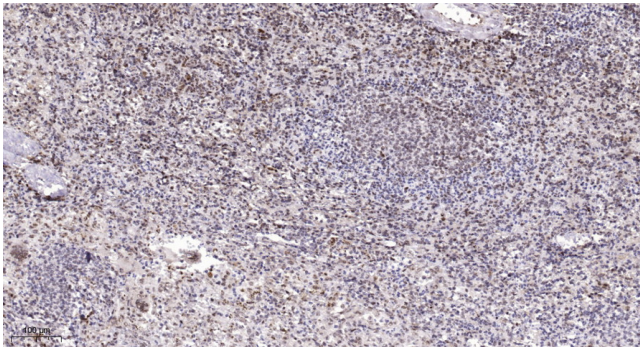
网址: www.njbybio.com

官方热线: 025-5229-8998

监督电话: 15950492658



Western blot analysis of the lysates from 293 cells using ELAV2/4 antibody.



Immunohistochemical analysis of paraffin-embedded human spleen. 1, Antibody was diluted at 1:200(4° overnight). 2, Tris-EDTA,pH9.0 was used for antigen retrieval. 3,Secondary antibody was diluted at 1:200(room temperature, 45min).