



LUC7L2 Polyclonal Antibody

Catalog No	BYab-01849
Isotype	IgG
Reactivity	Human;Mouse;Rat
Applications	WB;IHC;IF;ELISA
Gene Name	LUC7L2
Protein Name	Putative RNA-binding protein Luc7-like 2
Immunogen	The antiserum was produced against synthesized peptide derived from human LUC7L2. AA range:129-178
Specificity	LUC7L2 Polyclonal Antibody detects endogenous levels of LUC7L2 protein.
Formulation	Liquid in PBS containing 50% glycerol, 0.5% BSA and 0.02% sodium azide.
Source	Polyclonal, Rabbit,IgG
Purification	The antibody was affinity-purified from rabbit antiserum by affinity-chromatography using epitope-specific immunogen.
Dilution	WB: 1/500 - 1/2000. IHC: 1/100 - 1/300. ELISA: 1/40000.. IF 1:50-200
Concentration	1 mg/ml
Purity	≥90%
Storage Stability	-20°C/1 year
Synonyms	LUC7L2; CGI-59; CGI-74; Putative RNA-binding protein Luc7-like 2
Observed Band	47kD
Cell Pathway	Nucleus speckle . Nucleus, nucleoplasm . Colocalizes with SCNM1 and SNRNP70 in nuclear speckles. .
Tissue Specificity	Brain,Epithelium,Skin,Uterus,
Function	function:May bind to RNA via its Arg/Ser-rich domain.,PTM:Phosphorylated upon DNA damage, probably by ATM or ATR.,similarity:Belongs to the Luc7 family.,similarity:Contains 1 C2H2-type zinc finger.,
Background	This gene encodes a protein that contains a C2H2-type zinc finger, coiled-coil region and arginine, serine-rich (RS) domain. A similar protein in mouse interacts with sodium channel modifier 1, and the encoded protein may be involved in the recognition of non-consensus splice donor sites in association with the U1 snRNP spliceosomal subunit. Alternatively spliced transcript variants encoding multiple isoforms have been observed for this gene. [provided by RefSeq, Sep 2011],

Nanjing BYabs science technology Co.,Ltd

网址: www.njbybio.com

官方热线: 025-5229-8998

监督电话: 15950492658



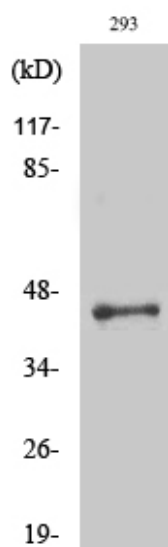
matters needing attention

Avoid repeated freezing and thawing!

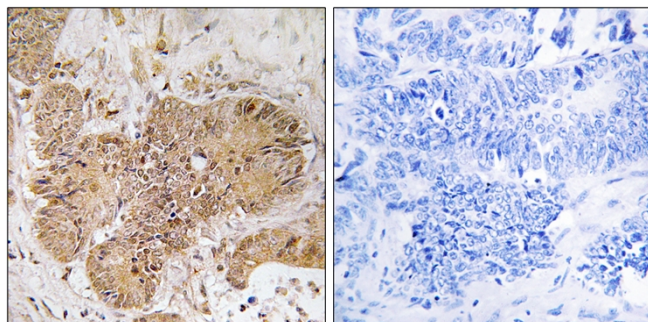
Usage suggestions

This product can be used in immunological reaction related experiments. For more information, please consult technical personnel.

Products Images



Western Blot analysis of various cells using LUC7L2 Polyclonal Antibody



Immunohistochemistry analysis of paraffin-embedded human colon carcinoma tissue, using LUC7L2 Antibody. The picture on the right is blocked with the synthesized peptide.

Nanjing BYabs science technology Co.,Ltd

网址: www.njbybio.com

官方热线: 025-5229-8998

监督电话: 15950492658