



NF-YC Polyclonal Antibody

Catalog No	BYab-01903
Isotype	IgG
Reactivity	Human;Mouse;Rat
Applications	WB;IHC;IF;ELISA
Gene Name	NFYC
Protein Name	Nuclear transcription factor Y subunit gamma
Immunogen	The antiserum was produced against synthesized peptide derived from human NFYC. AA range:1-50
Specificity	NF-YC Polyclonal Antibody detects endogenous levels of NF-YC protein.
Formulation	Liquid in PBS containing 50% glycerol, 0.5% BSA and 0.02% sodium azide.
Source	Polyclonal, Rabbit,IgG
Purification	The antibody was affinity-purified from rabbit antiserum by affinity-chromatography using epitope-specific immunogen.
Dilution	WB: 1/500 - 1/2000. IHC: 1/100 - 1/300. ELISA: 1/10000.. IF 1:50-200
Concentration	1 mg/ml
Purity	≥90%
Storage Stability	-20°C/1 year
Synonyms	NFYC; Nuclear transcription factor Y subunit gamma; CAAT box DNA-binding protein subunit C; Nuclear transcription factor Y subunit C; NF-YC; Transactivator HSM-1/2
Observed Band	50kD
Cell Pathway	Nucleus.
Tissue Specificity	Brain,Lymph node,Synovial membrane tissue,
Function	function:Stimulates the transcription of various genes by recognizing and binding to a CCAAT motif in promoters, for example in type 1 collagen, albumin and beta-actin genes.,similarity:Belongs to the NFYC/HAP5 subunit family.,subunit:Heterotrimeric transcription factor composed of three components, NF-YA, NF-YB and NF-YC. NF-YB and NF-YC must interact and dimerize for NF-YA association and DNA binding.,
Background	This gene encodes one subunit of a trimeric complex forming a highly conserved transcription factor that binds with high specificity to CCAAT motifs in the

Nanjing BYabscience technology Co.,Ltd



promoters of a variety of genes. The encoded protein, subunit C, forms a tight dimer with the B subunit, a prerequisite for subunit A association. The resulting trimer binds to DNA with high specificity and affinity. Subunits B and C each contain a histone-like motif. Multiple transcript variants encoding different isoforms have been found for this gene. [provided by RefSeq, Dec 2008],

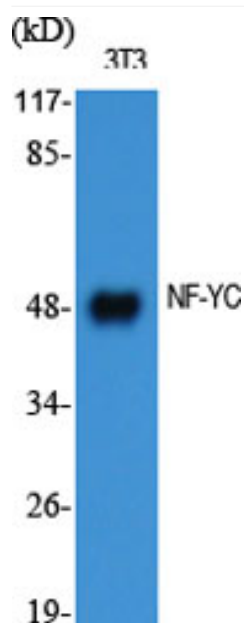
matters needing attention

Avoid repeated freezing and thawing!

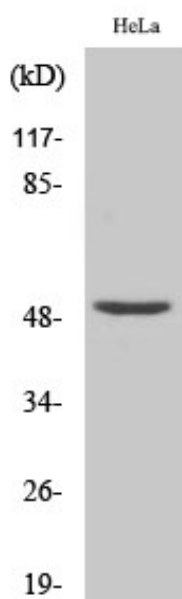
Usage suggestions

This product can be used in immunological reaction related experiments. For more information, please consult technical personnel.

Products Images

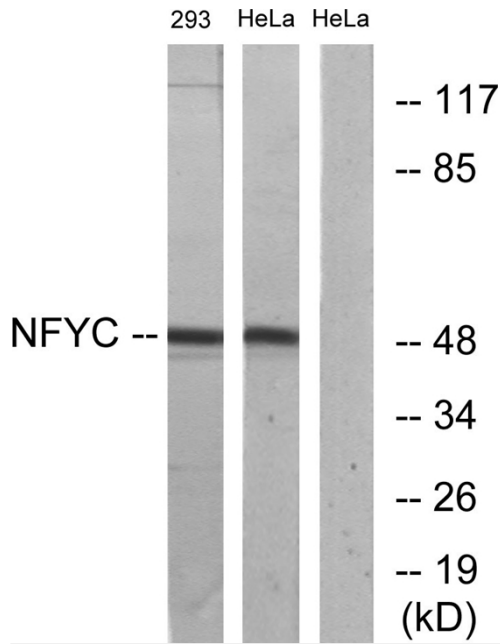


Western Blot analysis of various cells using NF-YC Polyclonal Antibody diluted at 1:1000

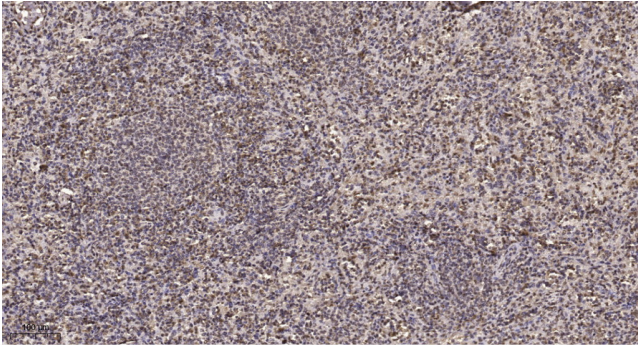


Western Blot analysis of 293 cells using NF-YC Polyclonal Antibody diluted at 1:1000

Nanjing BYabs science technology Co.,Ltd



Western blot analysis of lysates from HeLa and 293 cells, using NFYC Antibody. The lane on the right is blocked with the synthesized peptide.



Immunohistochemical analysis of paraffin-embedded human spleen. 1, Tris-EDTA, pH9.0 was used for antigen retrieval. 2 Antibody was diluted at 1:200 (4° overnight). 3, Secondary antibody was diluted at 1:200 (room temperature, 45min).