



NXF3 Polyclonal Antibody

Catalog No	BYab-01924
Isotype	IgG
Reactivity	Human;Rat;Mouse;
Applications	WB;IHC;IF;ELISA
Gene Name	NXF3
Protein Name	Nuclear RNA export factor 3
Immunogen	The antiserum was produced against synthesized peptide derived from human NXF3. AA range:72-121
Specificity	NXF3 Polyclonal Antibody detects endogenous levels of NXF3 protein.
Formulation	Liquid in PBS containing 50% glycerol, 0.5% BSA and 0.02% sodium azide.
Source	Polyclonal, Rabbit,IgG
Purification	The antibody was affinity-purified from rabbit antiserum by affinity-chromatography using epitope-specific immunogen.
Dilution	WB: 1/500 - 1/2000. IHC: 1/100 - 1/300. ELISA: 1/40000.. IF 1:50-200
Concentration	1 mg/ml
Purity	≥90%
Storage Stability	-20°C/1 year
Synonyms	NXF3; TAPL3; Nuclear RNA export factor 3; TAP-like protein 3; TAPL-3
Observed Band	60kD
Cell Pathway	Nucleus. Cytoplasm. Shuttles between the nucleus and the cytoplasm.
Tissue Specificity	Expressed at high level in testis and at low level in a small number of tissues.
Function	domain:Contains a novel CRM1-dependent nuclear export signal that compensates in cis for the loss of the nuclear pore targeting domain.,domain:Lacks C-terminal domain that mediates direct interactions with nucleoporins.,function:May function as a tissue-specific nuclear mRNA export factor.,miscellaneous:The RNA-binding domain is a non-canonical RNP-type domain.,similarity:Belongs to the NXF family.,similarity:Contains 1 LRR (leucine-rich) repeat.,similarity:Contains 1 NTF2 domain.,similarity:Contains 1 RRM (RNA recognition motif) domain.,subcellular location:Shuttles between the nucleus and the cytoplasm.,subunit:Interacts with NXT1, NXT2, E1B-AP5 and CRM1 nuclear export factor.,tissue specificity:Expressed at high level in testis and at low level in a small number of tissues.,

Nanjing BYabscience technology Co.,Ltd



Background

This gene is one member of a family of nuclear RNA export factor genes. Common domain features of this family are a noncanonical RNP-type RNA-binding domain (RBD), 4 leucine-rich repeats (LRRs), a nuclear transport factor 2 (NTF2)-like domain that allows heterodimerization with NTF2-related export protein-1 (NXT1), and a ubiquitin-associated domain that mediates interactions with nucleoporins. The LRRs and NTF2-like domains are required for export activity. Alternative splicing seems to be a common mechanism in this gene family. The encoded protein of this gene has shortened LRR and ubiquitin-associated domains and its RBD is unable to bind RNA. It is located in the nucleoplasm but is not associated with either the nuclear envelope or the nucleolus. [provided by RefSeq, Jul 2008],

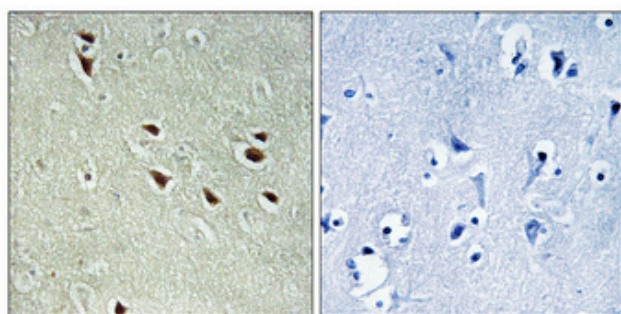
matters needing attention

Avoid repeated freezing and thawing!

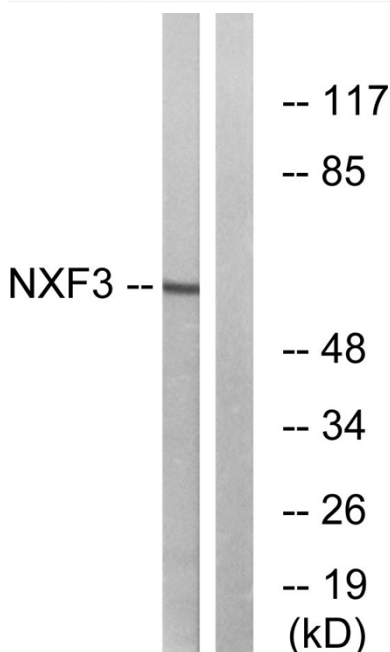
Usage suggestions

This product can be used in immunological reaction related experiments. For more information, please consult technical personnel.

Products Images

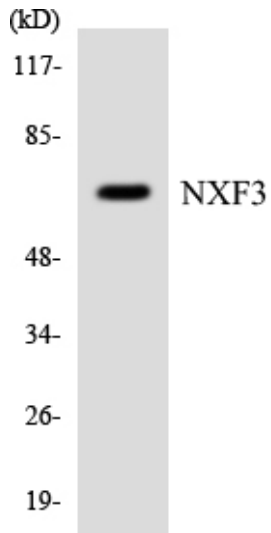


Immunohistochemical analysis of paraffin-embedded Human brain. Antibody was diluted at 1:100(4° overnight). High-pressure and temperature Tris-EDTA,pH8.0 was used for antigen retrieval. Negative contrl (right) obtained from antibody was pre-absorbed by immunogen peptide.



Western blot analysis of lysates from MCF-7 cells, using NXF3 Antibody. The lane on the right is blocked with the synthesized peptide.

Nanjing BYabscience technology Co.,Ltd



Western blot analysis of the lysates from HepG2 cells using NXF3 antibody.