



Per3 Polyclonal Antibody

Catalog No	BYab-01938
Isotype	IgG
Reactivity	Human;Rat;Mouse;
Applications	WB;IHC;IF;ELISA
Gene Name	PER3
Protein Name	Period circadian protein homolog 3
Immunogen	The antiserum was produced against synthesized peptide derived from human PER3. AA range:21-70
Specificity	Per3 Polyclonal Antibody detects endogenous levels of Per3 protein.
Formulation	Liquid in PBS containing 50% glycerol, 0.5% BSA and 0.02% sodium azide.
Source	Polyclonal, Rabbit,IgG
Purification	The antibody was affinity-purified from rabbit antiserum by affinity-chromatography using epitope-specific immunogen.
Dilution	WB: 1/500 - 1/2000. IHC: 1/100 - 1/300. ELISA: 1/40000.. IF 1:50-200
Concentration	1 mg/ml
Purity	≥90%
Storage Stability	-20°C/1 year
Synonyms	PER3; GIG13; Period circadian protein homolog 3; hPER3; Cell growth-inhibiting gene 13 protein; Circadian clock protein PERIOD 3
Observed Band	43kD
Cell Pathway	Cytoplasm . Nucleus . Mainly cytoplasmic. Translocates to the nucleus through binding PER1, PER2, CRY1 or CRY2, but not TIMELESS. .
Tissue Specificity	Brain,
Function	function:Component of the circadian clock mechanism which is essential for generating circadian rhythms. Function unknown.,PTM:Phosphorylation appears to require association with PER1 and translocation to the nucleus.,PTM:Ubiquitinated.,similarity:Contains 1 PAC (PAS-associated C-terminal) domain.,similarity:Contains 2 PAS (PER-ARNT-SIM) domains.,subcellular location:Mainly cytoplasmic. Translocates to the nucleus through binding PER1, PER2, CRY1 or CRY2, but not TIMELESS.,subunit:Homodimer. Component of the circadian core oscillator, which includes the CRY proteins, CLOCK or NPAS2, BMAL1 or BMAL2, CSNK1D and/or CSNK1E, TIMELESS and the PER proteins. Interacts directly with PER1,

Nanjing BYabscience technology Co.,Ltd



PER2, CRY1, CRY2, and TIMELESS. Interaction with CSNK1D or CSNK1E promotes nuclear location of PER proteins.,

Background

This gene is a member of the Period family of genes and is expressed in a circadian pattern in the suprachiasmatic nucleus, the primary circadian pacemaker in the mammalian brain. Genes in this family encode components of the circadian rhythms of locomotor activity, metabolism, and behavior. This gene is upregulated by CLOCK/ARNTL heterodimers but then represses this upregulation in a feedback loop using PER/CRY heterodimers to interact with CLOCK/ARNTL. Polymorphisms in this gene have been linked to sleep disorders. Multiple transcript variants encoding different isoforms have been found for this gene. [provided by RefSeq, Jan 2014],

matters needing attention

Avoid repeated freezing and thawing!

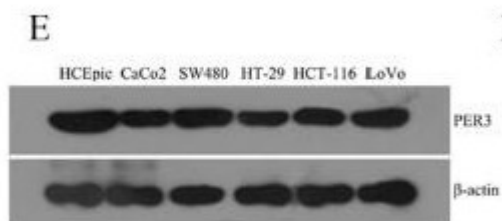
Usage suggestions

This product can be used in immunological reaction related experiments. For more information, please consult technical personnel.

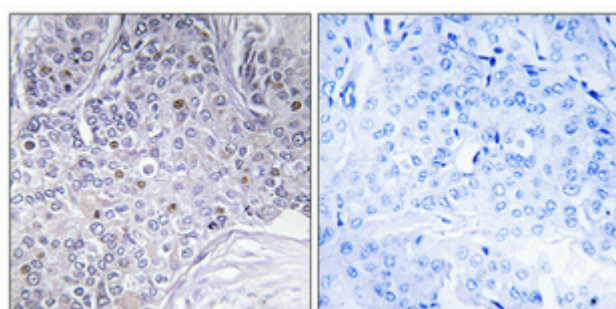
Nanjing BYabscience technology Co.,Ltd



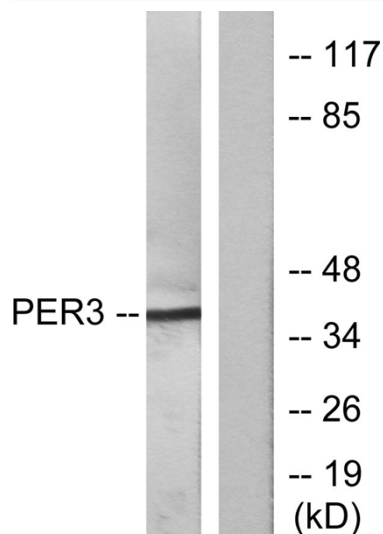
Products Images



Hong, Zhang, et al. "PER3, a novel target of miR-103, plays a suppressive role in colorectal cancer in vitro." BMB reports 47.9 (2014): 500.

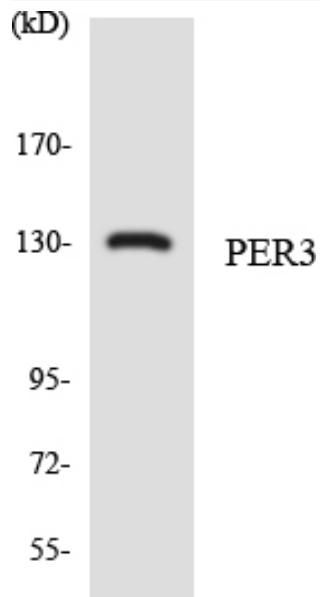


Immunohistochemical analysis of paraffin-embedded Human breast cancer. Antibody was diluted at 1:100(4° overnight). High-pressure and temperature Tris-EDTA,pH8.0 was used for antigen retrieval. Negative contrl (right) obtained from antibody was pre-absorbed by immunogen peptide.



Western blot analysis of lysates from Jurkat cells, treated with insulin 0.01U/ml 15', using PER3 Antibody. The lane on the right is blocked with the synthesized peptide.

Nanjing BYabs science technology Co.,Ltd



Western blot analysis of the lysates from HepG2 cells using PER3 antibody.