



# POLR1E Polyclonal Antibody

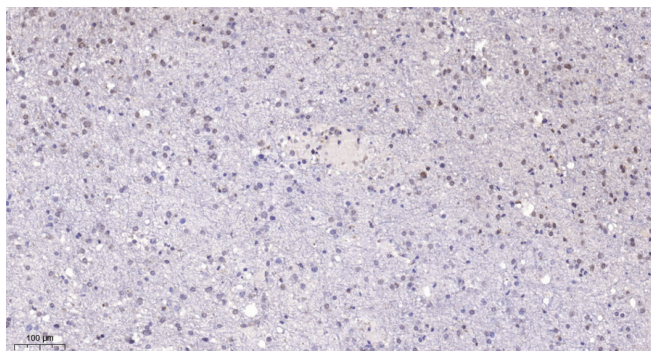
<b>Catalog No</b>	BYab-01946
<b>Isotype</b>	IgG
<b>Reactivity</b>	Human;Rat;Mouse;
<b>Applications</b>	WB;IHC;IF;ELISA
<b>Gene Name</b>	POLR1E
<b>Protein Name</b>	DNA-directed RNA polymerase I subunit RPA49
<b>Immunogen</b>	Synthesized peptide derived from the Internal region of human POLR1E.
<b>Specificity</b>	POLR1E Polyclonal Antibody detects endogenous levels of POLR1E protein.
<b>Formulation</b>	Liquid in PBS containing 50% glycerol, 0.5% BSA and 0.02% sodium azide.
<b>Source</b>	Polyclonal, Rabbit,IgG
<b>Purification</b>	The antibody was affinity-purified from rabbit antiserum by affinity-chromatography using epitope-specific immunogen.
<b>Dilution</b>	WB: 1/500 - 1/2000. IHC: 1/100 - 1/300. ELISA: 1/10000.. IF 1:50-200
<b>Concentration</b>	1 mg/ml
<b>Purity</b>	≥90%
<b>Storage Stability</b>	-20°C/1 year
<b>Synonyms</b>	POLR1E; PAF53; PRAF1; DNA-directed RNA polymerase I subunit RPA49; RNA polymerase I subunit A49; DNA-directed RNA polymerase I subunit E; RNA polymerase I-associated factor 1; RNA polymerase I-associated factor 53
<b>Observed Band</b>	49kD
<b>Cell Pathway</b>	Nucleus, nucleolus .
<b>Tissue Specificity</b>	Cervix,Lung,Placenta,
<b>Function</b>	function:DNA-dependent RNA polymerase catalyzes the transcription of DNA into RNA using the four ribonucleoside triphosphates as substrates. Component of RNA polymerase I which synthesizes ribosomal RNA precursors. Appears to be involved in the formation of the initiation complex at the promoter by mediating the interaction between Pol I and UBTF/UBF.,similarity:Belongs to the eukaryotic RPA49/POLR1E RNA polymerase subunit family.,subunit:Component of the RNA polymerase I (Pol I) complex consisting of at least 13 subunits (By similarity). Interacts with PAF49/CD3EAP. Also binds UBTF/UBF.,

**Nanjing BYabscience technology Co.,Ltd**



<b>Background</b>	function:DNA-dependent RNA polymerase catalyzes the transcription of DNA into RNA using the four ribonucleoside triphosphates as substrates. Component of RNA polymerase I which synthesizes ribosomal RNA precursors. Appears to be involved in the formation of the initiation complex at the promoter by mediating the interaction between Pol I and UBTF/UBF.,similarity:Belongs to the eukaryotic RPA49/POLR1E RNA polymerase subunit family.,subunit:Component of the RNA polymerase I (Pol I) complex consisting of at least 13 subunits (By similarity). Interacts with PAF49/CD3EAP. Also binds UBTF/UBF.,
<b>matters needing attention</b>	Avoid repeated freezing and thawing!
<b>Usage suggestions</b>	This product can be used in immunological reaction related experiments. For more information, please consult technical personnel.

## Products Images



Immunohistochemical analysis of paraffin-embedded human brain. 1, Tris-EDTA,pH9.0 was used for antigen retrieval. 2 Antibody was diluted at 1:200(4° overnight.3,Secondary antibody was diluted at 1:200(room temperature, 45min).