



POLR3A Polyclonal Antibody

Catalog No	BYab-01949
Isotype	IgG
Reactivity	Human;Mouse;Monkey
Applications	WB;IHC;IF;ELISA
Gene Name	POLR3A
Protein Name	DNA-directed RNA polymerase III subunit RPC1
Immunogen	The antiserum was produced against synthesized peptide derived from human RPC1. AA range:31-80
Specificity	POLR3A Polyclonal Antibody detects endogenous levels of POLR3A protein.
Formulation	Liquid in PBS containing 50% glycerol, 0.5% BSA and 0.02% sodium azide.
Source	Polyclonal, Rabbit,IgG
Purification	The antibody was affinity-purified from rabbit antiserum by affinity-chromatography using epitope-specific immunogen.
Dilution	WB: 1/500 - 1/2000. IHC: 1/100 - 1/300. ELISA: 1/40000.. IF 1:50-200
Concentration	1 mg/ml
Purity	≥90%
Storage Stability	-20°C/1 year
Synonyms	POLR3A; DNA-directed RNA polymerase III subunit RPC1; RNA polymerase III subunit C1; DNA-directed RNA polymerase III largest subunit; DNA-directed RNA polymerase III subunit A; RNA polymerase III 155 kDa subunit; RPC155; RNA polymerase III
Observed Band	156kD
Cell Pathway	Nucleus.
Tissue Specificity	Expressed in the brain, in the cortex and the white matter (at protein level).
Function	catalytic activity:Nucleoside triphosphate + RNA(n) = diphosphate + RNA(n+1).,function:DNA-dependent RNA polymerase catalyzes the transcription of DNA into RNA using the four ribonucleoside triphosphates as substrates. Largest and catalytic core component of RNA polymerase III which synthesizes small RNAs, such as 5S rRNA and tRNAs. Forms the polymerase active center together with the second largest subunit. A single stranded DNA template strand of the promoter is positioned within the central active site cleft of Pol III. A bridging

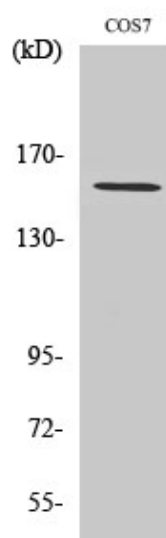
Nanjing BYabscience technology Co.,Ltd



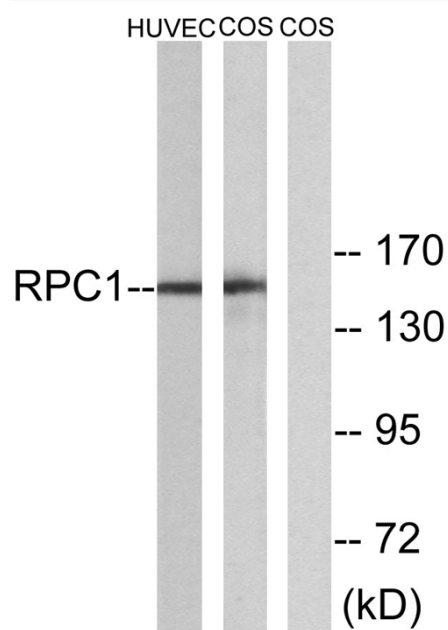
	helix emanates from RPC1 and crosses the cleft near the catalytic site and is thought to promote translocation of Pol III by acting as a ratchet that moves the RNA-DNA hybrid through the active site by switching from straight to bent conformations at each step of nucleotide addition.,similarity:Belongs to the RNA polymerase beta' chain family.,subunit:Compon
Background	The protein encoded by this gene is the catalytic component of RNA polymerase III, which synthesizes small RNAs. The encoded protein also acts as a sensor to detect foreign DNA and trigger an innate immune response. [provided by RefSeq, Aug 2011],
matters needing attention	Avoid repeated freezing and thawing!
Usage suggestions	This product can be used in immunological reaction related experiments. For more information, please consult technical personnel.



Products Images



Western Blot analysis of various cells using POLR3A Polyclonal Antibody cells nucleus extracted by Minute TM Cytoplasmic and Nuclear Fractionation kit (SC-003, Inventbiotech, MN, USA).



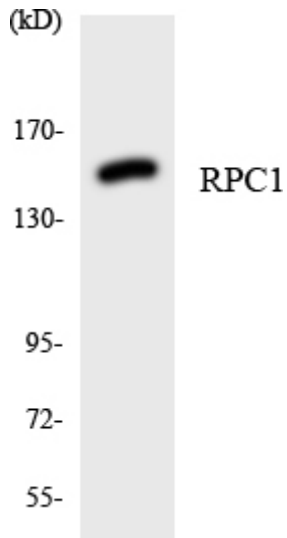
Western blot analysis of lysates from COS and HUVEC cells, using RPC1 Antibody. The lane on the right is blocked with the synthesized peptide.

Nanjing BYabscience technology Co.,Ltd

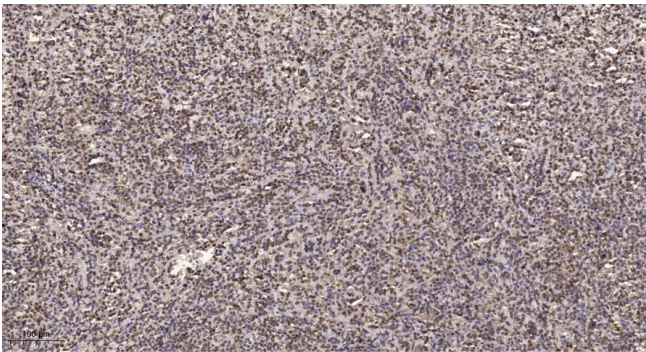
网址: www.njbybio.com

官方热线: 025-5229-8998

监督电话: 15950492658



Western blot analysis of the lysates from 293 cells using RPC1 antibody.



Immunohistochemical analysis of paraffin-embedded human spleen. 1, Tris-EDTA, pH9.0 was used for antigen retrieval. 2 Antibody was diluted at 1:200 (4° overnight). 3, Secondary antibody was diluted at 1:200 (room temperature, 45min).