



POLR3H Polyclonal Antibody

Catalog No	BYab-01954
Isotype	IgG
Reactivity	Human;Mouse;Rat
Applications	WB;IHC;IF;ELISA
Gene Name	POLR3H
Protein Name	DNA-directed RNA polymerase III subunit RPC8
Immunogen	The antiserum was produced against synthesized peptide derived from human RPC8. AA range:151-200
Specificity	POLR3H Polyclonal Antibody detects endogenous levels of POLR3H protein.
Formulation	Liquid in PBS containing 50% glycerol, 0.5% BSA and 0.02% sodium azide.
Source	Polyclonal, Rabbit,IgG
Purification	The antibody was affinity-purified from rabbit antiserum by affinity-chromatography using epitope-specific immunogen.
Dilution	WB: 1/500 - 1/2000. IHC: 1/100 - 1/300. ELISA: 1/40000.. IF 1:50-200
Concentration	1 mg/ml
Purity	≥90%
Storage Stability	-20°C/1 year
Synonyms	POLR3H; KIAA1665; RPC8; DNA-directed RNA polymerase III subunit RPC8; RNA polymerase III subunit C8; DNA-directed RNA polymerase III subunit H; RNA polymerase III subunit 22.9 kDa subunit; RPC22.9
Observed Band	23kD
Cell Pathway	Nucleus.
Tissue Specificity	Adrenal gland,Brain,Pituitary,
Function	function:DNA-dependent RNA polymerase catalyzes the transcription of DNA into RNA using the four ribonucleoside triphosphates as substrates. Specific peripheric component of RNA polymerase III which synthesizes small RNAs, such as 5S rRNA and tRNAs.,similarity:Belongs to the eukaryotic RPB7/RPC8 RNA polymerase subunit family.,subunit:Component of the RNA polymerase III (Pol III) complex consisting of 17 subunits (By similarity). Interacts with CRCP/RPC9. POLR3H/RPC8 and CRCP/RPC9 probably form a Pol III subcomplex.,

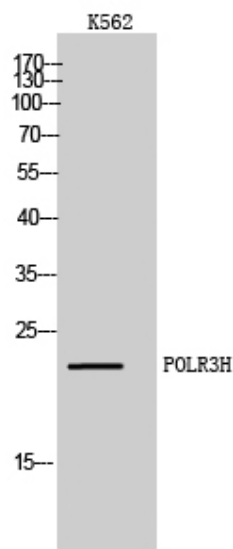
Nanjing BYabs science technology Co.,Ltd



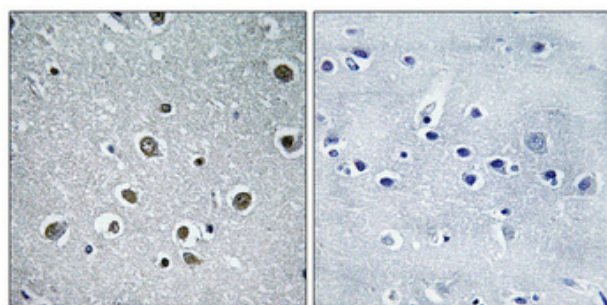
Background	function:DNA-dependent RNA polymerase catalyzes the transcription of DNA into RNA using the four ribonucleoside triphosphates as substrates. Specific peripheric component of RNA polymerase III which synthesizes small RNAs, such as 5S rRNA and tRNAs.,similarity:Belongs to the eukaryotic RPB7/RPC8 RNA polymerase subunit family.,subunit:Component of the RNA polymerase III (Pol III) complex consisting of 17 subunits (By similarity). Interacts with CRCP/RPC9. POLR3H/RPC8 and CRCP/RPC9 probably form a Pol III subcomplex.,
matters needing attention	Avoid repeated freezing and thawing!
Usage suggestions	This product can be used in immunological reaction related experiments. For more information, please consult technical personnel.



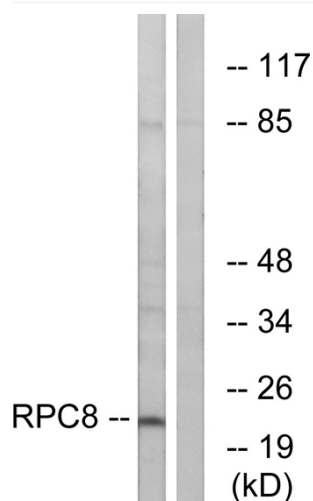
Products Images



Western Blot analysis of K562 cells using POLR3H Polyclonal Antibody diluted at 1:1000 cells nucleus extracted by Minute TM Cytoplasmic and Nuclear Fractionation kit (SC-003, Invent biotech, MN, USA).



Immunohistochemical analysis of paraffin-embedded Human brain. Antibody was diluted at 1:100 (4° overnight). High-pressure and temperature Tris-EDTA, pH 8.0 was used for antigen retrieval. Negative control (right) obtained from antibody was pre-absorbed by immunogen peptide.



Western blot analysis of lysates from K562 cells, using RPC8 Antibody. The lane on the right is blocked with the synthesized peptide.

Nanjing BYabs science technology Co., Ltd

网址: www.njbybio.com

官方热线: 025-5229-8998

监督电话: 15950492658