



QM Polyclonal Antibody

Catalog No	BYab-01965
Isotype	IgG
Reactivity	Human;Mouse;Rat;Cat
Applications	WB;IHC
Gene Name	RPL10
Protein Name	60S ribosomal protein L10
Immunogen	The antiserum was produced against synthesized peptide derived from human 60S Ribosomal Protein L10. AA range:1-50
Specificity	QM Polyclonal Antibody detects endogenous levels of QM protein.
Formulation	Liquid in PBS containing 50% glycerol, 0.5% BSA and 0.02% sodium azide.
Source	Polyclonal, Rabbit,IgG
Purification	The antibody was affinity-purified from rabbit antiserum by affinity-chromatography using epitope-specific immunogen.
Dilution	WB 1:500-2000;IHC-p 1:50-300
Concentration	1 mg/ml
Purity	≥90%
Storage Stability	-20°C/1 year
Synonyms	RPL10; DXS648E; QM; 60S ribosomal protein L10; Laminin receptor homolog; Protein QM; Tumor suppressor QM
Observed Band	25kD
Cell Pathway	endoplasmic reticulum,cytosol,ribosome,membrane,cytosolic large ribosomal subunit,
Tissue Specificity	Brain,Human lung,Mammary cancer,Mammary gland,Ovarian carcinoma,Pancreatic cancer,P
Function	developmental stage:Down-regulated during adipocyte, kidney, and heart differentiation.,disease:Defects in RPL10 may be the cause of susceptibility to X-linked autism [MIM:209850]. Autism is a pervasive developmental disorder (PDD), prototypically characterized by impairments in reciprocal social interaction and communication, restricted and stereotyped patterns of interests and activities, and the presence of developmental abnormalities by 3 years of age.,similarity:Belongs to the ribosomal protein L10e family.,
Background	This gene encodes a ribosomal protein that is a component of the 60S ribosome subunit. The related protein in chicken can bind to c-Jun and can repress

Nanjing BYabscience technology Co.,Ltd



c-Jun-mediated transcriptional activation. Some studies have detected an association between variation in this gene and autism spectrum disorders, though others do not detect this relationship. There are multiple pseudogenes of this gene dispersed throughout the genome. Alternative splicing results in multiple transcript variants. [provided by RefSeq, Jan 2015],

matters needing attention

Avoid repeated freezing and thawing!

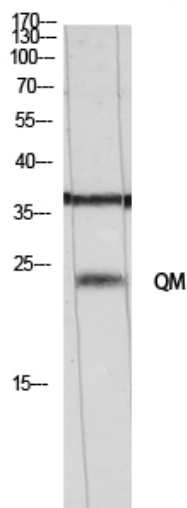
Usage suggestions

This product can be used in immunological reaction related experiments. For more information, please consult technical personnel.

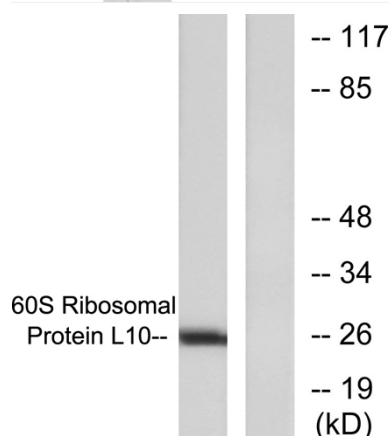


Products Images

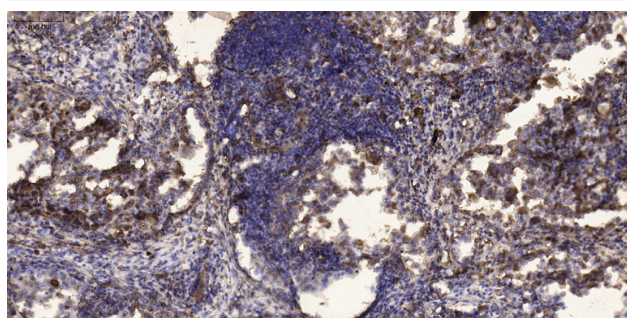
customer's (cat sample)



Western Blot analysis of customer's (cat sample) using QM Polyclonal Antibody diluted at 1:500



Western blot analysis of lysates from K562 cells, treated with Insulin 0.01u/ml 15min, using 60S Ribosomal Protein L10 Antibody. The lane on the right is blocked with the synthesized peptide.



Immunohistochemical analysis of paraffin-embedded human Squamous cell carcinoma of lung. 1, Antibody was diluted at 1:200(4° overnight). 2, Tris-EDTA,pH9.0 was used for antigen retrieval. 3,Secondary antibody was diluted at 1:200(room temperature, 45min).

Nanjing BYabs science technology Co.,Ltd

网址: www.njbybio.com

官方热线: 025-5229-8998

监督电话: 15950492658