



RBAK Polyclonal Antibody

Catalog No	BYab-01967
Isotype	IgG
Reactivity	Human;Mouse
Applications	WB;IF;ELISA;IHC
Gene Name	RBAK
Protein Name	RB-associated KRAB zinc finger protein
Immunogen	The antiserum was produced against synthesized peptide derived from human RBAK. AA range:1-50
Specificity	RBAK Polyclonal Antibody detects endogenous levels of RBAK protein.
Formulation	Liquid in PBS containing 50% glycerol, 0.5% BSA and 0.02% sodium azide.
Source	Polyclonal, Rabbit,IgG
Purification	The antibody was affinity-purified from rabbit antiserum by affinity-chromatography using epitope-specific immunogen.
Dilution	WB 1:500-2000; IF/ICC 1:50-200;ELISA 1:2000-20000;IHC-p 1:50-200
Concentration	1 mg/ml
Purity	≥90%
Storage Stability	-20°C/1 year
Synonyms	RBAK; ZNF769; RB-associated KRAB zinc finger protein; RB-associated KRAB repressor; hRBaK; Zinc finger protein 769
Observed Band	85kD
Cell Pathway	Nucleus .
Tissue Specificity	Expressed in bone, brain, heart, kidney, liver, lung, pancreas and placenta.
Function	function:May repress E2F-dependent transcription. May promote AR-dependent transcription.,similarity:Belongs to the krueppel C2H2-type zinc-finger protein family.,similarity:Contains 1 KRAB domain.,similarity:Contains 16 C2H2-type zinc fingers.,subunit:Interacts with AR and RB1. May also interact with other nuclear hormone receptors such as NR3C1/GR.,tissue specificity:Expressed in bone, brain, heart, kidney, liver, lung, pancreas and placenta.,
Background	This gene encodes a nuclear protein which interacts with the tumor suppressor retinoblastoma 1. The two interacting proteins are thought to act as a transcriptional repressor for promoters which are activated by the E2F1 transcription factor. This protein contains a Kruppel-associated box (KRAB),

Nanjing BYabscience technology Co.,Ltd



which is a transcriptional repressor motif. Read-through transcripts that include exons from the downstream gene LOC389458 are expressed from this locus. [provided by RefSeq, Mar 2011],

matters needing attention

Avoid repeated freezing and thawing!

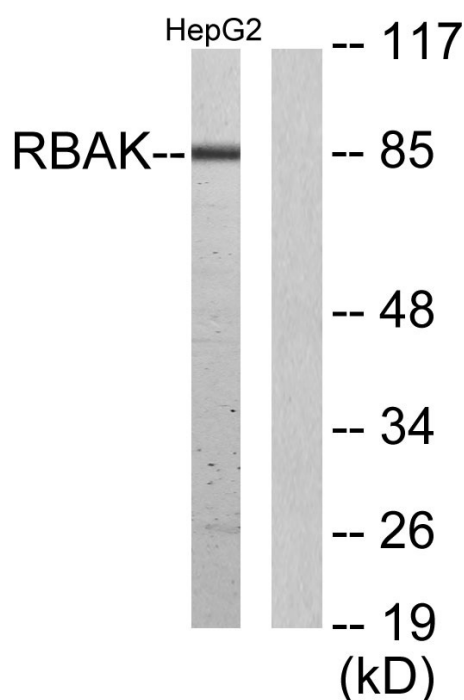
Usage suggestions

This product can be used in immunological reaction related experiments. For more information, please consult technical personnel.

Products Images

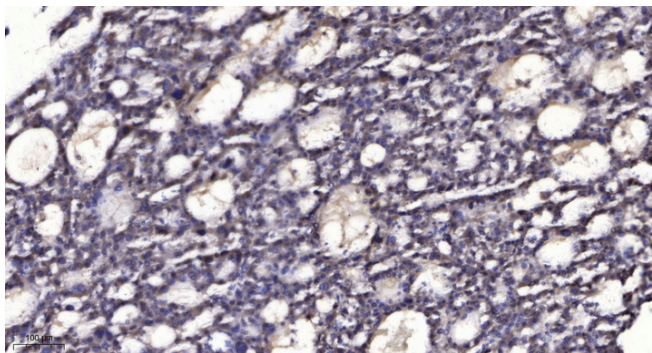


Western Blot analysis of various cells using RBAK Polyclonal Antibody cells nucleus extracted by Minute TM Cytoplasmic and Nuclear Fractionation kit (SC-003, Invent biotech, MN, USA).



Western blot analysis of lysates from HepG2 cells, using RBAK Antibody. The lane on the right is blocked with the synthesized peptide.

Nanjing BYabs science technology Co., Ltd



Immunohistochemical analysis of paraffin-embedded human liver cancer. 1, Antibody was diluted at 1:200(4° overnight). 2, Tris-EDTA,pH9.0 was used for antigen retrieval. 3,Secondary antibody was diluted at 1:200(room temperature, 45min).