



# RFX2 Polyclonal Antibody

<b>Catalog No</b>	BYab-01979
<b>Isotype</b>	IgG
<b>Reactivity</b>	Human;Rat;Mouse;
<b>Applications</b>	IHC;IF;ELISA
<b>Gene Name</b>	RFX2
<b>Protein Name</b>	DNA-binding protein RFX2
<b>Immunogen</b>	The antiserum was produced against synthesized peptide derived from human RFX2. AA range:661-710
<b>Specificity</b>	RFX2 Polyclonal Antibody detects endogenous levels of RFX2 protein.
<b>Formulation</b>	Liquid in PBS containing 50% glycerol, 0.5% BSA and 0.02% sodium azide.
<b>Source</b>	Polyclonal, Rabbit,IgG
<b>Purification</b>	The antibody was affinity-purified from rabbit antiserum by affinity-chromatography using epitope-specific immunogen.
<b>Dilution</b>	IHC: 1/100 - 1/300. ELISA: 1/10000.. IF 1:50-200
<b>Concentration</b>	1 mg/ml
<b>Purity</b>	≥90%
<b>Storage Stability</b>	-20°C/1 year
<b>Synonyms</b>	RFX2; DNA-binding protein RFX2; Regulatory factor X 2
<b>Observed Band</b>	
<b>Cell Pathway</b>	Nucleus . Cytoplasm . Mainly expressed in the nucleus and at lower level in cytoplasm. .
<b>Tissue Specificity</b>	
<b>Function</b>	similarity:Belongs to the RFX family.,
<b>Background</b>	This gene is a member of the regulatory factor X gene family, which encodes transcription factors that contain a highly-conserved winged helix DNA binding domain. The protein encoded by this gene is structurally related to regulatory factors X1, X3, X4, and X5. It is a transcriptional activator that can bind DNA as a monomer or as a heterodimer with other RFX family members. This protein can bind to cis elements in the promoter of the IL-5 receptor alpha gene. Two transcript variants encoding different isoforms have been described for this gene, and both variants utilize alternative polyadenylation sites. [provided by RefSeq,

**Nanjing BYabscience technology Co.,Ltd**



Jul 2008],

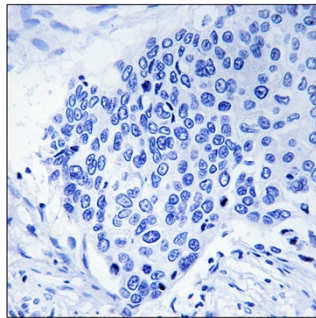
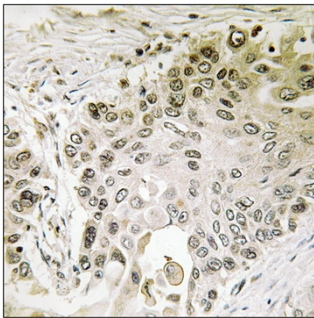
**matters needing attention**

Avoid repeated freezing and thawing!

**Usage suggestions**

This product can be used in immunological reaction related experiments. For more information, please consult technical personnel.

## Products Images



Immunohistochemistry analysis of paraffin-embedded human lung carcinoma, using RFX2 Antibody. The picture on the right is blocked with the synthesized peptide.

Nanjing BYabscience technology Co.,Ltd

网址: [www.njbybio.com](http://www.njbybio.com)

官方热线: 025-5229-8998

监督电话: 15950492658