



SAF-A2 Polyclonal Antibody

Catalog No	BYab-02001
Isotype	IgG
Reactivity	Human;Mouse
Applications	WB;IHC;IF;ELISA
Gene Name	HNRNPUL2
Protein Name	Heterogeneous nuclear ribonucleoprotein U-like protein 2
Immunogen	The antiserum was produced against synthesized peptide derived from human HNRNPUL2. AA range:601-650
Specificity	SAF-A2 Polyclonal Antibody detects endogenous levels of SAF-A2 protein.
Formulation	Liquid in PBS containing 50% glycerol, 0.5% BSA and 0.02% sodium azide.
Source	Polyclonal, Rabbit,IgG
Purification	The antibody was affinity-purified from rabbit antiserum by affinity-chromatography using epitope-specific immunogen.
Dilution	WB: 1/500 - 1/2000. IHC: 1/100 - 1/300. ELISA: 1/40000.. IF 1:50-200
Concentration	1 mg/ml
Purity	≥90%
Storage Stability	-20°C/1 year
Synonyms	HNRNPUL2; HNRPUL2; Heterogeneous nuclear ribonucleoprotein U-like protein 2; Scaffold-attachment factor A2; SAF-A2
Observed Band	85kD
Cell Pathway	Nucleus .
Tissue Specificity	Epithelium,Liver,Melanoma,Ovarian carcinoma,
Function	similarity:Contains 1 B30.2/SPRY domain.,similarity:Contains 1 SAP domain.,subunit:Binds to MLF1 and retains it in the nucleus.,
Background	similarity:Contains 1 B30.2/SPRY domain.,similarity:Contains 1 SAP domain.,subunit:Binds to MLF1 and retains it in the nucleus.,
matters needing attention	Avoid repeated freezing and thawing!

Nanjing BYabs science technology Co.,Ltd

网址: www.njbybio.com

官方热线: 025-5229-8998

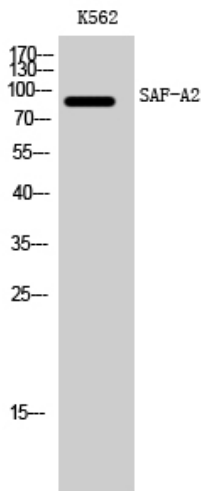
监督电话: 15950492658



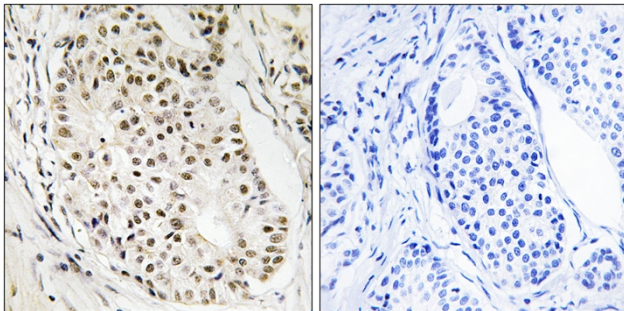
Usage suggestions

This product can be used in immunological reaction related experiments. For more information, please consult technical personnel.

Products Images



Western Blot analysis of K562 cells using SAF-A2 Polyclonal Antibody cells nucleus extracted by Minute TM Cytoplasmic and Nuclear Fractionation kit (SC-003, Inventbiotech, MN, USA).



Immunohistochemistry analysis of paraffin-embedded human breast carcinoma tissue, using HNRNPUL2 Antibody. The picture on the right is blocked with the synthesized peptide.