



SAP 49 Polyclonal Antibody

Catalog No	BYab-02003
Isotype	IgG
Reactivity	Human;Mouse;Rat
Applications	WB;IHC;IF;ELISA
Gene Name	SF3B4
Protein Name	Splicing factor 3B subunit 4
Immunogen	The antiserum was produced against synthesized peptide derived from human SF3B4. AA range:61-110
Specificity	SAP 49 Polyclonal Antibody detects endogenous levels of SAP 49 protein.
Formulation	Liquid in PBS containing 50% glycerol, 0.5% BSA and 0.02% sodium azide.
Source	Polyclonal, Rabbit,IgG
Purification	The antibody was affinity-purified from rabbit antiserum by affinity-chromatography using epitope-specific immunogen.
Dilution	WB: 1/500 - 1/2000. IHC: 1/100 - 1/300. ELISA: 1/40000.. IF 1:50-200
Concentration	1 mg/ml
Purity	≥90%
Storage Stability	-20°C/1 year
Synonyms	SF3B4; SAP49; Splicing factor 3B subunit 4; Pre-mRNA-splicing factor SF3b 49 kDa subunit; SF3b50; Spliceosome-associated protein 49; SAP 49
Observed Band	55kD
Cell Pathway	Nucleus .
Tissue Specificity	Ovarian carcinoma,Skin,Testis,Thymus,
Function	function:Subunit of the splicing factor SF3B required for 'A' complex assembly formed by the stable binding of U2 snRNP to the branchpoint sequence (BPS) in pre-mRNA. Sequence independent binding of SF3A/SF3B complex upstream of the branch site is essential, it may anchor U2 snRNP to the pre-mRNA. May also be involved in the assembly of the 'E' complex. SF3B4 has been found in complex 'B' and 'C' as well. Belongs also to the minor U12-dependent spliceosome, which is involved in the splicing of rare class of nuclear pre-mRNA intron.,similarity:Belongs to the SF3B4 family.,similarity:Contains 2 RRM (RNA recognition motif) domains.,subunit:Component of splicing factor SF3B which is composed of at least eight subunits; SF3B1/SAP155/SF3B155,

Nanjing BYabscience technology Co.,Ltd



SF3B2/SAP145/SF3B145, SF3B3/SAP130/SF3B130, SF3B4/SAP49/SF3B49, SF3B14A, PHF5A/SF3B14B, SF3B10 and SF3B125. SF3B associates with the splicing factor SF3A

Background

This gene encodes one of four subunits of the splicing factor 3B. The protein encoded by this gene cross-links to a region in the pre-mRNA immediately upstream of the branchpoint sequence in pre-mRNA in the prespliceosomal complex A. It also may be involved in the assembly of the B, C and E spliceosomal complexes. In addition to RNA-binding activity, this protein interacts directly and highly specifically with subunit 2 of the splicing factor 3B. This protein contains two N-terminal RNA-recognition motifs (RRMs), consistent with the observation that it binds directly to pre-mRNA. [provided by RefSeq, Jul 2008],

matters needing attention

Avoid repeated freezing and thawing!

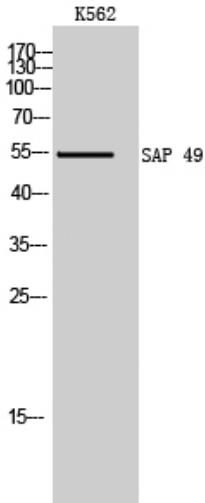
Usage suggestions

This product can be used in immunological reaction related experiments. For more information, please consult technical personnel.

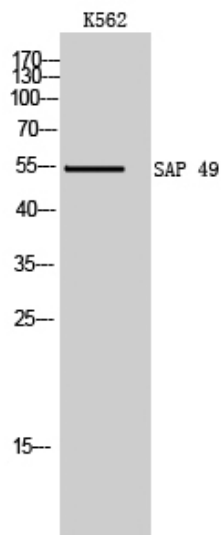
Nanjing BYabscience technology Co.,Ltd



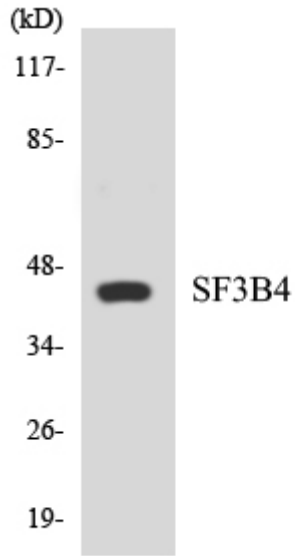
Products Images



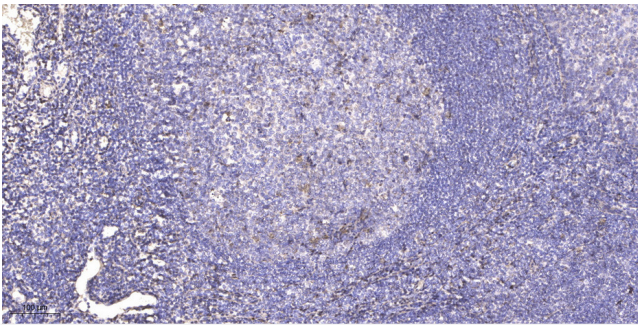
Western Blot analysis of K562 cells using SAP 49 Polyclonal Antibody cells nucleus extracted by Minute TM Cytoplasmic and Nuclear Fractionation kit (SC-003, Inventbiotech, MN, USA).



Western Blot analysis of K562 cells using SAP 49 Polyclonal Antibody cells nucleus extracted by Minute TM Cytoplasmic and Nuclear Fractionation kit (SC-003, Inventbiotech, MN, USA).



Western blot analysis of the lysates from 293 cells using SF3B4 antibody.



Immunohistochemical analysis of paraffin-embedded human tonsil. 1, Antibody was diluted at 1:200(4° overnight). 2, Tris-EDTA,pH9.0 was used for antigen retrieval. 3,Secondary antibody was diluted at 1:200(room temperature, 45min).