



# SFRS15 Polyclonal Antibody

<b>Catalog No</b>	BYab-02011
<b>Isotype</b>	IgG
<b>Reactivity</b>	Human;Mouse;Rat
<b>Applications</b>	WB;IHC;IF;ELISA
<b>Gene Name</b>	SCAF4
<b>Protein Name</b>	Splicing factor arginine/serine-rich 15
<b>Immunogen</b>	The antiserum was produced against synthesized peptide derived from human SFRS15. AA range:601-650
<b>Specificity</b>	SFRS15 Polyclonal Antibody detects endogenous levels of SFRS15 protein.
<b>Formulation</b>	Liquid in PBS containing 50% glycerol, 0.5% BSA and 0.02% sodium azide.
<b>Source</b>	Polyclonal, Rabbit,IgG
<b>Purification</b>	The antibody was affinity-purified from rabbit antiserum by affinity-chromatography using epitope-specific immunogen.
<b>Dilution</b>	WB: 1/500 - 1/2000. IHC: 1/100 - 1/300. ELISA: 1/40000.. IF 1:50-200
<b>Concentration</b>	1 mg/ml
<b>Purity</b>	≥90%
<b>Storage Stability</b>	-20°C/1 year
<b>Synonyms</b>	SCAF4; KIAA1172; SFRS15; Splicing factor; arginine/serine-rich 15; CTD-binding SR-like protein RA4; SR-related and CTD-associated factor 4
<b>Observed Band</b>	140kD
<b>Cell Pathway</b>	Nucleus .
<b>Tissue Specificity</b>	Brain,Epithelium,Melanoma,Pancreas,Testis,Uterus,
<b>Function</b>	function:May act to physically and functionally link transcription and pre-mRNA processing.,similarity:Belongs to the splicing factor SR family.,similarity:Contains 1 CID domain.,similarity:Contains 1 RRM (RNA recognition motif) domain.,subunit:Interacts with the repetitive C-terminal domain (CTD) of RNA polymerase II.,
<b>Background</b>	This gene likely encodes a member of the arginine/serine-rich splicing factor family. A similar protein in Rat appears to bind the large subunit of RNA polymerase II and provide a link between transcription and pre-mRNA splicing. Alternatively spliced transcript variants have been described. [provided by RefSeq, Feb 2009],

**Nanjing BYabs science technology Co.,Ltd**



**matters needing attention**

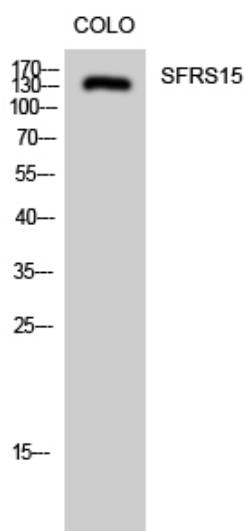
Avoid repeated freezing and thawing!

**Usage suggestions**

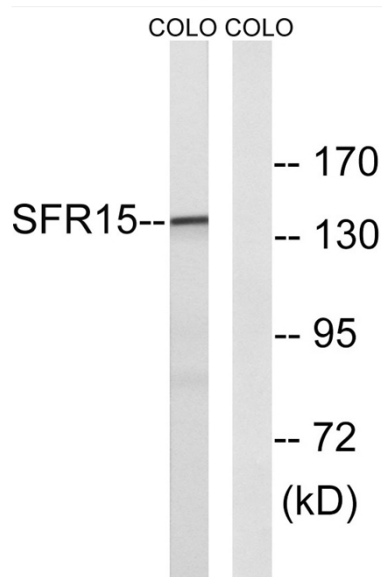
This product can be used in immunological reaction related experiments. For more information, please consult technical personnel.



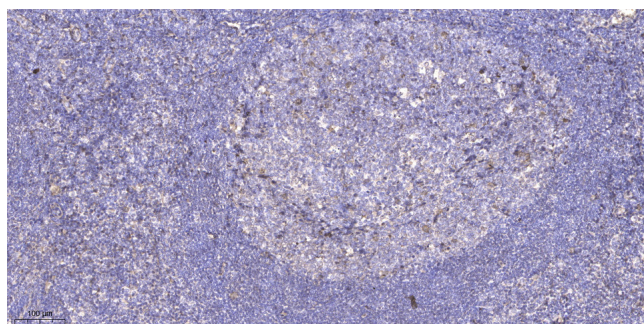
## Products Images



Western Blot analysis of COLO cells using SFRS15 Polyclonal Antibody diluted at 1:2000 cells nucleus extracted by Minute TM Cytoplasmic and Nuclear Fractionation kit (SC-003, Invent biotech, MN, USA).



Western blot analysis of lysates from COLO cells, using SFRS15 Antibody. The lane on the right is blocked with the synthesized peptide.



Immunohistochemical analysis of paraffin-embedded human tonsil. 1, Antibody was diluted at 1:200 (4° overnight). 2, Tris-EDTA, pH 9.0 was used for antigen retrieval. 3, Secondary antibody was diluted at 1:200 (room temperature, 45 min).

**Nanjing BYabs science technology Co., Ltd**

网址: [www.njbybio.com](http://www.njbybio.com)

官方热线: 025-5229-8998

监督电话: 15950492658