



# SLU7 Polyclonal Antibody

<b>Catalog No</b>	BYab-02013
<b>Isotype</b>	IgG
<b>Reactivity</b>	Human;Mouse;Rat
<b>Applications</b>	WB;IHC
<b>Gene Name</b>	SLU7
<b>Protein Name</b>	Pre-mRNA-splicing factor SLU7
<b>Immunogen</b>	The antiserum was produced against synthesized peptide derived from human SLU7. AA range:113-162
<b>Specificity</b>	SLU7 Polyclonal Antibody detects endogenous levels of SLU7 protein.
<b>Formulation</b>	Liquid in PBS containing 50% glycerol, 0.5% BSA and 0.02% sodium azide.
<b>Source</b>	Polyclonal, Rabbit,IgG
<b>Purification</b>	The antibody was affinity-purified from rabbit antiserum by affinity-chromatography using epitope-specific immunogen.
<b>Dilution</b>	WB 1:500-2000;IHC-p 1:50-300
<b>Concentration</b>	1 mg/ml
<b>Purity</b>	≥90%
<b>Storage Stability</b>	-20°C/1 year
<b>Synonyms</b>	SLU7; Pre-mRNA-splicing factor SLU7; hSlu7
<b>Observed Band</b>	65kD
<b>Cell Pathway</b>	Nucleus . Nucleus speckle . Cytoplasm . Predominantly nuclear. Shuttling between the nucleus and the cytoplasm is regulated by the CCHC-type zinc finger. Upon UV-C stress stimulus, the nuclear concentration of the protein decreases, affecting alternative splicing. Translocates from the nucleus to the cytoplasm after heat shock cell treatment. Accumulates in cytoplasmic vesicle-like organelles after heat shock treatment, which may represent stress granules. .
<b>Tissue Specificity</b>	Colon,Epithelium,Eye,
<b>Function</b>	domain:The CCHC-type zinc finger is required to retain the protein within the nucleus and prevent its shuttle back to the cytoplasm via the CRM1 pathway.,function:Participates in the second catalytic step of pre-mRNA splicing, when the free hydroxyl group of exon I attacks the 3'-splice site to generate spliced mRNA and the excised lariat intron. Required for holding exon 1 properly in the spliceosome and for correct AG identification when more than one possible AG exists in 3'-splicing site region. May be involved in the activation of proximal

**Nanjing BYabscience technology Co.,Ltd**



	AG. Probably also involved in alternative splicing regulation.,similarity:Belongs to the SLU7 family.,similarity:Contains 1 CCHC-type zinc finger.,subcellular location:Predominantly nuclear. Shuttling between the nucleus and the cytoplasm is regulated by the CCHC-type zinc finger. Upon UV-C stress stimulus, the nuclear concentration of the protein
Background	Pre-mRNA splicing occurs in two sequential transesterification steps. The protein encoded by this gene is a splicing factor that has been found to be essential during the second catalytic step in the pre-mRNA splicing process. It associates with the spliceosome and contains a zinc knuckle motif that is found in other splicing factors and is involved in protein-nucleic acid and protein-protein interactions. [provided by RefSeq, Jul 2008],
matters needing attention	Avoid repeated freezing and thawing!
Usage suggestions	This product can be used in immunological reaction related experiments. For more information, please consult technical personnel.

Nanjing BYabscience technology Co.,Ltd

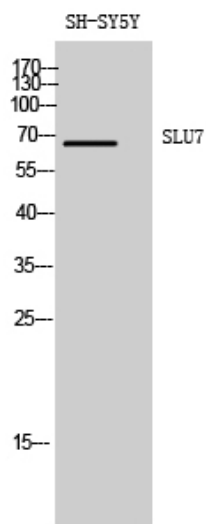
网址: [www.njbybio.com](http://www.njbybio.com)

官方热线: 025-5229-8998

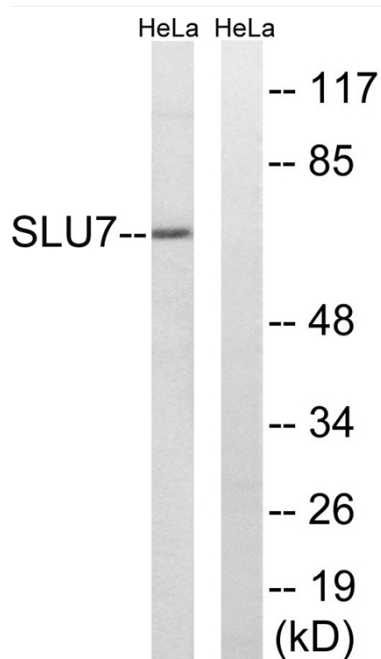
监督电话: 15950492658



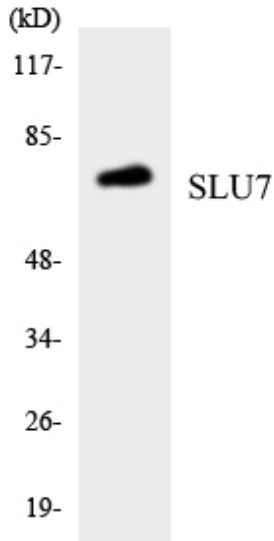
## Products Images



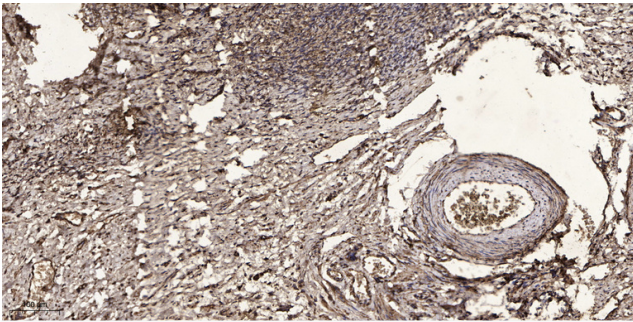
Western Blot analysis of SH-SY5Y cells using SLU7 Polyclonal Antibody diluted at 1:1000



Western blot analysis of lysates from HeLa cells, using SLU7 Antibody. The lane on the right is blocked with the synthesized peptide.



Western blot analysis of the lysates from HepG2 cells using SLU7 antibody.



Immunohistochemical analysis of paraffin-embedded human oophoroma. 1, Antibody was diluted at 1:200(4° overnight). 2, Tris-EDTA,pH9.0 was used for antigen retrieval. 3,Secondary antibody was diluted at 1:200(room temperature, 45min).