



# Sox-6 Polyclonal Antibody

Catalog No	BYab-02030
Isotype	IgG
Reactivity	Human;Mouse;Rat;Monkey
Applications	WB;IHC;IF;ELISA
Gene Name	SOX6
Protein Name	Transcription factor SOX-6
Immunogen	The antiserum was produced against synthesized peptide derived from human SOX6. AA range:10-59
Specificity	Sox-6 Polyclonal Antibody detects endogenous levels of Sox-6 protein.
Formulation	Liquid in PBS containing 50% glycerol, 0.5% BSA and 0.02% sodium azide.
Source	Polyclonal, Rabbit,IgG
Purification	The antibody was affinity-purified from rabbit antiserum by affinity-chromatography using epitope-specific immunogen.
Dilution	WB: 1/500 - 1/2000. IHC: 1/100 - 1/300. ELISA: 1/5000.. IF 1:50-200
Concentration	1 mg/ml
Purity	≥90%
Storage Stability	-20°C/1 year
Synonyms	SOX6; Transcription factor SOX-6
Observed Band	91kD
Cell Pathway	Nucleus . Cytoplasm .
Tissue Specificity	Expressed in a wide variety of tissues, most abundantly in skeletal musclen.
Function	function:Transcriptional activator. Binds specifically to the DNA sequence 5'-AACAAAT-3'. Plays a key role in several developmental processes, including neurogenesis and skeleton formation.,PTM:Sumoylation inhibits the transcriptional activity.,similarity:Contains 1 HMG box DNA-binding domain.,subunit:Interacts with DAZAP2.,tissue specificity:Expressed in a wide variety of tissues, most abundantly in skeletal muscle.,
Background	SRY-box 6(SOX6) Homo sapiens This gene encodes a member of the D subfamily of sex determining region y-related transcription factors that are characterized by a conserved DNA-binding domain termed the high mobility group box and by their ability to bind the minor groove of DNA. The encoded protein is a

Nanjing BYabscience technology Co.,Ltd



transcriptional activator that is required for normal development of the central nervous system, chondrogenesis and maintenance of cardiac and skeletal muscle cells. The encoded protein interacts with other family members to cooperatively activate gene expression. Alternative splicing results in multiple transcript variants.[provided by RefSeq, Mar 2009],

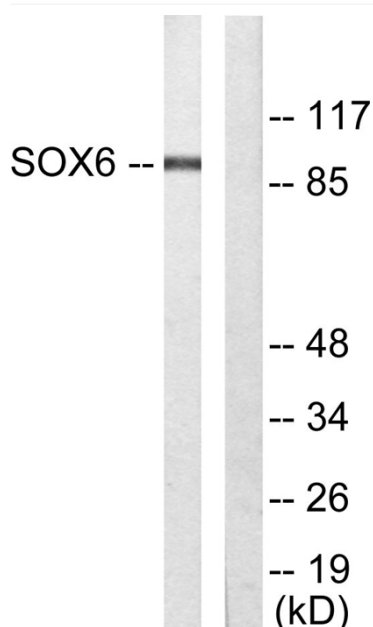
**matters needing attention**

Avoid repeated freezing and thawing!

**Usage suggestions**

This product can be used in immunological reaction related experiments. For more information, please consult technical personnel.

## Products Images



Western blot analysis of lysates from Jurkat cells, using SOX6 Antibody. The lane on the right is blocked with the synthesized peptide.



Immunohistochemical analysis of paraffin-embedded human tonsil. 1, Tris-EDTA, pH9.0 was used for antigen retrieval. 2 Antibody was diluted at 1:200(4° overnight). 3, Secondary antibody was diluted at 1:200(room temperature, 45min).

**Nanjing BYabs science technology Co.,Ltd**

网址: [www.njbybio.com](http://www.njbybio.com)

官方热线: 025-5229-8998

监督电话: 15950492658