



# SRp46 Polyclonal Antibody

<b>Catalog No</b>	BYab-02045
<b>Isotype</b>	IgG
<b>Reactivity</b>	Human;Rat;Mouse;
<b>Applications</b>	WB;IHC;IF;ELISA
<b>Gene Name</b>	SRSF8
<b>Protein Name</b>	Serine/arginine-rich splicing factor 8
<b>Immunogen</b>	The antiserum was produced against synthesized peptide derived from human SFRS2B. AA range:31-80
<b>Specificity</b>	SRp46 Polyclonal Antibody detects endogenous levels of SRp46 protein.
<b>Formulation</b>	Liquid in PBS containing 50% glycerol, 0.5% BSA and 0.02% sodium azide.
<b>Source</b>	Polyclonal, Rabbit,IgG
<b>Purification</b>	The antibody was affinity-purified from rabbit antiserum by affinity-chromatography using epitope-specific immunogen.
<b>Dilution</b>	WB: 1/500 - 1/2000. IHC: 1/100 - 1/300. ELISA: 1/40000.. IF 1:50-200
<b>Concentration</b>	1 mg/ml
<b>Purity</b>	≥90%
<b>Storage Stability</b>	-20°C/1 year
<b>Synonyms</b>	SRSF8; SFRS2B; SRP46; Serine/arginine-rich splicing factor 8; Pre-mRNA-splicing factor SRP46; Splicing factor SRp46; Splicing factor; arginine/serine-rich 2B
<b>Observed Band</b>	32kD
<b>Cell Pathway</b>	Nucleus .
<b>Tissue Specificity</b>	Strongly expressed in pancreas, spleen and prostate. Weakly expressed in lung, liver and thymus.
<b>Function</b>	function:Involved in pre-mRNA alternative splicing.,PTM:Phosphorylated.,similarity:Belongs to the splicing factor SR family.,similarity:Contains 1 RRM (RNA recognition motif) domain.,tissue specificity:Strongly expressed in pancreas, spleen and prostate. Weakly expressed in lung, liver and thymus.,
<b>Background</b>	This gene encodes a member of a family of proteins containing a ribonucleoprotein (RNP)-type RNA binding motif and a carboxyl-terminal arginine-serine-rich (RS) domain. The encoded protein functions as a pre-mRNA

**Nanjing BYabscience technology Co.,Ltd**



splicing factor. There is a pseudogene for this gene on chromosome 7. Alternative splicing results in multiple transcript variants. [provided by RefSeq, Jun 2013],

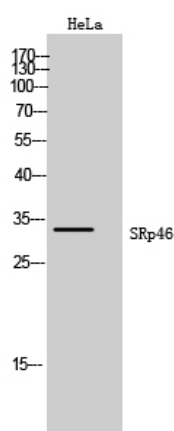
#### matters needing attention

Avoid repeated freezing and thawing!

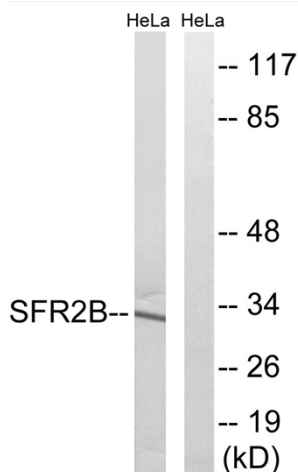
#### Usage suggestions

This product can be used in immunological reaction related experiments. For more information, please consult technical personnel.

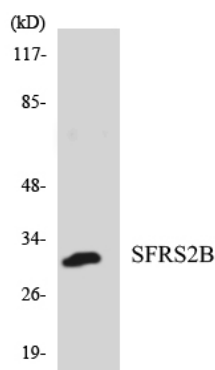
## Products Images



Western Blot analysis of HeLa cells using SRp46 Polyclonal Antibody cells nucleus extracted by Minute TM Cytoplasmic and Nuclear Fractionation kit (SC-003, Inventbiotech, MN, USA).

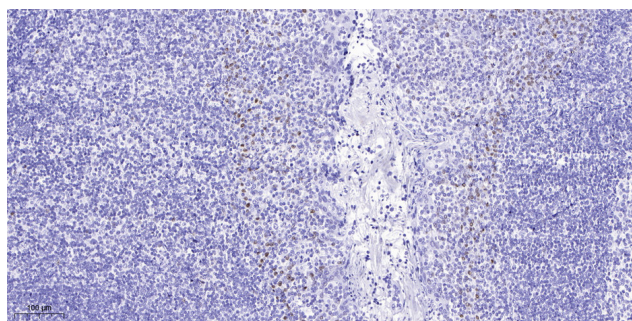


Western blot analysis of lysates from HeLa cells, using SFRS2B Antibody. The lane on the right is blocked with the synthesized peptide.



Western blot analysis of the lysates from HepG2 cells using SFRS2B antibody.

**Nanjing BYabscience technology Co.,Ltd**



Immunohistochemical analysis of paraffin-embedded human tonsil. 1, Antibody was diluted at 1:200(4° overnight). 2, Tris-EDTA,pH9.0 was used for antigen retrieval. 3,Secondary antibody was diluted at 1:200(room temperature, 45min).