



SUHW1 Polyclonal Antibody

Catalog No	BYab-02059
Isotype	IgG
Reactivity	Human;Rat;Mouse;
Applications	WB;IHC
Gene Name	ZNF280A
Protein Name	Zinc finger protein 280A
Immunogen	The antiserum was produced against synthesized peptide derived from human ZNF280A. AA range:441-490
Specificity	SUHW1 Polyclonal Antibody detects endogenous levels of SUHW1 protein.
Formulation	Liquid in PBS containing 50% glycerol, 0.5% BSA and 0.02% sodium azide.
Source	Polyclonal, Rabbit,IgG
Purification	The antibody was affinity-purified from rabbit antiserum by affinity-chromatography using epitope-specific immunogen.
Dilution	WB 1:500-2000;IHC-p 1:50-300
Concentration	1 mg/ml
Purity	≥90%
Storage Stability	-20°C/1 year
Synonyms	ZNF280A; SUHW1; ZNF280; ZNF636; Zinc finger protein 280A; 3'OY11.1; Suppressor of hairy wing homolog 1; Zinc finger protein 636
Observed Band	50kD
Cell Pathway	Nucleus .
Tissue Specificity	Melanoma,Testis,
Function	function:May function as a transcription factor.,similarity:Contains 4 C2H2-type zinc fingers.,
Background	This gene encodes a zinc finger protein. The encoded protein contains 4 C2H2-type zinc fingers, which are commonly found in transcription factors. A variety of functions may be performed by this type of zinc finger protein, including the binding of DNA or RNA. [provided by RefSeq, Apr 2014],
matters needing attention	Avoid repeated freezing and thawing!

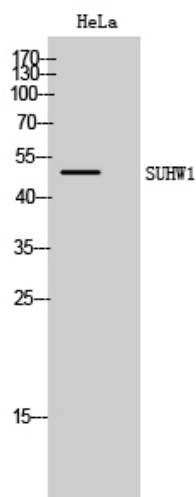
Nanjing BYabscience technology Co.,Ltd



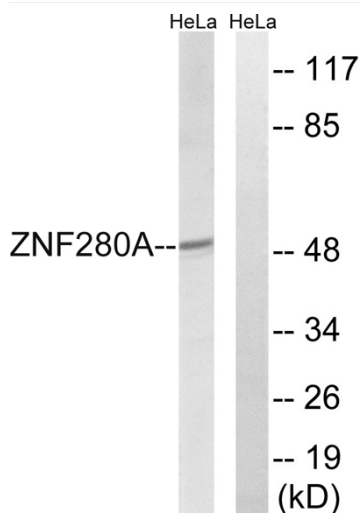
Usage suggestions

This product can be used in immunological reaction related experiments. For more information, please consult technical personnel.

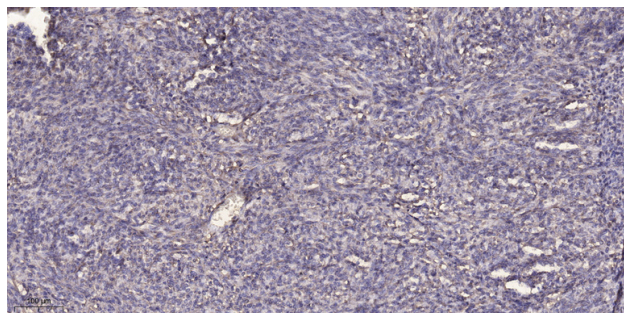
Products Images



Western Blot analysis of HeLa cells using SUHW1 Polyclonal Antibody cells nucleus extracted by Minute TM Cytoplasmic and Nuclear Fractionation kit (SC-003, Inventbiotech, MN, USA).



Western blot analysis of lysates from HeLa cells, using ZNF280A Antibody. The lane on the right is blocked with the synthesized peptide.



Immunohistochemical analysis of paraffin-embedded human Colon cancer. 1, Antibody was diluted at 1:200(4° overnight). 2, Tris-EDTA, pH9.0 was used for antigen retrieval. 3, Secondary antibody was diluted at 1:200(room temperature, 45min).

Nanjing BYabs science technology Co.,Ltd

网址: www.njbybio.com

官方热线: 025-5229-8998

监督电话: 15950492658