



TAF5L Polyclonal Antibody

Catalog No	BYab-02071
Isotype	IgG
Reactivity	Human;Monkey
Applications	WB;IHC;IF;ELISA
Gene Name	TAF5L
Protein Name	TAF5-like RNA polymerase II p300/CBP-associated factor-associated factor 65 kDa subunit 5L
Immunogen	The antiserum was produced against synthesized peptide derived from human TAF5L. AA range:291-340
Specificity	TAF5L Polyclonal Antibody detects endogenous levels of TAF5L protein.
Formulation	Liquid in PBS containing 50% glycerol, 0.5% BSA and 0.02% sodium azide.
Source	Polyclonal, Rabbit,IgG
Purification	The antibody was affinity-purified from rabbit antiserum by affinity-chromatography using epitope-specific immunogen.
Dilution	WB: 1/500 - 1/2000. IHC: 1/100 - 1/300. ELISA: 1/10000.. IF 1:50-200
Concentration	1 mg/ml
Purity	≥90%
Storage Stability	-20°C/1 year
Synonyms	TAF5L; PAF65B; TAF5-like RNA polymerase II p300/CBP-associated factor-associated factor 65 kDa subunit 5L; PCAF-associated factor 65 beta; PAF65-beta
Observed Band	66kD
Cell Pathway	Nucleus .
Tissue Specificity	Brain, Eye,
Function	function:Functions as a component of the PCAF complex. The PCAF complex is capable of efficiently acetylating histones in a nucleosomal context. The PCAF complex could be considered as the human version of the yeast SAGA complex.,similarity:Belongs to the WD repeat TAF5 family.,similarity:Contains 6 WD repeats.,subunit:The PCAF complex is composed of a number of TBP-associated factors (TAFs), such as TAF5, TAF5L, TAF6, TAF6L, TAF9, TAF10 and TAF12, PCAF, and also PCAF-associated factors (PAFs), such as TADA2L/ADA2, TADA3L/ADA3 and SPT3. Component of the STAGA transcription coactivator-HAT complex, at least composed of SUPT3H, GCN5L2,

Nanjing BYabscience technology Co.,Ltd



TAF5L, TAF6L, SUPT7L, TADA3L, TAD1L, TAF10, TAF12, TRRAP and TAF9.,

Background

The product of this gene belongs to the WD-repeat TAF5 family of proteins. This gene encodes a protein that is a component of the PCAF histone acetylase complex. The PCAF histone acetylase complex, which is composed of more than 20 polypeptides some of which are TAFs, is required for myogenic transcription and differentiation. TAFs may participate in basal transcription, serve as coactivators, function in promoter recognition or modify general transcription factors to facilitate complex assembly and transcription initiation. The encoded protein is structurally similar to one of the histone-like TAFs, TAF5. Alternatively spliced transcript variants encoding different isoforms have been identified for this gene. [provided by RefSeq, Jul 2008],

matters needing attention

Avoid repeated freezing and thawing!

Usage suggestions

This product can be used in immunological reaction related experiments. For more information, please consult technical personnel.

Nanjing BYabscience technology Co.,Ltd

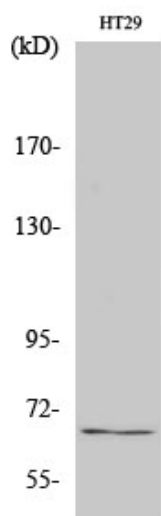
网址: www.njbybio.com

官方热线: 025-5229-8998

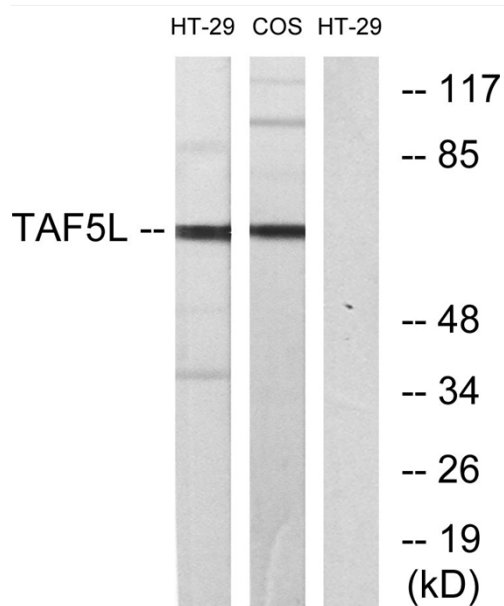
监督电话: 15950492658



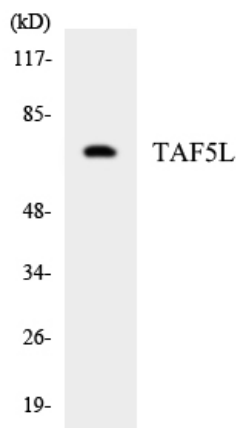
Products Images



Western Blot analysis of various cells using TAF5L Polyclonal Antibody cells nucleus extracted by Minute TM Cytoplasmic and Nuclear Fractionation kit (SC-003, Invent biotech, MN, USA).



Western blot analysis of lysates from HT-29 and COS7 cells, using TAF5L Antibody. The lane on the right is blocked with the synthesized peptide.



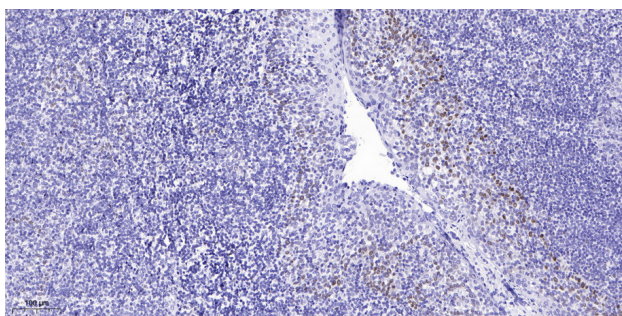
Western blot analysis of the lysates from HepG2 cells using TAF5L antibody.

Nanjing BYabs science technology Co.,Ltd

网址: www.njbybio.com

官方热线: 025-5229-8998

监督电话: 15950492658



Immunohistochemical analysis of paraffin-embedded human tonsil. 1, Antibody was diluted at 1:200(4° overnight). 2, Tris-EDTA,pH9.0 was used for antigen retrieval. 3,Secondary antibody was diluted at 1:200(room temperature, 45min).