



TFIIA-α Polyclonal Antibody

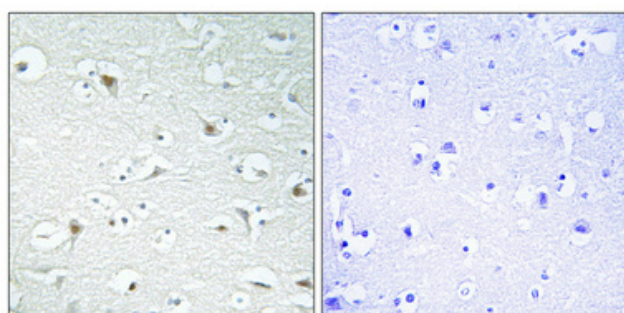
Catalog No	BYab-02103
Isotype	IgG
Reactivity	Human;Mouse;Rat
Applications	WB;IHC;IF;ELISA
Gene Name	GTF2A1
Protein Name	Transcription initiation factor IIA subunit 1
Immunogen	The antiserum was produced against synthesized peptide derived from human TF2A1. AA range:281-330
Specificity	TFIIA-α Polyclonal Antibody detects endogenous levels of TFIIA-α protein.
Formulation	Liquid in PBS containing 50% glycerol, 0.5% BSA and 0.02% sodium azide.
Source	Polyclonal, Rabbit,IgG
Purification	The antibody was affinity-purified from rabbit antiserum by affinity-chromatography using epitope-specific immunogen.
Dilution	WB: 1/500 - 1/2000. IHC: 1/100 - 1/300. ELISA: 1/40000.. IF 1:50-200
Concentration	1 mg/ml
Purity	≥90%
Storage Stability	-20°C/1 year
Synonyms	GTF2A1; TF2A1; Transcription initiation factor IIA subunit 1; General transcription factor IIA subunit 1; TFIIAL; Transcription initiation factor TFIIA 42 kDa subunit; TFIIA-42
Observed Band	42kD
Cell Pathway	Nucleus.
Tissue Specificity	Epithelium,
Function	function:TFIIA is a component of the transcription machinery of RNA polymerase II and plays an important role in transcriptional activation. TFIIA in a complex with TBP mediates transcriptional activity.,PTM:The alpha and beta subunits are postranslationally produced from the precursor form by TASP1. The cleavage promotes proteosomal degradation.,similarity:Belongs to the TFIIA subunit 1 family.,subunit:TFIIA is a heterodimer of the large unprocessed subunit 1 and a small subunit gamma. It was originally believed to be a heterotrimer of an alpha (p35), a beta (p19) and a gamma subunit (p12). TFIIA forms a complex with TBP.,

Nanjing BYabs science technology Co.,Ltd

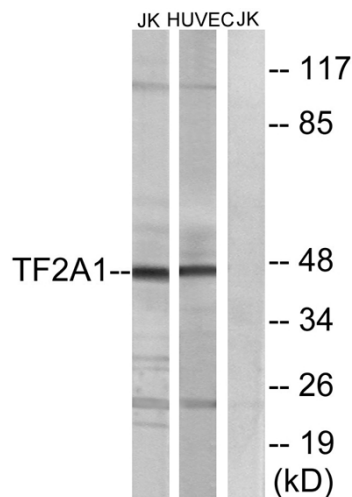


Background	Accurate transcription initiation on TATA-containing class II genes involves the ordered assembly of RNA polymerase II (POLR2A; MIM 180660) and several general initiation factors (summarized by DeJong and Roeder, 1993 [PubMed 8224848]). One of these factors is TFIIA, which when purified from HeLa extracts consists of 35-, 19-, and 12-kD subunits.[supplied by OMIM, Jul 2010],
matters needing attention	Avoid repeated freezing and thawing!
Usage suggestions	This product can be used in immunological reaction related experiments. For more information, please consult technical personnel.

Products Images



Immunohistochemical analysis of paraffin-embedded Human brain. Antibody was diluted at 1:100(4° overnight). High-pressure and temperature Tris-EDTA,pH8.0 was used for antigen retrieval. Negative contrl (right) obtained from antibody was pre-absorbed by immunogen peptide.



Western blot analysis of lysates from Jurkat and HUVEC cells, using TF2A1 Antibody. The lane on the right is blocked with the synthesized peptide.