



TLE4 Polyclonal Antibody

Catalog No	BYab-02122
Isotype	IgG
Reactivity	Human;Mouse;Rat
Applications	WB;IHC;IF;ELISA
Gene Name	TLE4
Protein Name	Transducin-like enhancer protein 4
Immunogen	The antiserum was produced against synthesized peptide derived from human TLE4. AA range:161-210
Specificity	TLE4 Polyclonal Antibody detects endogenous levels of TLE4 protein.
Formulation	Liquid in PBS containing 50% glycerol, 0.5% BSA and 0.02% sodium azide.
Source	Polyclonal, Rabbit,IgG
Purification	The antibody was affinity-purified from rabbit antiserum by affinity-chromatography using epitope-specific immunogen.
Dilution	WB: 1/500 - 1/2000. IHC: 1/100 - 1/300. ELISA: 1/20000.. IF 1:50-200
Concentration	1 mg/ml
Purity	≥90%
Storage Stability	-20°C/1 year
Synonyms	TLE4; KIAA1261; Transducin-like enhancer protein 4
Observed Band	83kD
Cell Pathway	Nucleus.
Tissue Specificity	In all tissues examined, mostly in brain, and muscle.
Function	caution:Product of a dubious CDS prediction. Found in the 3'UTR of TLE4. No homolog. Large scale identification of a phosphorylated peptide (PubMed:15302935) would require further confirmation.,function:Transcriptional corepressor that binds to a number of transcription factors. Inhibits the transcriptional activation mediated by PAX5, and by CTNNB1 and TCF family members in Wnt signaling. The effects of full-length TLE family members may be modulated by association with dominant-negative AES.,similarity:Belongs to the WD repeat Groucho/TLE family.,similarity:Contains 7 WD repeats.,subunit:Homooligomer and heterooligomer with other family members. Binds PAX5, LEF1, TCF7, TCF7L1 and TCF7L2.,tissue specificity:In all tissues examined, mostly in brain, and muscle.,

Nanjing BYabscience technology Co.,Ltd

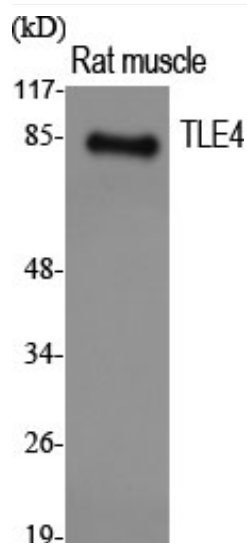


Background	caution:Product of a dubious CDS prediction. Found in the 3'UTR of TLE4. No homolog. Large scale identification of a phosphorylated peptide (PubMed:15302935) would require further confirmation.,function:Transcriptional corepressor that binds to a number of transcription factors. Inhibits the transcriptional activation mediated by PAX5, and by CTNNB1 and TCF family members in Wnt signaling. The effects of full-length TLE family members may be modulated by association with dominant-negative AES.,similarity:Belongs to the WD repeat Groucho/TLE family.,similarity:Contains 7 WD repeats.,subunit:Homooligomer and heterooligomer with other family members. Binds PAX5, LEF1, TCF7, TCF7L1 and TCF7L2.,tissue specificity:In all tissues examined, mostly in brain, and muscle.,
matters needing attention	Avoid repeated freezing and thawing!
Usage suggestions	This product can be used in immunological reaction related experiments. For more information, please consult technical personnel.

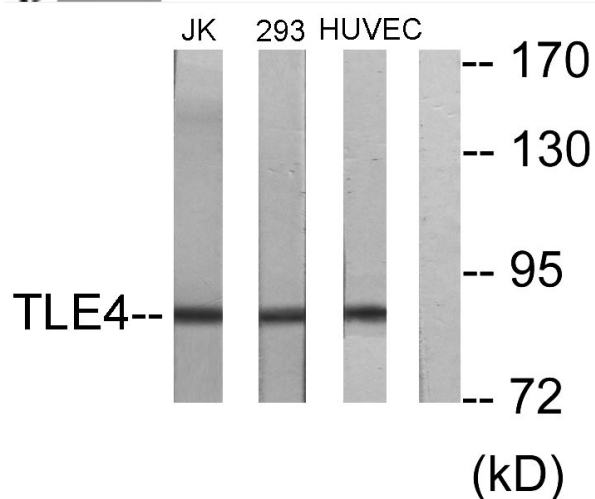
Nanjing BYabscience technology Co.,Ltd



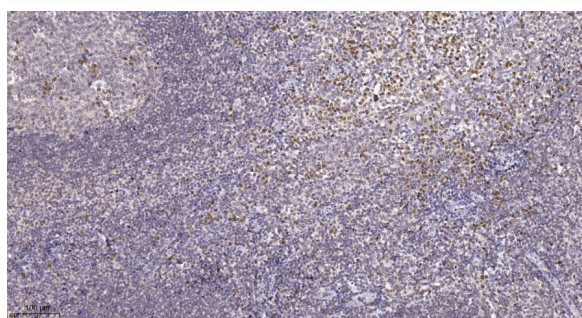
Products Images



Western Blot analysis of various cells using TLE4 Polyclonal Antibody. Secondary antibody(catalog#:RS0002) was diluted at 1:20000 cells nucleus extracted by Minute TM Cytoplasmic and Nuclear Fractionation kit (SC-003, Invent biotech, MN, USA).



Western blot analysis of lysates from Jurkat, 293, and HUVEC cells, using TLE4 Antibody. The lane on the right is blocked with the synthesized peptide.



Immunohistochemical analysis of paraffin-embedded human tonsil. 1, Tris-EDTA, pH 9.0 was used for antigen retrieval. 2 Antibody was diluted at 1:200 (4° overnight). 3, Secondary antibody was diluted at 1:200 (room temperature, 45 min).