



ZBTB40 Polyclonal Antibody

Catalog No	BYab-02163
Isotype	IgG
Reactivity	Human;Mouse
Applications	WB;IHC;IF;ELISA
Gene Name	ZBTB40
Protein Name	Zinc finger and BTB domain-containing protein 40
Immunogen	The antiserum was produced against synthesized peptide derived from human ZBTB40. AA range:1121-1170
Specificity	ZBTB40 Polyclonal Antibody detects endogenous levels of ZBTB40 protein.
Formulation	Liquid in PBS containing 50% glycerol, 0.5% BSA and 0.02% sodium azide.
Source	Polyclonal, Rabbit,IgG
Purification	The antibody was affinity-purified from rabbit antiserum by affinity-chromatography using epitope-specific immunogen.
Dilution	WB: 1/500 - 1/2000. IHC: 1/100 - 1/300. ELISA: 1/10000.. IF 1:50-200
Concentration	1 mg/ml
Purity	≥90%
Storage Stability	-20°C/1 year
Synonyms	ZBTB40; KIAA0478; Zinc finger and BTB domain-containing protein 40
Observed Band	140kD
Cell Pathway	Nucleus .
Tissue Specificity	Brain,Epithelium,PCR rescued clones,Tongue,
Function	function:May be involved in transcriptional regulation.,PTM:Phosphorylated upon DNA damage, probably by ATM or ATR.,similarity:Belongs to the krueppel C2H2-type zinc-finger protein family.,similarity:Contains 1 BTB (POZ) domain.,similarity:Contains 12 C2H2-type zinc fingers.,
Background	function:May be involved in transcriptional regulation.,PTM:Phosphorylated upon DNA damage, probably by ATM or ATR.,similarity:Belongs to the krueppel C2H2-type zinc-finger protein family.,similarity:Contains 1 BTB (POZ) domain.,similarity:Contains 12 C2H2-type zinc fingers.,

Nanjing BYabscience technology Co.,Ltd



matters needing attention

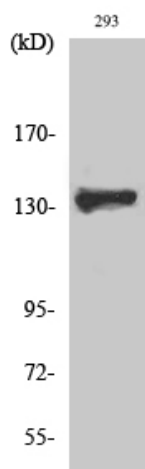
Avoid repeated freezing and thawing!

Usage suggestions

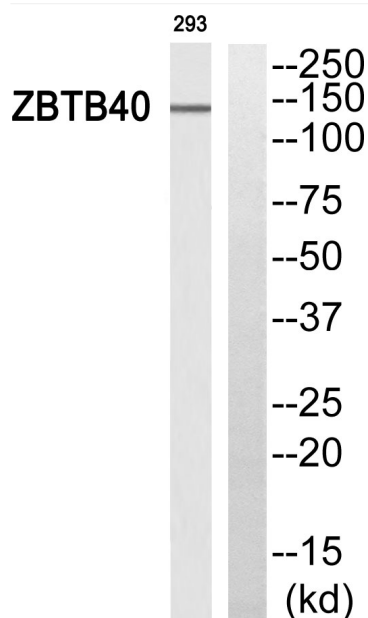
This product can be used in immunological reaction related experiments. For more information, please consult technical personnel.



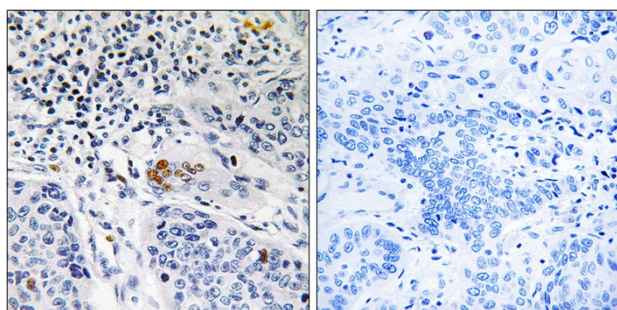
Products Images



Western Blot analysis of various cells using ZBTB40 Polyclonal Antibody. Secondary antibody(catalog#:RS0002) was diluted at 1:20000 cells nucleus extracted by Minute TM Cytoplasmic and Nuclear Fractionation kit (SC-003, Invent biotech, MN, USA).



Western blot analysis of ZBTB40 Antibody. The lane on the right is blocked with the ZBTB40 peptide.



Immunohistochemistry analysis of paraffin-embedded human lung carcinoma tissue, using ZBTB40 Antibody. The picture on the right is blocked with the synthesized peptide.

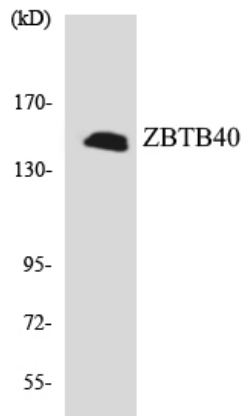
ERROR 42

Nanjing BYabs science technology Co.,Ltd

网址: www.njbybio.com

官方热线: 025-5229-8998

监督电话: 15950492658



Western blot analysis of the lysates from HUVEC cells using ZBTB40 antibody.