



ZC3H11A Polyclonal Antibody

Catalog No	BYab-02164
Isotype	IgG
Reactivity	Human;Monkey
Applications	WB;ELISA
Gene Name	ZC3H11A
Protein Name	Zinc finger CCCH domain-containing protein 11A
Immunogen	The antiserum was produced against synthesized peptide derived from human ZC3H11A. AA range:291-340
Specificity	ZC3H11A Polyclonal Antibody detects endogenous levels of ZC3H11A protein.
Formulation	Liquid in PBS containing 50% glycerol, 0.5% BSA and 0.02% sodium azide.
Source	Polyclonal, Rabbit,IgG
Purification	The antibody was affinity-purified from rabbit antiserum by affinity-chromatography using epitope-specific immunogen.
Dilution	Western Blot: 1/500 - 1/2000. ELISA: 1/20000. Not yet tested in other applications.
Concentration	1 mg/ml
Purity	≥90%
Storage Stability	-20°C/1 year
Synonyms	ZC3H11A; KIAA0663; ZC3HDC11A; Zinc finger CCCH domain-containing protein 11A
Observed Band	110kD
Cell Pathway	Nucleus .
Tissue Specificity	Brain,Epithelium,Fetal kidney,Kidney,Placenta,Retina,
Function	PTM:Phosphorylated upon DNA damage, probably by ATM or ATR.,sequence caution:Contaminating sequence. Potential poly-A sequence.,similarity:Contains 3 C3H1-type zinc fingers.,
Background	PTM:Phosphorylated upon DNA damage, probably by ATM or ATR.,sequence caution:Contaminating sequence. Potential poly-A sequence.,similarity:Contains 3 C3H1-type zinc fingers.,
matters needing attention	Avoid repeated freezing and thawing!

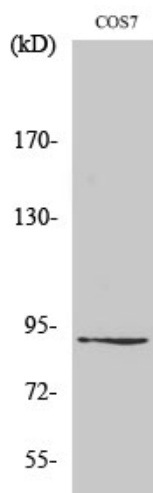
Nanjing BYabscience technology Co.,Ltd



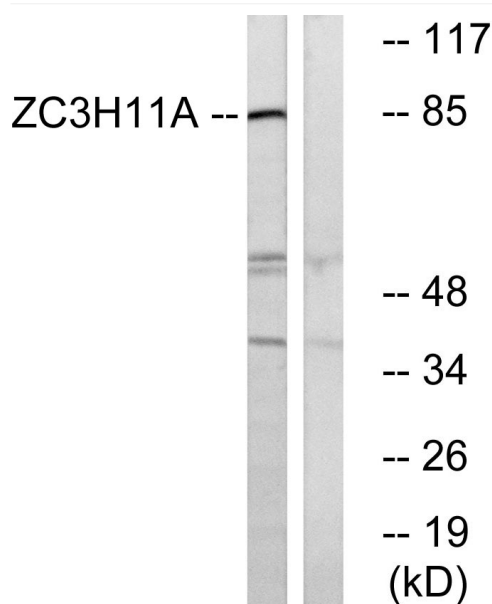
Usage suggestions

This product can be used in immunological reaction related experiments. For more information, please consult technical personnel.

Products Images



Western Blot analysis of various cells using ZC3H11A Polyclonal Antibody diluted at 1:1000. Secondary antibody(catalog#:RS0002) was diluted at 1:20000



Western blot analysis of lysates from COS cells, using ZC3H11A Antibody. The lane on the right is blocked with the synthesized peptide.

Nanjing BYabs science technology Co.,Ltd