



ZFYVE19 Polyclonal Antibody

Catalog No	BYab-02170
Isotype	IgG
Reactivity	Human;Rat;Mouse;
Applications	WB;IHC;IF;ELISA
Gene Name	ZFYVE19
Protein Name	Zinc finger FYVE domain-containing protein 19
Immunogen	The antiserum was produced against synthesized peptide derived from human ZFYVE19. AA range:311-360
Specificity	ZFYVE19 Polyclonal Antibody detects endogenous levels of ZFYVE19 protein.
Formulation	Liquid in PBS containing 50% glycerol, 0.5% BSA and 0.02% sodium azide.
Source	Polyclonal, Rabbit,IgG
Purification	The antibody was affinity-purified from rabbit antiserum by affinity-chromatography using epitope-specific immunogen.
Dilution	WB: 1/500 - 1/2000. IHC: 1/100 - 1/300. ELISA: 1/40000.. IF 1:50-200
Concentration	1 mg/ml
Purity	≥90%
Storage Stability	-20°C/1 year
Synonyms	ZFYVE19; MPFYVE; Zinc finger FYVE domain-containing protein 19; MLL partner containing FYVE domain
Observed Band	50kD
Cell Pathway	Cytoplasm, cytoskeleton, microtubule organizing center, centrosome . Cleavage furrow . Midbody, Midbody ring . Localizes mainly on centrosomes in interphase and early mitosis. Localizes at the cleavage furrow and midbody ring in late mitosis and cytokinesis. .
Tissue Specificity	Detected in brain, heart, skeletal muscle, kidney and liver.
Function	disease:A chromosomal aberration involving ZFYVE19 is associated with acute myeloblastic leukemia (AML). Translocation t(11;15)(q23;q14) with MLL/HRX.,PTM:Phosphorylated upon DNA damage, probably by ATM or ATR.,similarity:Contains 1 FYVE-type zinc finger.,tissue specificity:Detected in brain, heart, skeletal muscle, kidney and liver.,
Background	disease:A chromosomal aberration involving ZFYVE19 is associated with acute myeloblastic leukemia (AML). Translocation t(11;15)(q23;q14) with

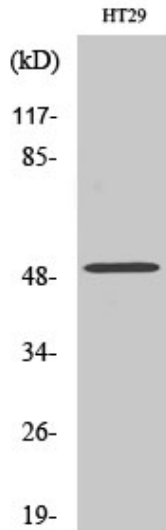
Nanjing BYabscience technology Co.,Ltd



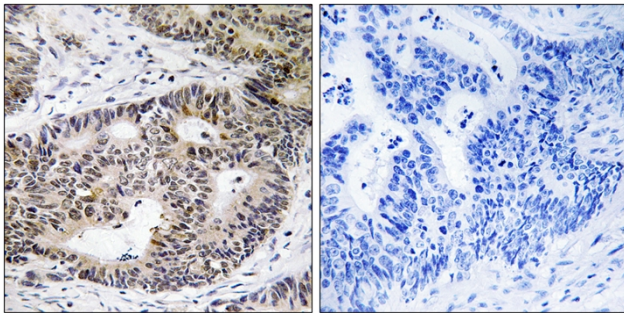
	MLL/HRX.,PTM:Phosphorylated upon DNA damage, probably by ATM or ATR.,similarity:Contains 1 FYVE-type zinc finger.,tissue specificity:Detected in brain, heart, skeletal muscle, kidney and liver.,
matters needing attention	Avoid repeated freezing and thawing!
Usage suggestions	This product can be used in immunological reaction related experiments. For more information, please consult technical personnel.



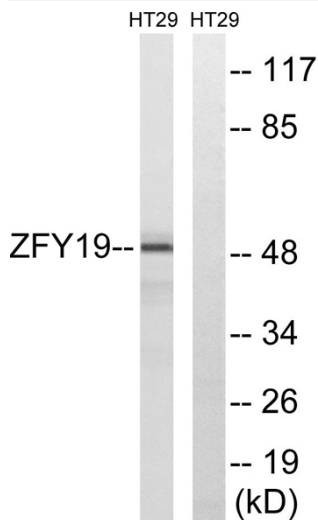
Products Images



Western Blot analysis of various cells using ZFYVE19 Polyclonal Antibody. Secondary antibody(catalog#:RS0002) was diluted at 1:20000



Immunohistochemistry analysis of paraffin-embedded human colon carcinoma tissue, using ZFYVE19 Antibody. The picture on the right is blocked with the synthesized peptide.



Western blot analysis of lysates from HT-29 cells, using ZFYVE19 Antibody. The lane on the right is blocked with the synthesized peptide.

Nanjing BYabscience technology Co.,Ltd

网址: www.njbybio.com

官方热线: 025-5229-8998

监督电话: 15950492658