



# Zhangfei Polyclonal Antibody

<b>Catalog No</b>	BYab-02171
<b>Isotype</b>	IgG
<b>Reactivity</b>	Human;Mouse
<b>Applications</b>	WB;IHC;IF;ELISA
<b>Gene Name</b>	CREBZF
<b>Protein Name</b>	CREB/ATF bZIP transcription factor
<b>Immunogen</b>	The antiserum was produced against synthesized peptide derived from human CREBZF. AA range:221-270
<b>Specificity</b>	Zhangfei Polyclonal Antibody detects endogenous levels of Zhangfei protein.
<b>Formulation</b>	Liquid in PBS containing 50% glycerol, 0.5% BSA and 0.02% sodium azide.
<b>Source</b>	Polyclonal, Rabbit,IgG
<b>Purification</b>	The antibody was affinity-purified from rabbit antiserum by affinity-chromatography using epitope-specific immunogen.
<b>Dilution</b>	Western Blot: 1/500 - 1/2000. Immunohistochemistry: 1/100 - 1/300. Immunofluorescence: 1/200 - 1/1000. ELISA: 1/10000. Not yet tested in other applications.
<b>Concentration</b>	1 mg/ml
<b>Purity</b>	≥90%
<b>Storage Stability</b>	-20°C/1 year
<b>Synonyms</b>	CREBZF; ZF; CREB/ATF bZIP transcription factor; Host cell factor-binding transcription factor Zhangfei; HCF-binding transcription factor Zhangfei
<b>Observed Band</b>	26kD
<b>Cell Pathway</b>	Nucleus . Colocalizes in promyelocytic leukemia protein nuclear bodies (PML-NB) with CREB3 and HCFC1.
<b>Tissue Specificity</b>	In adults, expressed most abundantly in heart, liver and skeletal muscle, moderately abundant in kidney and pancreas, and barely detectable in lung. In fetal tissues, expressed most abundantly in kidney and very low amounts in heart, lung and liver.
<b>Function</b>	function:Strongly activates transcription when bound to HCFC1. Suppresses the expression of HSV proteins in cells infected with the virus in a HCFC1-dependent manner. Also suppresses the HCFC1-dependent transcriptional activation by CREB3 and reduces the amount of CREB3 in the cell. Able to down-regulate expression of some cellular genes in CREBZF-expressing cells.,miscellaneous:Named Zhangfei after a legendary Chinese warrior who was contemporary with Luman in around 220 AD.,similarity:Belongs to the bZIP family.

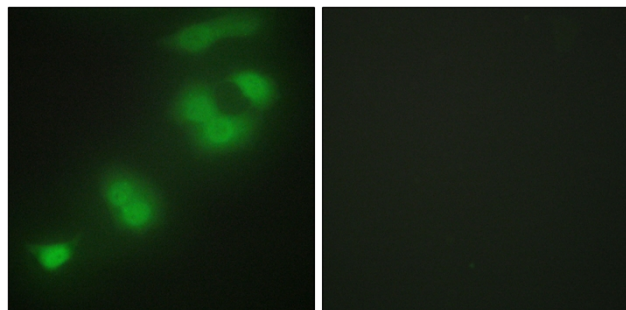
**Nanjing BYabscience technology Co.,Ltd**



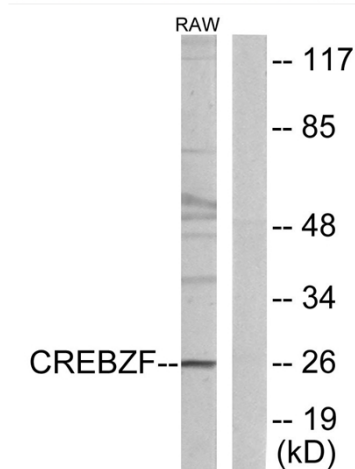
	ATF subfamily.,similarity:Contains 1 bZIP domain.,subcellular location:Colocalizes at punctate nuclear structures with CREB3 and HCFC1.,subunit:Interacts with HCFC1, causing suppression of CREB3 transcriptional activity.,tissue specificity:In adults, expressed most abundantly in heart, liver and skeletal muscle, moderately abundant in kidney and pancreas, and barely detectable
Background	function:Strongly activates transcription when bound to HCFC1. Suppresses the expression of HSV proteins in cells infected with the virus in a HCFC1-dependent manner. Also suppresses the HCFC1-dependent transcriptional activation by CREB3 and reduces the amount of CREB3 in the cell. Able to down-regulate expression of some cellular genes in CREBZF-expressing cells.,miscellaneous:Named Zhangfei after a legendary Chinese warrior who was contemporary with Luman in around 220 AD.,similarity:Belongs to the bZIP family. ATF subfamily.,similarity:Contains 1 bZIP domain.,subcellular location:Colocalizes at punctate nuclear structures with CREB3 and HCFC1.,subunit:Interacts with HCFC1, causing suppression of CREB3 transcriptional activity.,tissue specificity:In adults, expressed most abundantly in heart, liver and skeletal muscle, moderately abundant in kidney and pancreas, and barely detectable in lungs. In fetal tissues, expressed most abundantly in kidney and very low amounts in heart, lung and liver.,
matters needing attention	Avoid repeated freezing and thawing!
Usage suggestions	This product can be used in immunological reaction related experiments. For more information, please consult technical personnel.



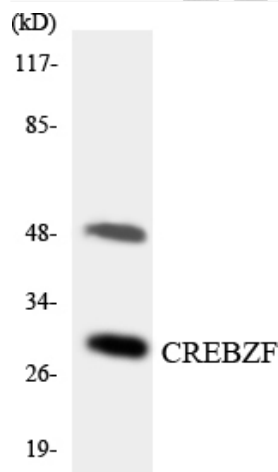
## Products Images



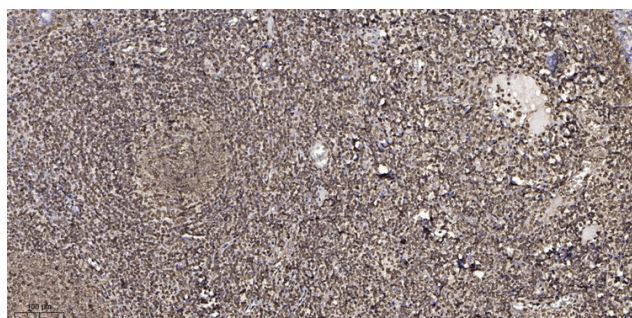
Immunofluorescence analysis of HepG2 cells, using CREBZF Antibody. The picture on the right is blocked with the synthesized peptide.



Western blot analysis of lysates from RAW264.7 cells, using CREBZF Antibody. The lane on the right is blocked with the synthesized peptide.



Western blot analysis of the lysates from COLO205 cells using CREBZF antibody.



Immunohistochemical analysis of paraffin-embedded human tonsil. 1, Tris-EDTA, pH9.0 was used for antigen retrieval. 2 Antibody was diluted at 1:200(4° overnight). 3, Secondary antibody was diluted at 1:200(room temperature, 45min).

**Nanjing BYabs science technology Co.,Ltd**

网址: [www.njbybio.com](http://www.njbybio.com)

官方热线: 025-5229-8998

监督电话: 15950492658