



ZNF668 Polyclonal Antibody

| | |
|----------------------------------|--|
| Catalog No | BYab-02198 |
| Isotype | IgG |
| Reactivity | Human;Mouse |
| Applications | WB;IHC;IF;ELISA |
| Gene Name | ZNF668 |
| Protein Name | Zinc finger protein 668 |
| Immunogen | The antiserum was produced against synthesized peptide derived from human ZNF668. AA range:271-320 |
| Specificity | ZNF668 Polyclonal Antibody detects endogenous levels of ZNF668 protein. |
| Formulation | Liquid in PBS containing 50% glycerol, 0.5% BSA and 0.02% sodium azide. |
| Source | Polyclonal, Rabbit,IgG |
| Purification | The antibody was affinity-purified from rabbit antiserum by affinity-chromatography using epitope-specific immunogen. |
| Dilution | Western Blot: 1/500 - 1/2000. Immunohistochemistry: 1/100 - 1/300. Immunofluorescence: 1/200 - 1/1000. ELISA: 1/10000. Not yet tested in other applications. |
| Concentration | 1 mg/ml |
| Purity | ≥90% |
| Storage Stability | -20°C/1 year |
| Synonyms | ZNF668; Zinc finger protein 668 |
| Observed Band | 68kD |
| Cell Pathway | Nucleus . |
| Tissue Specificity | Brain,Mammary gland,Placenta,Skin, |
| Function | function:May be involved in transcriptional regulation.,similarity:Belongs to the krueppel C2H2-type zinc-finger protein family.,similarity:Contains 16 C2H2-type zinc fingers., |
| Background | function:May be involved in transcriptional regulation.,similarity:Belongs to the krueppel C2H2-type zinc-finger protein family.,similarity:Contains 16 C2H2-type zinc fingers., |
| matters needing attention | Avoid repeated freezing and thawing! |

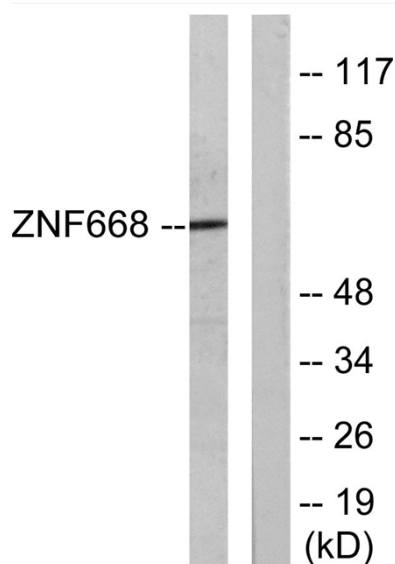
Nanjing BYabscience technology Co.,Ltd



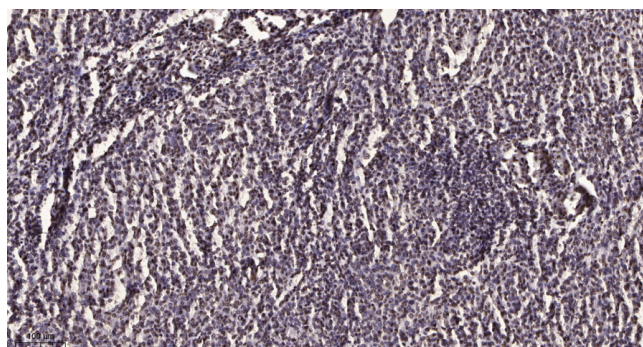
Usage suggestions

This product can be used in immunological reaction related experiments. For more information, please consult technical personnel.

Products Images



Western blot analysis of lysates from Jurkat cells, using ZNF668 Antibody. The lane on the right is blocked with the synthesized peptide.



Immunohistochemical analysis of paraffin-embedded human brain tumor. 1, Antibody was diluted at 1:200(4° overnight). 2, Tris-EDTA,pH9.0 was used for antigen retrieval. 3,Secondary antibody was diluted at 1:200(room temperature, 45min).

Nanjing BYabs science technology Co.,Ltd

网址: www.njbybio.com

官方热线: 025-5229-8998

监督电话: 15950492658