



SCML2 Polyclonal Antibody

Catalog No	BYab-02226
Isotype	IgG
Reactivity	Human;Rat;Mouse;
Applications	WB; ELISA;IHC
Gene Name	SCML2
Protein Name	Sex comb on midleg-like protein 2
Immunogen	Synthesized peptide derived from the Internal region of human SCML2.
Specificity	SCML2 Polyclonal Antibody detects endogenous levels of SCML2 protein.
Formulation	Liquid in PBS containing 50% glycerol, 0.5% BSA and 0.02% sodium azide.
Source	Polyclonal, Rabbit,IgG
Purification	The antibody was affinity-purified from rabbit antiserum by affinity-chromatography using epitope-specific immunogen.
Dilution	WB 1:500-2000;IHC-p 1:50-300; ELISA 2000-20000
Concentration	1 mg/ml
Purity	≥90%
Storage Stability	-20°C/1 year
Synonyms	SCML2; Sex comb on midleg-like protein 2
Observed Band	77kD
Cell Pathway	Nucleus .
Tissue Specificity	Highly expressed in placenta, thymus and testis. Detected at lower levels in brain, liver, skeletal muscle, pancreas and ovary.
Function	function:Putative Polycomb group (PcG) protein. PcG proteins act by forming multiprotein complexes, which are required to maintain the transcriptionally repressive state of homeotic genes throughout development.,PTM:Phosphorylated upon DNA damage, probably by ATM or ATR.,similarity:Belongs to the SCM family.,similarity:Contains 1 SAM (sterile alpha motif) domain.,similarity:Contains 2 MBT repeats.,tissue specificity:Highly expressed in placenta, thymus and testis. Detected at lower levels in brain, liver, skeletal muscle, pancreas and ovary.,
Background	This gene encodes a member of the Polycomb group proteins. These proteins form the Polycomb repressive complexes which are involved in transcriptional repression. The encoded protein binds histone peptides that are monomethylated

Nanjing BYabscience technology Co.,Ltd



at lysine residues and may be involved in regulating homeotic gene expression during development. [provided by RefSeq, Jun 2010],

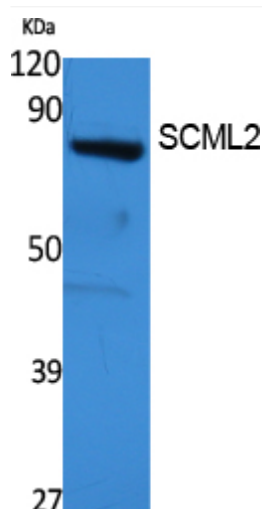
matters needing attention

Avoid repeated freezing and thawing!

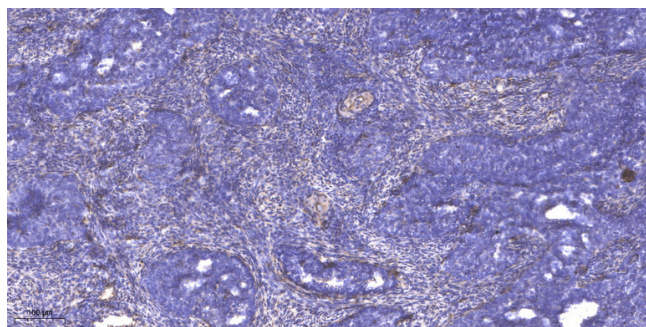
Usage suggestions

This product can be used in immunological reaction related experiments. For more information, please consult technical personnel.

Products Images



Western Blot analysis of extracts from 293 cells, using SCML2 Polyclonal Antibody. Secondary antibody(catalog#:RS0002) was diluted at 1:20000 cells nucleus extracted by Minute TM Cytoplasmic and Nuclear Fractionation kit (SC-003, Invent biotech, MN, USA).



Immunohistochemical analysis of paraffin-embedded human cervical carcinoma. 1, Antibody was diluted at 1:200(4° overnight). 2, Tris-EDTA, pH9.0 was used for antigen retrieval. 3, Secondary antibody was diluted at 1:200(room temperature, 45min).

Nanjing BYabs science technology Co.,Ltd

网址: www.njbybio.com

官方热线: 025-5229-8998

监督电话: 15950492658