



Keratin8/18 mouse mAb

Catalog No	BYab-04506
Isotype	IgG
Reactivity	Human
Applications	WB;ICC
Gene Name	krt8/18
Protein Name	
Immunogen	Recombinant protein corresponding to full length Keratin8 of human.
Specificity	This antibody detects endogenous levels of keratin8/18.
Formulation	Liquid in PBS containing 50% glycerol, 0.5% BSA and 0.02% sodium azide.
Source	Monoclonal, Mouse
Purification	The antibody was affinity-purified from mouse ascites by affinity-chromatography using epitope-specific immunogen.
Dilution	WB 1:500-2000, ICC 1:50-200
Concentration	1 mg/ml
Purity	≥90%
Storage Stability	-20°C/1 year
Synonyms	card2;Cardiac autoantigen 2 120kD;CK 8;CK-8;ck8;Cyk 8;cyk8;CYKER;Cytokeratin 8;Cytokeratin endo A;Cytokeratin-8; Cytokeratin8; DreK8;EndoA; k0;k2c8; K2C8_HUMAN;k8;Keratin 8;Keratin type ii cytoskeletal 8;Keratin, type II cytoskeletal 8;Keratin-8;Keratin8;KO;Krt 2.8;Krt8; krt8;MGC118110;MGC174782;MGC53564;MGC85764;sb:cb186;Type-II keratin Kb8./Cell proliferation inducing gene 46 protein;Cell proliferation inducing protein 46;Cell proliferation-inducing gene 46 protein;CK 18;CK-18;CK18;CYK 18;CYK18;Cytokeratin 18;Cytokeratin endo B;Cytokeratin-18;K 18;K18;K1C18_HUMAN;Keratin 18;Keratin D;keratin, type I cytoskeletal 18;Keratin-18;KRT18.
Observed Band	55/48kD
Cell Pathway	Cytoplasm . Nucleus, nucleoplasm . Nucleus matrix .
Tissue Specificity	Observed in muscle fibers accumulating in the costameres of myoplasm at the sarcolemma membrane in structures that contain dystrophin and spectrin.

Nanjing BYabscience technology Co.,Ltd



Expressed in gingival mucosa and hard palate of the oral cavity.

Function	disease:Defects in KRT8 are a cause of cryptogenic cirrhosis [MIM:215600].,function:Together with KRT19, helps to link the contractile apparatus to dystrophin at the costameres of striated muscle.,miscellaneous:There are two types of cytoskeletal and microfibrillar keratin: I (acidic; 40-55 kDa) and II (neutral to basic; 56-70 kDa).,PTM:O-glycosylated at multiple sites; glycans consist of single N-acetylglucosamine residues.,PTM:Phosphorylation on serine residues is enhanced during EGF stimulation and mitosis. Ser-74 phosphorylation plays an important role in keratin filament reorganization.,similarity:Belongs to the intermediate filament family.,subunit:Heterotetramer of two type I and two type II keratins. keratin-8 associates with keratin-18. Associates with KRT20. Interacts with HCV core protein and PNN. When associated with KRT19, interacts with DMD. Interacts with TCHP.,tissue spec
Background	keratin 8(KRT8) Homo sapiens This gene is a member of the type II keratin family clustered on the long arm of chromosome 12. Type I and type II keratins heteropolymerize to form intermediate-sized filaments in the cytoplasm of epithelial cells. The product of this gene typically dimerizes with keratin 18 to form an intermediate filament in simple single-layered epithelial cells. This protein plays a role in maintaining cellular structural integrity and also functions in signal transduction and cellular differentiation. Mutations in this gene cause cryptogenic cirrhosis. Alternatively spliced transcript variants have been found for this gene. [provided by RefSeq, Jan 2012],
matters needing attention	Avoid repeated freezing and thawing!
Usage suggestions	This product can be used in immunological reaction related experiments. For more information, please consult technical personnel.

Nanjing BYabscience technology Co.,Ltd

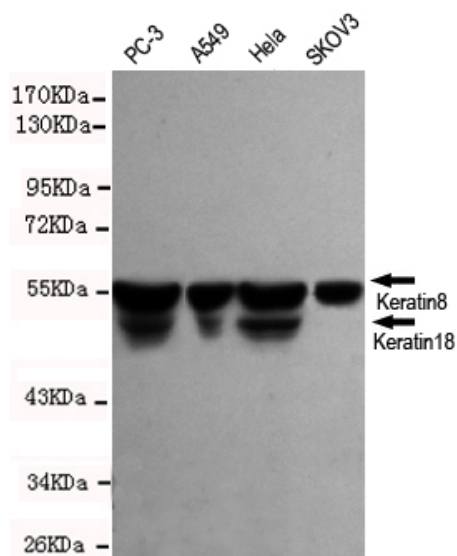
网址: www.njbybio.com

官方热线: 025-5229-8998

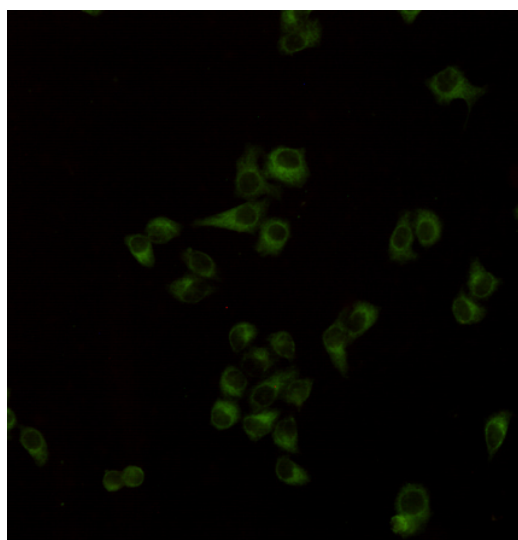
监督电话: 15950492658



Products Images



Western blot detection of keratin8/18 in HeLa, A549, PC-3 and SKOV3 cell lysates using keratin8/18 antibody (1:1000 diluted). Predicted band size: 55KDa. Observed band size: 55KDa.



Immunocytochemistry staining of HeLa cells using anti-keratin8/18 antibody (dilution 1:200).