



## C. Elegans $\alpha$ -tubulin Mouse mAb(Mix-mA)

Catalog No	BYab-04778
Isotype	IgG
Reactivity	C. Elegans;Human;Mouse;Rat
Applications	IHC;WB
Gene Name	C. Elegans $\alpha$ -tubulin
Protein Name	C. Elegans $\alpha$ -tubulin
Immunogen	Synthesized peptide derived from C. Elegans $\alpha$ -tubulin
Specificity	This antibody detects endogenous levels of C. Elegans $\alpha$ -tubulin
Formulation	Liquid in PBS containing 50% glycerol, 0.5% BSA and 0.09% sodium azide.
Source	Monoclonal, Mouse
Purification	The antibody was affinity-purified from mouse ascites by affinity-chromatography using specific immunogen.
Dilution	IHC-p1:100-500 ,WB 1:5000-20000
Concentration	1 mg/ml
Purity	$\geq 90\%$
Storage Stability	-20°C/1 year
Synonyms	
Observed Band	55kD
Cell Pathway	
Tissue Specificity	
Function	
Background	Tubulin is one of several members of a small family of globular proteins. The tubulin superfamily includes five distinct families, the alpha-, beta-, gamma-, delta-, and epsilon-tubulins. The most common members of the tubulin family are $\alpha$ -tubulin and $\beta$ -tubulin, the proteins that make up microtubules. Each has a molecular weight of approximately 55 KD. Microtubules are assembled from dimers of $\alpha$ - and $\beta$ -tubulin.
matters needing attention	Avoid repeated freezing and thawing!

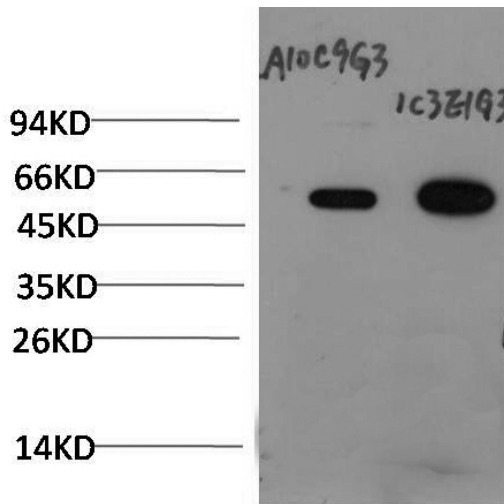
Nanjing BYabscience technology Co.,Ltd



#### Usage suggestions

This product can be used in immunological reaction related experiments. For more information, please consult technical personnel.

#### Products Images



Western blot analysis of C.Elegans whole body Lysate using Mouse mAb diluted at 1:20,000.