



Yeast β -tubulin Mouse mAb(Mix-mA)

Catalog No	BYab-04783
Isotype	IgG
Reactivity	Human; Mouse;Rat
Applications	IHC;WB
Gene Name	Drosophila Melanogaster β -tubulin
Protein Name	Yeast β -tubulin
Immunogen	Synthesized peptide derived from human Yeast β -tubulin
Specificity	This antibody detects endogenous levels of Yeast β -tubulin at Human, Mouse,Rat
Formulation	Liquid in PBS containing 50% glycerol, 0.5% BSA and 0.14% sodium azide.
Source	Monoclonal, Mouse
Purification	The antibody was affinity-purified from mouse ascites by affinity-chromatography using specific immunogen.
Dilution	IHC-p1:50-200 ,WB 1:1000-2000
Concentration	1 mg/ml
Purity	$\geq 90\%$
Storage Stability	-20°C/1 year
Synonyms	
Observed Band	55kD
Cell Pathway	
Tissue Specificity	
Function	
Background	Microtubules are constituent parts of the mitotic apparatus, cilia, flagella, and elements of the cytoskeleton. They consist principally of 2 soluble proteins, alpha- and beta-tubulin, each of about 55,000 Da. Antibodies against beta Tubulin are useful as loading controls for Western Blotting. However it should be noted that levels of β -Tubulin may not be stable in certain cells. For example, expression of β -Tubulin in adipose tissue is very low and therefore β -Tubulin should not be used as loading control for these tissues.

Nanjing BYabs science technology Co.,Ltd



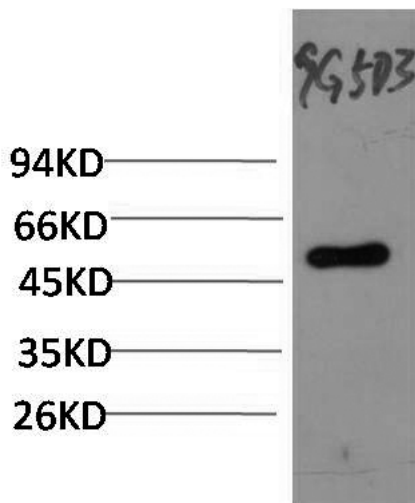
matters needing attention

Avoid repeated freezing and thawing!

Usage suggestions

This product can be used in immunological reaction related experiments. For more information, please consult technical personnel.

Products Images



Western blot analysis of Yeast whole body Lysate using Mouse mAb diluted at 1:10,000.

Nanjing BYabscience technology Co.,Ltd

网址: www.njbybio.com

官方热线: 025-5229-8998

监督电话: 15950492658