



# Rho A Mouse mAb(4E12)

|                    |   |
|--------------------|---|
| Catalog No         | BYab-04809  |
| Isotype            | IgG   |
| Reactivity         | Human; Mouse;Rat  |
| Applications       | IHC;WB  |
| Gene Name          | RHOA ARH12 ARHA RHO12   |
| Protein Name       | Rho A   |
| Immunogen          | Synthesized peptide derived from human Rho A  |
| Specificity        | This antibody detects endogenous levels of Rho A at Human, Mouse,Rat  |
| Formulation        | Liquid in PBS containing 50% glycerol, 0.5% BSA and 0.50% sodium azide.   |
| Source             | Monoclonal, Mouse   |
| Purification       | The antibody was affinity-purified from mouse ascites by affinity-chromatography using specific immunogen.  |
| Dilution           | IHC-p1:50-200 ,WB 1:1000-2000   |
| Concentration      | 1 mg/ml   |
| Purity             | ≥90%  |
| Storage Stability  | -20°C/1 year  |
| Synonyms           | Transforming protein RhoA (Rho cDNA clone 12) (h12)   |
| Observed Band      | 22kD  |
| Cell Pathway       | Cell membrane; Lipid-anchor; Cytoplasmic side. Cytoplasm, cytoskeleton. Cleavage furrow. Cytoplasm, cell cortex . Midbody. Cell projection, lamellipodium . Cell projection, dendrite . Nucleus . Localized to cell-cell contacts in calcium-treated keratinocytes (By similarity). Translocates to the equatorial region before furrow formation in a ECT2-dependent manner. Localizes to the equatorial cell cortex (at the site of the presumptive furrow) in early anaphase in an activated form and in a myosin- and actin-independent manner. . |
| Tissue Specificity | Adipose tissue,Brain,Colon,Mammary cancer,Oesophageal carcinoma,Placenta,Re   |
| Function           | cofactor:Magnesium.,domain:The basic-rich region is essential for yopT recognition and cleavage.,function:Regulates a signal transduction pathway linking plasma membrane receptors to the assembly of focal adhesions and actin stress fibers. Serves as a target for the yopT cysteine peptidase from Yersinia pestis, vector of the plague, and Yersinia pseudotuberculosis, which causes gastrointestinal disorders. May be an activator of PLCE1. Activated by ARHGEF2,  |

Nanjing BYabscience technology Co.,Ltd



which promotes the exchange of GDP for GTP.,PTM: Cleaved by yopT protease when the cell is infected by some Yersinia pathogens. This removes the lipid attachment, and leads to its displacement from plasma membrane and to subsequent cytoskeleton cleavage.,PTM: Substrate for botulinum ADP-ribosyltransferase.,similarity: Belongs to the small GTPase superfamily. Rho family.,subunit: Interacts with RGNEF (By similarity). Binds PRKCL1, ROCK1 and

**Background**

This gene encodes a member of the Rho family of small GTPases, which cycle between inactive GDP-bound and active GTP-bound states and function as molecular switches in signal transduction cascades. Rho proteins promote reorganization of the actin cytoskeleton and regulate cell shape, attachment, and motility. Overexpression of this gene is associated with tumor cell proliferation and metastasis. Multiple alternatively spliced variants have been identified. [provided by RefSeq, Sep 2015],

**matters needing attention**

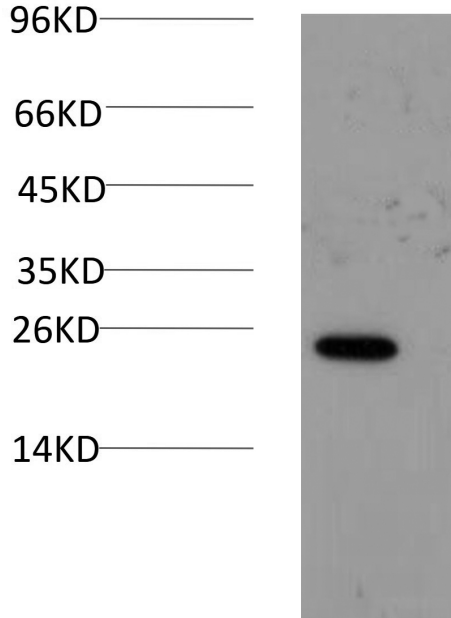
Avoid repeated freezing and thawing!

**Usage suggestions**

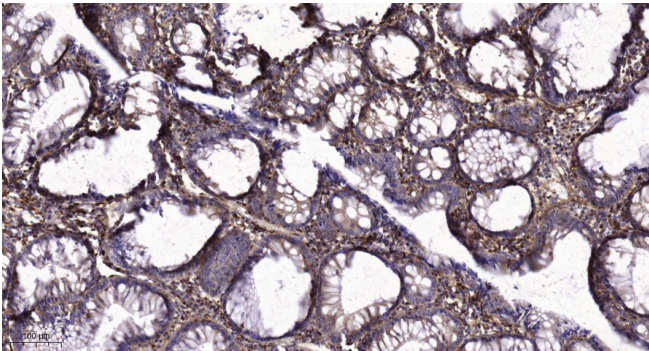
This product can be used in immunological reaction related experiments. For more information, please consult technical personnel.



## Products Images



Western blot analysis of Hela Cell Lysate using RhoAMouse Monoclonal mAb diluted at 1:1,000.



Immunohistochemical analysis of paraffin-embedded human colon cancer. 1, Tris-EDTA, pH9.0 was used for antigen retrieval. 2 Antibody was diluted at 1:200(4° overnight). 3, Secondary antibody was diluted at 1:200(room temperature, 45min).

**Nanjing BYabs science technology Co.,Ltd**

网址: [www.njbybio.com](http://www.njbybio.com)

官方热线: 025-5229-8998

监督电话: 15950492658