



# KIZ Polyclonal Antibody

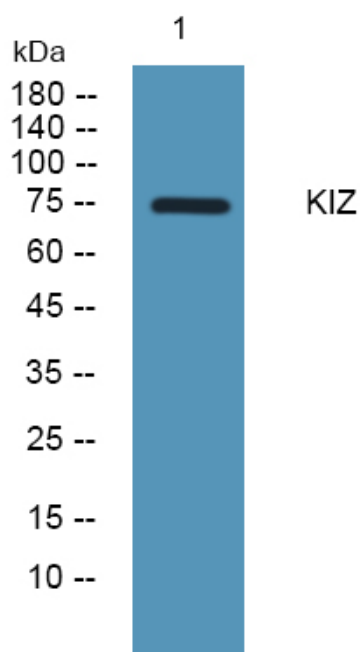
|                    |  |
|--------------------|--|
| Catalog No         | BYab-04913   |
| Isotype            | IgG  |
| Reactivity         | Human;Rat;Mouse;   |
| Applications       | WB;ELISA   |
| Gene Name          | PLK1S1 C20orf19 KIZ NCRNA00153 HT013   |
| Protein Name       | Centrosomal protein kizuna (Polo-like kinase 1 substrate 1)  |
| Immunogen          | Synthesized peptide derived from human protein . at AA range: 320-400  |
| Specificity        | KIZ Polyclonal Antibody detects endogenous levels of protein.  |
| Formulation        | Liquid in PBS containing 50% glycerol, and 0.02% sodium azide.   |
| Source             | Polyclonal, Rabbit,IgG   |
| Purification       | The antibody was affinity-purified from rabbit antiserum by affinity-chromatography using epitope-specific immunogen.  |
| Dilution           | WB 1:500-2000 ELISA 1:5000-20000   |
| Concentration      | 1 mg/ml  |
| Purity             | ≥90%   |
| Storage Stability  | -20°C/1 year   |
| Synonyms           |  |
| Observed Band      | 74kD   |
| Cell Pathway       | Cytoplasm, cytoskeleton, microtubule organizing center, centrosome . Cytoplasm, cytoskeleton, cilium basal body . Localizes to centrosomes throughout the cell cycle. After centrosome duplication, it usually remains associated only with the mother centrosome, containing the older mature centriole and particles surrounding it. During prophase, additional particles accumulate around both separating centrosomes. Does not accumulate at the microtubule minus ends, but instead localizes to the centrosomes and centrosome-surrounding area in a microtubule-independent and dependent manner, respectively. . |
| Tissue Specificity | Uterus,  |
| Function           | microtubule cytoskeleton organization, cytoskeleton organization, microtubule-based process, cell cycle, cell cycle process, microtubule organizing center organization, spindle pole body organization,   |

Nanjing BYabs science technology Co.,Ltd



|                                  |   |
|----------------------------------|---|
| <b>Background</b>                | kizuna centrosomal protein(KIZ) Homo sapiens The protein encoded by this gene localizes to centrosomes, strengthening and stabilizing the pericentriolar region prior to spindle formation. The encoded protein usually remains with the mother centrosome after centrosomal duplication. Sevral transcript variants encoding different isoforms have been found for this gene. [provided by RefSeq, Feb 2013], |
| <b>matters needing attention</b> | Avoid repeated freezing and thawing!  |
| <b>Usage suggestions</b>         | This product can be used in immunological reaction related experiments. For more information, please consult technical personnel.   |

## Products Images



Nanjing BYabscience technology Co.,Ltd

网址: [www.njbybio.com](http://www.njbybio.com)

官方热线: 025-5229-8998

监督电话: 15950492658