



LSM1 Polyclonal Antibody

Catalog No	BYab-04953
Isotype	IgG
Reactivity	Human;Mouse
Applications	WB;ELISA
Gene Name	LSM1 CASM
Protein Name	U6 snRNA-associated Sm-like protein LSm1 (Cancer-associated Sm-like) (Small nuclear ribonuclear CaSm)
Immunogen	Synthesized peptide derived from human protein . at AA range: 50-130
Specificity	LSM1 Polyclonal Antibody detects endogenous levels of protein.
Formulation	Liquid in PBS containing 50% glycerol, and 0.02% sodium azide.
Source	Polyclonal, Rabbit,IgG
Purification	The antibody was affinity-purified from rabbit antiserum by affinity-chromatography using epitope-specific immunogen.
Dilution	WB 1:500-2000 ELISA 1:5000-20000
Concentration	1 mg/ml
Purity	≥90%
Storage Stability	-20°C/1 year
Synonyms	
Observed Band	14kD
Cell Pathway	Cytoplasm . Cytoplasm, P-body .
Tissue Specificity	Eye,Lymph node,
Function	function:Binds specifically to the 3'-terminal U-tract of U6 snRNA.,similarity:Belongs to the snRNP Sm proteins family.,subunit:LSm subunits form a heteromer with a donut shape.,tissue specificity:Has elevated expression in pancreatic cancer and in several cancer-derived cell lines.,
Background	LSM1 homolog, mRNA degradation associated(LSM1) Homo sapiens This gene encodes a member of the LSm family of RNA-binding proteins. LSm proteins form stable heteromers that bind specifically to the 3'-terminal oligo(U) tract of U6 snRNA and may play a role in pre-mRNA splicing by mediating U4/U6 snRNP formation. Increased expression of this gene may play a role in cellular transformation and the progression of several malignancies including lung cancer, mesothelioma and breast cancer. Alternatively spliced transcript variants have

Nanjing BYabscience technology Co.,Ltd



been observed for this gene, and a pseudogene of this gene is located on the short arm of chromosome 9. [provided by RefSeq, Nov 2011],

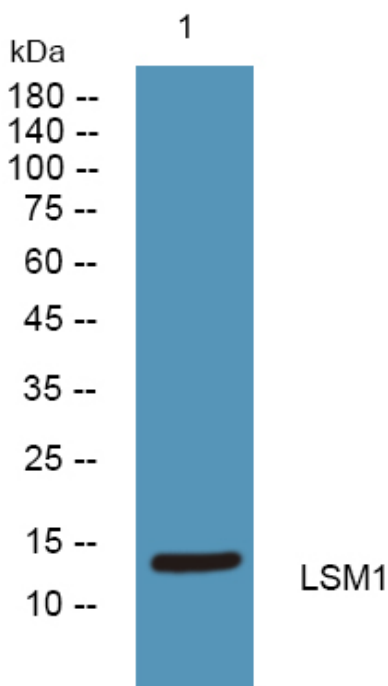
matters needing attention

Avoid repeated freezing and thawing!

Usage suggestions

This product can be used in immunological reaction related experiments. For more information, please consult technical personnel.

Products Images



Western blot analysis of lysates from K562 cells, primary antibody was diluted at 1:1000, 4° over night