



# RT11 Polyclonal Antibody

|                    |   |
|--------------------|---|
| Catalog No         | BYab-04977  |
| Isotype            | IgG   |
| Reactivity         | Human;Rat;Mouse;  |
| Applications       | WB;ELISA  |
| Gene Name          | MRPS11 RPMS11 HCC2  |
| Protein Name       | 28S ribosomal protein S11, mitochondrial (MRP-S11) (S11mt) (Cervical cancer proto-oncogene 2 protein) (HCC-2)   |
| Immunogen          | Synthesized peptide derived from human protein . at AA range: 10-90   |
| Specificity        | RT11 Polyclonal Antibody detects endogenous levels of protein.  |
| Formulation        | Liquid in PBS containing 50% glycerol, and 0.02% sodium azide.  |
| Source             | Polyclonal, Rabbit,IgG  |
| Purification       | The antibody was affinity-purified from rabbit antiserum by affinity-chromatography using epitope-specific immunogen.   |
| Dilution           | WB 1:500-2000 ELISA 1:5000-20000  |
| Concentration      | 1 mg/ml   |
| Purity             | ≥90%  |
| Storage Stability  | -20°C/1 year  |
| Synonyms           |   |
| Observed Band      | 21kD  |
| Cell Pathway       | Mitochondrion .   |
| Tissue Specificity | Cervix,Human lung,Kidney,Muscle,  |
| Function           | alternative products:Experimental confirmation may be lacking for some isoforms,similarity:Belongs to the ribosomal protein S11P family.,subunit:Component of the mitochondrial ribosome small subunit (28S) which comprises a 12S rRNA and about 30 distinct proteins.,  |
| Background         | Mammalian mitochondrial ribosomal proteins are encoded by nuclear genes and help in protein synthesis within the mitochondrion. Mitochondrial ribosomes (mitoribosomes) consist of a small 28S subunit and a large 39S subunit. They have an estimated 75% protein to rRNA composition compared to prokaryotic ribosomes, where this ratio is reversed. Another difference between mammalian mitoribosomes and prokaryotic ribosomes is that the latter contain a 5S rRNA. Among different species, the proteins comprising the mitoribosome differ greatly |

Nanjing BYabscience technology Co.,Ltd



in sequence, and sometimes in biochemical properties, which prevents easy recognition by sequence homology. This gene encodes a 28S subunit protein that contains a high level of sequence similarity with ribosomal protein S11P family members. A pseudogene corresponding to this gene is found on chromosome 20. Multiple transcript variants encoding different

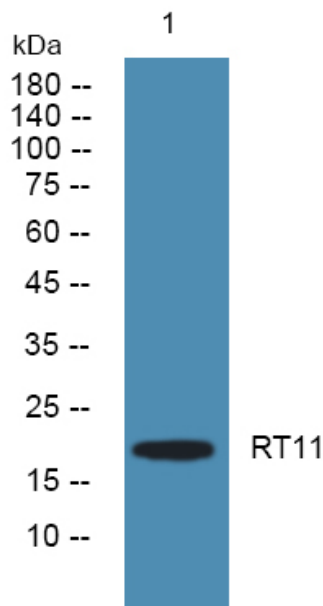
**matters needing attention**

Avoid repeated freezing and thawing!

**Usage suggestions**

This product can be used in immunological reaction related experiments. For more information, please consult technical personnel.

## Products Images



Western blot analysis of lysates from SW480 cells, primary antibody was diluted at 1:1000, 4° over night