



# TPD53 Polyclonal Antibody

Catalog No	BYab-04997
Isotype	IgG
Reactivity	Human;Mouse
Applications	WB;ELISA
Gene Name	TPD52L1
Protein Name	Tumor protein D53 (hD53) (Tumor protein D52-like 1)
Immunogen	Synthesized peptide derived from human protein . at AA range: 30-110
Specificity	TPD53 Polyclonal Antibody detects endogenous levels of protein.
Formulation	Liquid in PBS containing 50% glycerol, and 0.02% sodium azide.
Source	Polyclonal, Rabbit,IgG
Purification	The antibody was affinity-purified from rabbit antiserum by affinity-chromatography using epitope-specific immunogen.
Dilution	WB 1:500-2000 ELISA 1:5000-20000
Concentration	1 mg/ml
Purity	≥90%
Storage Stability	-20°C/1 year
Synonyms	
Observed Band	22kD
Cell Pathway	cytoplasm,perinuclear region of cytoplasm,
Tissue Specificity	Liver,Lung,Mammary carcinoma,Skeletal muscle,
Function	similarity:Belongs to the TPD52 family.,subunit:Forms homodimer or heterodimer with other members of the family.,
Background	This gene encodes a member of a family of proteins that contain coiled-coil domains and may form hetero- or homomers. The encoded protein is involved in cell proliferation and calcium signaling. It also interacts with the mitogen-activated protein kinase kinase kinase 5 (MAP3K5/ASK1) and positively regulates MAP3K5-induced apoptosis. Multiple alternatively spliced transcript variants have been observed. [provided by RefSeq, Jan 2016],
matters needing attention	Avoid repeated freezing and thawing!

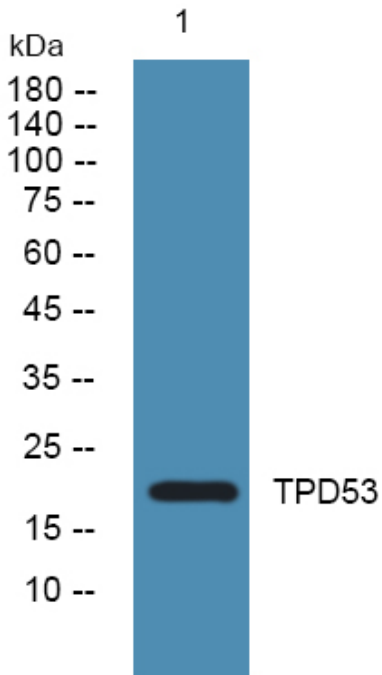
Nanjing BYabscience technology Co.,Ltd



### Usage suggestions

This product can be used in immunological reaction related experiments. For more information, please consult technical personnel.

### Products Images



Western blot analysis of lysates from A431 cells, primary antibody was diluted at 1:1000, 4° over night