



# I10R2 Polyclonal Antibody

Catalog No	BYab-05081
Isotype	IgG
Reactivity	Human;Rat;Mouse;
Applications	WB;ELISA
Gene Name	IL10RB CRFB4 D21S58 D21S66
Protein Name	Interleukin-10 receptor subunit beta (IL-10 receptor subunit beta) (IL-10R subunit beta) (IL-10RB) (Cytokine receptor class-II member 4) (Cytokine receptor family 2 member 4) (CRF2-4) (Interleukin-10
Immunogen	Synthesized peptide derived from human protein . at AA range: 240-320
Specificity	I10R2 Polyclonal Antibody detects endogenous levels of protein.
Formulation	Liquid in PBS containing 50% glycerol, and 0.02% sodium azide.
Source	Polyclonal, Rabbit,IgG
Purification	The antibody was affinity-purified from rabbit antiserum by affinity-chromatography using epitope-specific immunogen.
Dilution	WB 1:500-2000 ELISA 1:5000-20000
Concentration	1 mg/ml
Purity	≥90%
Storage Stability	-20°C/1 year
Synonyms	
Observed Band	35kD
Cell Pathway	Membrane; Single-pass type I membrane protein.
Tissue Specificity	Fetal brain,Kidney,Synovial membrane tissue,
Function	disease:Defects in IL10RB are associated with susceptibility to hepatitis B virus infection (HBV infection) [MIM:610424]. Approximately one third of all cases of cirrhosis and half of all cases of hepatocellular carcinoma can be attributed to chronic HBV infection. HBV infection may result in subclinical or asymptomatic infection, acute self-limited hepatitis, or fulminant hepatitis requiring liver transplantation.,function:Receptor for IL10 and IL22. Serves as an accessory chain essential for the active IL10 receptor complex and to initiate IL10-induced signal transduction events.,similarity:Belongs to the type II cytokine receptor family.,similarity:Contains 2 fibronectin type-III domains.,

Nanjing BYabscience technology Co.,Ltd



## Background

The protein encoded by this gene belongs to the cytokine receptor family. It is an accessory chain essential for the active interleukin 10 receptor complex. Coexpression of this and IL10RA proteins has been shown to be required for IL10-induced signal transduction. This gene and three other interferon receptor genes, IFAR2, IFNAR1, and IFNGR2, form a class II cytokine receptor gene cluster located in a small region on chromosome 21. [provided by RefSeq, Jul 2008],

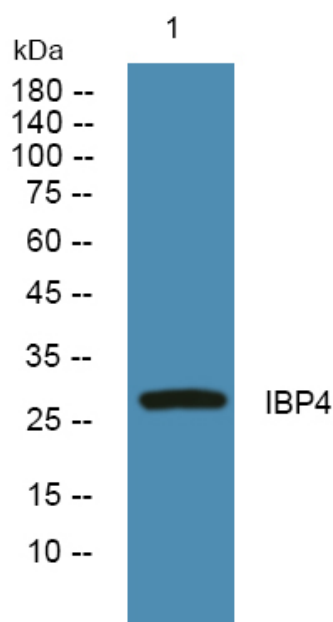
## matters needing attention

Avoid repeated freezing and thawing!

## Usage suggestions

This product can be used in immunological reaction related experiments. For more information, please consult technical personnel.

## Products Images



Western blot analysis of lysates from Jarkat cells, primary antibody was diluted at 1:1000, 4° over night