



# IFI27 Polyclonal Antibody

Catalog No	BYab-05106
Isotype	IgG
Reactivity	Human;Rat;Mouse;
Applications	WB;ELISA
Gene Name	IFI27
Protein Name	Interferon alpha-inducible protein 27, mitochondrial (p27) (Interferon alpha-induced 11.5 kDa protein) (Interferon-stimulated gene 12a protein) (ISG12(a))
Immunogen	Synthesized peptide derived from human protein . at AA range: 1-80
Specificity	IFI27 Polyclonal Antibody detects endogenous levels of protein.
Formulation	Liquid in PBS containing 50% glycerol, and 0.02% sodium azide.
Source	Polyclonal, Rabbit,IgG
Purification	The antibody was affinity-purified from rabbit antiserum by affinity-chromatography using epitope-specific immunogen.
Dilution	WB 1:500-2000 ELISA 1:5000-20000
Concentration	1 mg/ml
Purity	≥90%
Storage Stability	-20°C/1 year
Synonyms	
Observed Band	13kD
Cell Pathway	Mitochondrion membrane ; Multi-pass membrane protein . Nucleus inner membrane ; Multi-pass membrane protein . Endoplasmic reticulum membrane ; Multi-pass membrane protein . Exclusive localizations in either the nucleus or the mitochondrion have been reported. .
Tissue Specificity	Cerebellum,Stomach,Uterus,
Function	induction:By alpha interferons.,similarity:Belongs to the IFI6/IFI27 family.,
Background	induction:By alpha interferons.,similarity:Belongs to the IFI6/IFI27 family.,
matters needing attention	Avoid repeated freezing and thawing!

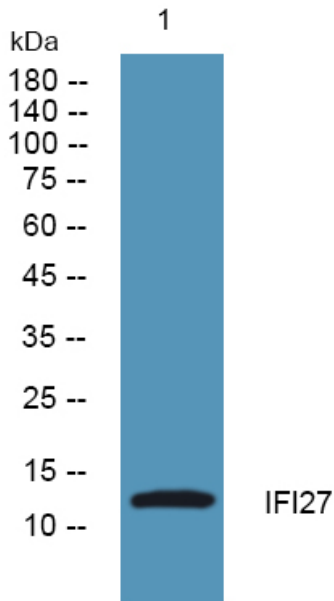
Nanjing BYabscience technology Co.,Ltd



### Usage suggestions

This product can be used in immunological reaction related experiments. For more information, please consult technical personnel.

### Products Images



Western blot analysis of lysates from HCT116 cells, primary antibody was diluted at 1:1000, 4° over night