



WNT9A Polyclonal Antibody

Catalog No	BYab-05164
Isotype	IgG
Reactivity	Human;Mouse
Applications	WB;ELISA
Gene Name	WNT9A WNT14
Protein Name	Protein Wnt-9a (Protein Wnt-14)
Immunogen	Synthesized peptide derived from human protein . at AA range: 120-200
Specificity	WNT9A Polyclonal Antibody detects endogenous levels of protein.
Formulation	Liquid in PBS containing 50% glycerol, and 0.02% sodium azide.
Source	Polyclonal, Rabbit,IgG
Purification	The antibody was affinity-purified from rabbit antiserum by affinity-chromatography using epitope-specific immunogen.
Dilution	WB 1:500-2000 ELISA 1:5000-20000
Concentration	1 mg/ml
Purity	≥90%
Storage Stability	-20°C/1 year
Synonyms	
Observed Band	40kD
Cell Pathway	Secreted, extracellular space, extracellular matrix . Secreted .
Tissue Specificity	
Function	function:Ligand for members of the frizzled family of seven transmembrane receptors. Probable developmental protein. May be a signaling molecule which affects the development of discrete regions of tissues. Is likely to signal over only few cell diameters.,similarity:Belongs to the Wnt family.,
Background	The WNT gene family consists of structurally related genes that encode secreted signaling proteins. These proteins have been implicated in oncogenesis and in several developmental processes, including regulation of cell fate and patterning during embryogenesis. This gene is a member of the WNT gene family. It is expressed in gastric cancer cell lines. The protein encoded by this gene shows 75% amino acid identity to chicken Wnt14, which has been shown to play a central role in initiating synovial joint formation in the chick limb. This gene is

Nanjing BYabscience technology Co.,Ltd



clustered with another family member, WNT3A, in the chromosome 1q42 region. [provided by RefSeq, Jul 2008],

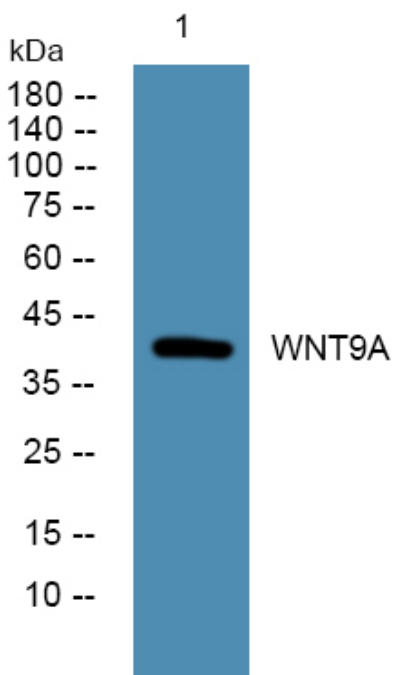
matters needing attention

Avoid repeated freezing and thawing!

Usage suggestions

This product can be used in immunological reaction related experiments. For more information, please consult technical personnel.

Products Images



Western blot analysis of lysates from KB cells, primary antibody was diluted at 1:1000, 4° over night