



RT18B Polyclonal Antibody

Catalog No	BYab-05219
Isotype	IgG
Reactivity	Human;Mouse
Applications	WB;ELISA
Gene Name	MRPS18B C6orf14 HSPC183 PTD017
Protein Name	28S ribosomal protein S18b, mitochondrial (MRP-S18-b) (Mrps18-b) (S18mt-b) (28S ribosomal protein S18-2, mitochondrial) (MRP-S18-2)
Immunogen	Synthesized peptide derived from human protein . at AA range: 30-110
Specificity	RT18B Polyclonal Antibody detects endogenous levels of protein.
Formulation	Liquid in PBS containing 50% glycerol, and 0.02% sodium azide.
Source	Polyclonal, Rabbit,IgG
Purification	The antibody was affinity-purified from rabbit antiserum by affinity-chromatography using epitope-specific immunogen.
Dilution	WB 1:500-2000 ELISA 1:5000-20000
Concentration	1 mg/ml
Purity	≥90%
Storage Stability	-20°C/1 year
Synonyms	
Observed Band	28kD
Cell Pathway	Mitochondrion .
Tissue Specificity	Brain,Heart,Peripheral blood leukocyte,Pituitary tumor,Skeletal mus
Function	similarity:Belongs to the ribosomal protein S18P family.,subunit:Component of the mitochondrial ribosome small subunit (28S) which comprises a 12S rRNA and about 30 distinct proteins.,
Background	Mammalian mitochondrial ribosomal proteins are encoded by nuclear genes and help in protein synthesis within the mitochondrion. Mitochondrial ribosomes (mitoribosomes) consist of a small 28S subunit and a large 39S subunit. They have an estimated 75% protein to rRNA composition compared to prokaryotic ribosomes, where this ratio is reversed. Another difference between mammalian mitoribosomes and prokaryotic ribosomes is that the latter contain a 5S rRNA. Among different species, the proteins comprising the mitoribosome differ greatly in sequence, and sometimes in biochemical properties, which prevents easy

Nanjing BYabscience technology Co.,Ltd



recognition by sequence homology. This gene encodes a 28S subunit protein that belongs to the ribosomal protein S18P family. The encoded protein is one of three that has significant sequence similarity to bacterial S18 proteins. The primary sequences of the three human mitochondria

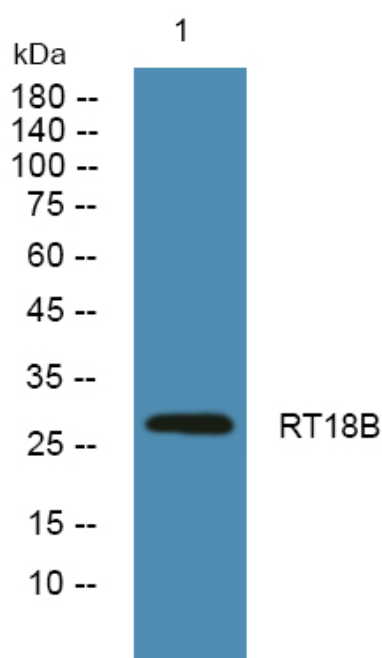
matters needing attention

Avoid repeated freezing and thawing!

Usage suggestions

This product can be used in immunological reaction related experiments. For more information, please consult technical personnel.

Products Images



Western blot analysis of lysates from K562 cells, primary antibody was diluted at 1:1000, 4° over night