



RS3A Polyclonal Antibody

Catalog No	BYab-05242
Isotype	IgG
Reactivity	Human;Mouse;Rat
Applications	WB;ELISA
Gene Name	RPS3A FTE1 MFTL
Protein Name	40S ribosomal protein S3a (v-fos transformation effector protein) (Fte-1)
Immunogen	Synthesized peptide derived from human protein . at AA range: 190-270
Specificity	RS3A Polyclonal Antibody detects endogenous levels of protein.
Formulation	Liquid in PBS containing 50% glycerol, and 0.02% sodium azide.
Source	Polyclonal, Rabbit,IgG
Purification	The antibody was affinity-purified from rabbit antiserum by affinity-chromatography using epitope-specific immunogen.
Dilution	WB 1:500-2000 ELISA 1:5000-20000
Concentration	1 mg/ml
Purity	≥90%
Storage Stability	-20°C/1 year
Synonyms	
Observed Band	29kD
Cell Pathway	Cytoplasm . Nucleus . Localized in cytoplasmic mRNP granules containing untranslated mRNAs.
Tissue Specificity	B-cell,Epithelium,Eye,Liver,Muscle,Ovary,Placenta,Skin,Testis,Uterus,
Function	similarity:Belongs to the ribosomal protein S3Ae family.,subunit:Binds with high affinity to IPO4.,
Background	Ribosomes, the organelles that catalyze protein synthesis, consist of a small 40S subunit and a large 60S subunit. Together these subunits are composed of 4 RNA species and approximately 80 structurally distinct proteins. This gene encodes a ribosomal protein that is a component of the 40S subunit. The protein belongs to the S3AE family of ribosomal proteins. It is located in the cytoplasm. Disruption of the gene encoding rat ribosomal protein S3a, also named v-fos transformation effector protein, in v-fos-transformed rat cells results in reversion of the transformed phenotype. This gene is co-transcribed with the U73A and U73B small nucleolar RNA genes, which are located in its fourth and third introns,

Nanjing BYabscience technology Co.,Ltd



respectively. As is typical for genes encoding ribosomal proteins, there are multiple processed pseudogenes of this gene dispersed through the genome. Alternatively spliced transcript variants have

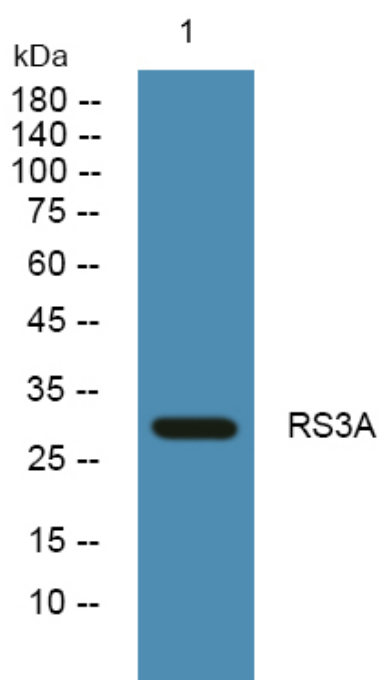
matters needing attention

Avoid repeated freezing and thawing!

Usage suggestions

This product can be used in immunological reaction related experiments. For more information, please consult technical personnel.

Products Images



Western blot analysis of lysates from PC12 cells, primary antibody was diluted at 1:1000, 4° over night