



# RL7A Polyclonal Antibody

Catalog No	BYab-05257
Isotype	IgG
Reactivity	Human;Mouse;Rat
Applications	WB;ELISA
Gene Name	RPL7A SURF-3 SURF3
Protein Name	60S ribosomal protein L7a (PLA-X polypeptide) (Surfeit locus protein 3)
Immunogen	Synthesized peptide derived from human protein . at AA range: 180-260
Specificity	RL7A Polyclonal Antibody detects endogenous levels of protein.
Formulation	Liquid in PBS containing 50% glycerol, and 0.02% sodium azide.
Source	Polyclonal, Rabbit,IgG
Purification	The antibody was affinity-purified from rabbit antiserum by affinity-chromatography using epitope-specific immunogen.
Dilution	WB 1:500-2000 ELISA 1:5000-20000
Concentration	1 mg/ml
Purity	≥90%
Storage Stability	-20°C/1 year
Synonyms	
Observed Band	29kD
Cell Pathway	nucleus,nucleolus,cytoplasm,cytosol,ribosome,cell-cell adherens junction,focal adhesion,membrane,cytosolic large ribosomal subunit,polysomal ribosome,extracellular exosome,
Tissue Specificity	B-cell,Cerebellum,Eye,Lung,Placenta,Pooled,Skin,Uterus,
Function	disease:Chromosomal recombination involving RPL7A activates the receptor kinase domain of the TRK oncogene.,similarity:Belongs to the ribosomal protein L7Ae family.,
Background	Cytoplasmic ribosomes, organelles that catalyze protein synthesis, consist of a small 40S subunit and a large 60S subunit. Together these subunits are composed of 4 RNA species and approximately 80 structurally distinct proteins. This gene encodes a ribosomal protein that is a component of the 60S subunit. The protein belongs to the L7AE family of ribosomal proteins. It can interact with a subclass of nuclear hormone receptors, including thyroid hormone receptor, and inhibit their ability to transactivate by preventing their binding to their DNA

Nanjing BYabscience technology Co.,Ltd



response elements. This gene is included in the surfeit gene cluster, a group of very tightly linked genes that do not share sequence similarity. It is co-transcribed with the U24, U36a, U36b, and U36c small nucleolar RNA genes, which are located in its second, fifth, fourth, and sixth introns, respectively. This gene rearranges with the trk proto-oncogene t

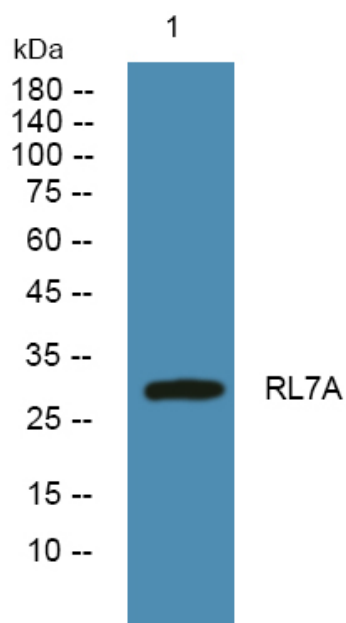
**matters needing attention**

Avoid repeated freezing and thawing!

**Usage suggestions**

This product can be used in immunological reaction related experiments. For more information, please consult technical personnel.

## Products Images



Western blot analysis of lysates from SH-SY5Y cells, primary antibody was diluted at 1:1000, 4° over night