



# A1ATR Polyclonal Antibody

|                    |   |
|--------------------|---|
| Catalog No         | BYab-05307  |
| Isotype            | IgG   |
| Reactivity         | Human;Rat;Mouse;  |
| Applications       | WB;ELISA  |
| Gene Name          | SERPINA2 ARGS ATR PIL   |
| Protein Name       | Putative alpha-1-antitrypsin-related protein (Serin A2)   |
| Immunogen          | Synthesized peptide derived from human protein . at AA range: 110-190   |
| Specificity        | A1ATR Polyclonal Antibody detects endogenous levels of protein.   |
| Formulation        | Liquid in PBS containing 50% glycerol, and 0.02% sodium azide.  |
| Source             | Polyclonal, Rabbit,IgG  |
| Purification       | The antibody was affinity-purified from rabbit antiserum by affinity-chromatography using epitope-specific immunogen.   |
| Dilution           | WB 1:500-2000 ELISA 1:5000-20000  |
| Concentration      | 1 mg/ml   |
| Purity             | ≥90%  |
| Storage Stability  | -20°C/1 year  |
| Synonyms           |   |
| Observed Band      | 46kD  |
| Cell Pathway       | Endoplasmic reticulum .   |
| Tissue Specificity | Expressed in the liver, leukocytes and testis. Also detected in brain, colon, uterus, esophagus, spleen, trachea, kidney and lung.  |
| Function           | caution:Could be the product of a pseudogene.,domain:The reactive center loop (RCL) extends out from the body of the protein and directs binding to the target protease. The protease cleaves the serpin at the reactive site within the RCL, establishing a covalent linkage between the carboxyl group of the serpin reactive site and the serine hydroxyl of the protease. The resulting inactive serpin-protease complex is highly stable.,function:Could be a serine protease inhibitor.,similarity:Belongs to the serpin family., |
| Background         | This gene encodes a member of the serpin family of proteins, a group of proteins that inhibit serine proteases. The encoded intracellular glycoprotein is localized at the endoplasmic reticulum. This gene is a polymorphic pseudogene, with the non-functional allele being predominant in some populations. Some individuals,  |

Nanjing BYabscience technology Co.,Ltd



as represented by the reference genome allele, contain a 2kb coding region deletion and a start code mutation. [provided by RefSeq, Feb 2014],

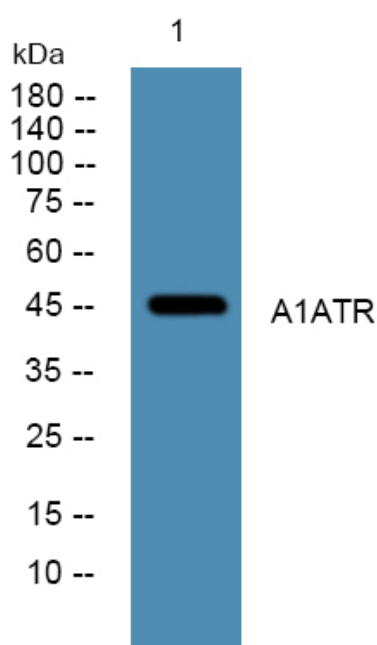
**matters needing attention**

Avoid repeated freezing and thawing!

**Usage suggestions**

This product can be used in immunological reaction related experiments. For more information, please consult technical personnel.

## Products Images



Western blot analysis of lysates from A431 cells, primary antibody was diluted at 1:1000, 4° over night