



ABCBB Polyclonal Antibody

Catalog No	BYab-05381
Isotype	IgG
Reactivity	Human;Rat;Mouse;
Applications	WB;ELISA
Gene Name	ABCB11 BSEP
Protein Name	Bile salt export pump (ATP-binding cassette sub-family B member 11)
Immunogen	Synthesized peptide derived from part region of human protein
Specificity	ABCBB Polyclonal Antibody detects endogenous levels of protein.
Formulation	Liquid in PBS containing 50% glycerol, and 0.02% sodium azide.
Source	Polyclonal, Rabbit,IgG
Purification	The antibody was affinity-purified from rabbit antiserum by affinity-chromatography using epitope-specific immunogen.
Dilution	WB 1:500-2000 ELISA 1:5000-20000
Concentration	1 mg/ml
Purity	≥90%
Storage Stability	-20°C/1 year
Synonyms	
Observed Band	145kD
Cell Pathway	Apical cell membrane ; Multi-pass membrane protein . Recycling endosome membrane ; Multi-pass membrane protein . Endosome . Cell membrane ; Multi-pass membrane protein . Internalized at the canalicular membrane through interaction with the adapter protein complex 2 (AP-2) (PubMed:22262466). At steady state, localizes in the canalicular membrane but is also present in recycling endosomes. ABCB11 constantly and rapidly exchanges between the two sites through tubulo-vesicles carriers that move along microtubules. Microtubule-dependent trafficking of ABCB11 is enhanced by taurocholate and cAMP and regulated by STK11 through a PKA-mediated pathway. Trafficking of newly synthesized ABCB11 through endosomal compartment to the bile canalicular membrane is accelerated by cAMP but not by taurocholat
Tissue Specificity	Expressed predominantly, if not exclusively in the liver, where it was further localized to the canalicular microvilli and to subcanalicular vesicles of the hepatocytes by in situ.
Function	disease:Defects in ABCB11 are the cause of benign recurrent intrahepatic

Nanjing BYabscience technology Co.,Ltd



cholestasis type 2 (BRIC2) [MIM:605479]. BRIC is characterized by intermittent episodes of cholestasis without progression to liver failure. There is initial elevation of serum bile acids, followed by cholestatic jaundice which generally spontaneously resolves after periods of weeks to months. The cholestatic attacks vary in severity and duration and patients are asymptomatic between episodes, both clinically and biochemically. disease: Defects in ABCB11 are the cause of progressive familial intrahepatic cholestasis type 2 (PFIC2) [MIM:601847]. PFIC2 is an inherited liver disease of childhood which is characterized by cholestasis and normal serum gamma-glutamyltransferase activity. Defects in ABCB11 are also found in cases of chronic intrahepatic cholestasis without obvious familial history of chronic liver disease.

Background

The membrane-associated protein encoded by this gene is a member of the superfamily of ATP-binding cassette (ABC) transporters. ABC proteins transport various molecules across extra- and intra-cellular membranes. ABC genes are divided into seven distinct subfamilies (ABC1, MDR/TAP, MRP, ALD, OABP, GCN20, White). This protein is a member of the MDR/TAP subfamily. Members of the MDR/TAP subfamily are involved in multidrug resistance. The protein encoded by this gene is the major canalicular bile salt export pump in man. Mutations in this gene cause a form of progressive familial intrahepatic cholestases which are a group of inherited disorders with severe cholestatic liver disease from early infancy. [provided by RefSeq, Jul 2008],

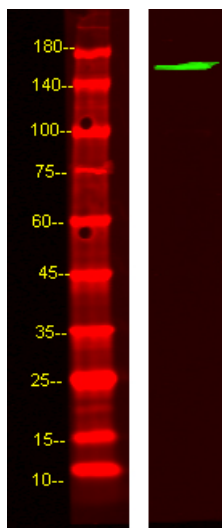
matters needing attention

Avoid repeated freezing and thawing!

Usage suggestions

This product can be used in immunological reaction related experiments. For more information, please consult technical personnel.

Products Images



Western Blot analysis of Hela and mouse brain lysis, using primary antibody at 1:1000 dilution. Secondary antibody(catalog#:RS23920) was diluted at 1:10000