



# CANB2 Polyclonal Antibody

Catalog No	BYab-05389
Isotype	IgG
Reactivity	Human;Rat
Applications	WB;ELISA
Gene Name	PPP3R2 CBLP PPP3RL
Protein Name	Calcineurin subunit B type 2 (Calcineurin B-like protein) (CBLP) (Calcineurin BII) (CNBII) (PPP3R1-like) (Protein phosphatase 2B regulatory subunit 2) (Protein phosphatase 3 regulatory subunit B beta
Immunogen	Synthesized peptide derived from part region of human protein
Specificity	CANB2 Polyclonal Antibody detects endogenous levels of protein.
Formulation	Liquid in PBS containing 50% glycerol, and 0.02% sodium azide.
Source	Polyclonal, Rabbit,IgG
Purification	The antibody was affinity-purified from rabbit antiserum by affinity-chromatography using epitope-specific immunogen.
Dilution	WB 1:500-2000 ELISA 1:5000-20000
Concentration	1 mg/ml
Purity	≥90%
Storage Stability	-20°C/1 year
Synonyms	
Observed Band	18kD
Cell Pathway	Mitochondrion . Localizes in the mitochondria in a SPATA33-dependent manner. .
Tissue Specificity	Testis-specific.
Function	function:Regulatory subunit of calcineurin, a calcium-dependent, calmodulin stimulated protein phosphatase. Confers calcium sensitivity.,miscellaneous:This protein has four functional calcium-binding sites.,similarity:Belongs to the calcineurin regulatory subunit family.,similarity:Contains 4 EF-hand domains.,subunit:Composed of a catalytic subunit (A) and a regulatory subunit (B).,tissue specificity:Testis specific.,
Background	function:Regulatory subunit of calcineurin, a calcium-dependent, calmodulin stimulated protein phosphatase. Confers calcium sensitivity.,miscellaneous:This protein has four functional calcium-binding sites.,similarity:Belongs to the calcineurin regulatory subunit family.,similarity:Contains 4 EF-hand

Nanjing BYabscience technology Co.,Ltd



domains.,subunit:Composed of a catalytic subunit (A) and a regulatory subunit (B).,tissue specificity:Testis specific.,

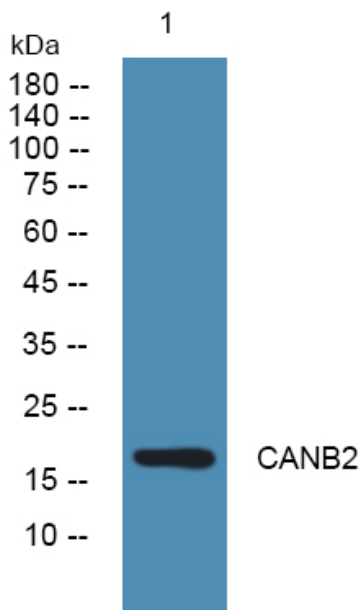
**matters needing attention**

Avoid repeated freezing and thawing!

**Usage suggestions**

This product can be used in immunological reaction related experiments. For more information, please consult technical personnel.

## Products Images



Western blot analysis of lysates from KB cells, primary antibody was diluted at 1:1000, 4°over night