



CP250 Polyclonal Antibody

Catalog No	BYab-05453
Isotype	IgG
Reactivity	Human;Rat;Mouse;
Applications	IHC;IF
Gene Name	CEP250 CEP2 CNAP1
Protein Name	Centrosome-associated protein CEP250 (250 kDa centrosomal protein) (Cep250) (Centrosomal Nek2-associated protein 1) (C-Nap1) (Centrosomal protein 2)
Immunogen	Synthesized peptide derived from part region of human protein
Specificity	CP250 Polyclonal Antibody detects endogenous levels of protein.
Formulation	Liquid in PBS containing 50% glycerol, and 0.02% sodium azide.
Source	Polyclonal, Rabbit,IgG
Purification	The antibody was affinity-purified from rabbit antiserum by affinity-chromatography using epitope-specific immunogen.
Dilution	IHC-p 1:50-300. IF 1:50-200
Concentration	1 mg/ml
Purity	≥90%
Storage Stability	-20°C/1 year
Synonyms	
Observed Band	268kD
Cell Pathway	Cytoplasm, perinuclear region . Cytoplasm, cytoskeleton, microtubule organizing center, centrosome, centriole . Cytoplasm, cytoskeleton, microtubule organizing center, centrosome . Cytoplasm, cytoskeleton, cilium basal body . Cell projection, cilium, photoreceptor outer segment . Photoreceptor inner segment . Component of the core centrosome. In interphase cells, it specifically associates with the proximal ends of both mother and daughter centrioles. Associates with the centrosome in interphase cells. In mitotic cells, it dissociates from the mitotic spindle poles. At the end of cell division, it reaccumulates at centrosomes.
Tissue Specificity	Ubiquitously and weakly expressed.
Function	disease:Antibodies against CEP2 are present in sera from patients with autoimmune diseases that developed autoantibodies against centrosomal proteins.,function:Probably plays an important role in centrosome cohesion during interphase.,PTM:Differentially phosphorylated during cell cycle. Phosphorylation may regulate association/dissociation from centrosome. During M phase of

Nanjing BYabscience technology Co.,Ltd



mitosis, C-terminal part is phosphorylated by NEK2, suggesting that it may trigger the dissociation from the mitotic centrosome. Dephosphorylated in vitro by the PP1 phosphatase.,subcellular location:Component of the core centrosome. In interphase cells, it specifically associates with the proximal ends of both mother and daughter centrioles. Associates with the centrosome in interphase cells. In mitotic cells, it dissociates from the mitotic spindle poles. At the end of cell division, it reaccumulates at centrosomes.

Background

centrosomal protein 250(CEP250) Homo sapiens This gene encodes a core centrosomal protein required for centriole-centriole cohesion during interphase of the cell cycle. The encoded protein dissociates from the centrosomes when parental centrioles separate at the beginning of mitosis. The protein associates with and is phosphorylated by NIMA-related kinase 2, which is also associated with the centrosome. Alternative splicing results in multiple transcript variants encoding different isoforms. [provided by RefSeq, Dec 2015],

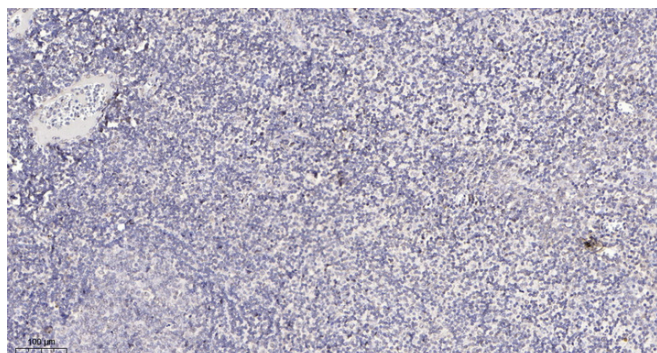
matters needing attention

Avoid repeated freezing and thawing!

Usage suggestions

This product can be used in immunological reaction related experiments. For more information, please consult technical personnel.

Products Images



Immunohistochemical analysis of paraffin-embedded human tonsil. 1, Antibody was diluted at 1:200(4° overnight). 2, Tris-EDTA,pH9.0 was used for antigen retrieval. 3,Secondary antibody was diluted at 1:200(room temperature, 30min).

Nanjing BYabscience technology Co.,Ltd

网址: www.njbybio.com

官方热线: 025-5229-8998

监督电话: 15950492658