



CDR1 Polyclonal Antibody

Catalog No	BYab-05454
Isotype	IgG
Reactivity	Human;Rat;Mouse;
Applications	WB;ELISA
Gene Name	CDR1
Protein Name	Cerebellar degeneration-related antigen 1 (CDR34)
Immunogen	Synthesized peptide derived from part region of human protein
Specificity	CDR1 Polyclonal Antibody detects endogenous levels of protein.
Formulation	Liquid in PBS containing 50% glycerol, and 0.02% sodium azide.
Source	Polyclonal, Rabbit,IgG
Purification	The antibody was affinity-purified from rabbit antiserum by affinity-chromatography using epitope-specific immunogen.
Dilution	WB 1:500-2000 ELISA 1:5000-20000
Concentration	1 mg/ml
Purity	≥90%
Storage Stability	-20°C/1 year
Synonyms	
Observed Band	28kD
Cell Pathway	
Tissue Specificity	Brain; predominantly expressed in normal neuroectodermal tissues and in certain malignant tumors.
Function	disease:CDR1 is one of the target molecules recognized by autoantibodies in patients with paraneoplastic cerebellar degeneration.,sequence caution:Frameshifts in positions 134, 176.,tissue specificity:Brain; predominantly expressed in normal neuroectodermal tissues and in certain malignant tumors.,
Background	cerebellar degeneration related protein 1(CDR1) Homo sapiens Autoantibodies directed against the protein encoded by this intronless gene have been found in some patients with paraneoplastic cerebellar degeneration. The encoded protein contains several hexapeptide repeats. [provided by RefSeq, Jan 2010],

Nanjing BYabscience technology Co.,Ltd

网址: www.njbybio.com

官方热线: 025-5229-8998

监督电话: 15950492658



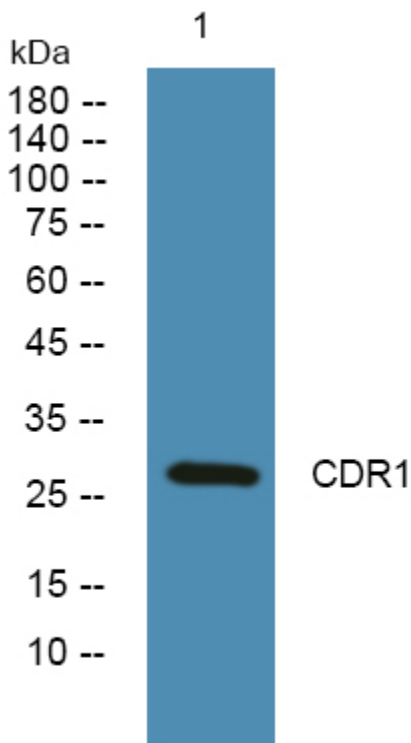
matters needing attention

Avoid repeated freezing and thawing!

Usage suggestions

This product can be used in immunological reaction related experiments. For more information, please consult technical personnel.

Products Images



Nanjing BYabs science technology Co.,Ltd

网址: www.njbybio.com

官方热线: 025-5229-8998

监督电话: 15950492658