



RPAC2 Polyclonal Antibody

Catalog No	BYab-05540
Isotype	IgG
Reactivity	Human;Rat;Mouse;
Applications	WB;ELISA
Gene Name	POLR1D
Protein Name	DNA-directed RNA polymerases I and III subunit RPAC2 (RNA polymerases I and III subunit AC2) (AC19) (DNA-directed RNA polymerase I subunit D) (RNA polymerase I 16 kDa subunit) (RPA16) (RPC16) (hRPA19)
Immunogen	Synthesized peptide derived from part region of human protein
Specificity	RPAC2 Polyclonal Antibody detects endogenous levels of protein.
Formulation	Liquid in PBS containing 50% glycerol, and 0.02% sodium azide.
Source	Polyclonal, Rabbit,IgG
Purification	The antibody was affinity-purified from rabbit antiserum by affinity-chromatography using epitope-specific immunogen.
Dilution	WB 1:500-2000 ELISA 1:5000-20000
Concentration	1 mg/ml
Purity	≥90%
Storage Stability	-20°C/1 year
Synonyms	
Observed Band	14kD
Cell Pathway	nucleoplasm,DNA-directed RNA polymerase III complex,DNA-directed RNA polymerase I complex,cytosol,
Tissue Specificity	Cerebellum,Cervix,Colon,Eye,Kidney,Ovarian carcinoma,
Function	function:DNA-dependent RNA polymerase catalyzes the transcription of DNA into RNA using the four ribonucleoside triphosphates as substrates. Common core component of RNA polymerases I and III which synthesize ribosomal RNA precursors and small RNAs, such as 5S rRNA and tRNAs, respectively.,similarity:Belongs to the archaeal rpoL/eukaryotic RPB11/RPC19 RNA polymerase subunit family.,subunit:Component of the RNA polymerase I (Pol I) and RNA polymerase III (Pol III) complexes consisting of at least 13 and 17 subunits, respectively.,
Background	The protein encoded by this gene is a component of the RNA polymerase I and RNA polymerase III complexes, which function in the synthesis of ribosomal RNA

Nanjing BYabscience technology Co.,Ltd



precursors and small RNAs, respectively. Mutations in this gene are a cause of Treacher Collins syndrome (TCS), a craniofacial development disorder. Alternative splicing results in multiple transcript variants. [provided by RefSeq, Apr 2011],

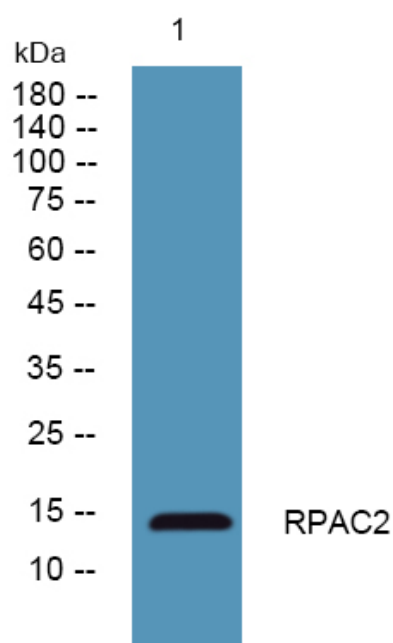
matters needing attention

Avoid repeated freezing and thawing!

Usage suggestions

This product can be used in immunological reaction related experiments. For more information, please consult technical personnel.

Products Images



Western blot analysis of lysates from SH-SY5Y cells, primary antibody was diluted at 1:1000, 4° over night