



# MARH8 Polyclonal Antibody

<b>Catalog No</b>	BYab-05556
<b>Isotype</b>	IgG
<b>Reactivity</b>	Human;Rat;Mouse;
<b>Applications</b>	WB;ELISA
<b>Gene Name</b>	MARCH8 MIR RNF178
<b>Protein Name</b>	E3 ubiquitin-protein ligase MARCH8 (EC 6.3.2.-) (Cellular modulator of immune recognition) (c-MIR) (Membrane-associated RING finger protein 8) (Membrane-associated RING-CH protein VIII) (MARCH-VIII) (
<b>Immunogen</b>	Synthesized peptide derived from part region of human protein
<b>Specificity</b>	MARH8 Polyclonal Antibody detects endogenous levels of protein.
<b>Formulation</b>	Liquid in PBS containing 50% glycerol, and 0.02% sodium azide.
<b>Source</b>	Polyclonal, Rabbit,IgG
<b>Purification</b>	The antibody was affinity-purified from rabbit antiserum by affinity-chromatography using epitope-specific immunogen.
<b>Dilution</b>	WB 1:500-2000 ELISA 1:5000-20000
<b>Concentration</b>	1 mg/ml
<b>Purity</b>	≥90%
<b>Storage Stability</b>	-20°C/1 year
<b>Synonyms</b>	
<b>Observed Band</b>	32kD
<b>Cell Pathway</b>	Cytoplasmic vesicle membrane ; Multi-pass membrane protein . Lysosome membrane ; Multi-pass membrane protein . Early endosome membrane ; Multi-pass membrane protein .
<b>Tissue Specificity</b>	Broadly expressed. Present in immature dendritic cells (at protein level).
<b>Function</b>	domain:The RING-CH-type zinc finger domain is required for E3 ligase activity.,function:E3 ubiquitin-protein ligase that may regulate immune responses by promoting ubiquitination of MHC-II and CD86, which leads to their subsequent endocytosis and lysosomal degradation. May also promote ubiquitination and endocytosis of TFRC and FAS. E3 ubiquitin ligases accept ubiquitin from an E2 ubiquitin-conjugating enzyme in the form of a thioester and then directly transfer the ubiquitin to targeted substrates.,pathway:Protein modification; protein ubiquitination.,similarity:Contains 1 RING-CH-type zinc finger.,subunit:Interacts with CD86.,tissue specificity:Broadly expressed. Present in immature dendritic

**Nanjing BYabs science technology Co.,Ltd**



cells (at protein level).,

#### Background

MARCH8 is a member of the MARCH family of membrane-bound E3 ubiquitin ligases (EC 6.3.2.19). MARCH enzymes add ubiquitin (see MIM 191339) to target lysines in substrate proteins, thereby signaling their vesicular transport between membrane compartments. MARCH8 induces the internalization of several membrane glycoproteins (Goto et al., 2003 [PubMed 12582153]; Bartee et al., 2004 [PubMed 14722266]).[supplied by OMIM, Apr 2010],

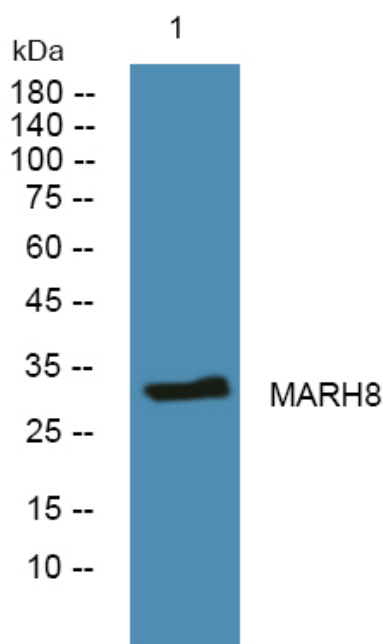
#### matters needing attention

Avoid repeated freezing and thawing!

#### Usage suggestions

This product can be used in immunological reaction related experiments. For more information, please consult technical personnel.

### Products Images



Western blot analysis of lysates from SW480 cells, primary antibody was diluted at 1:1000, 4° over night